

TORINO 51" LED

Architectural Indoor



PROJECT:	
TYPE:	
PO#:	QTY:
COMMENTS:	

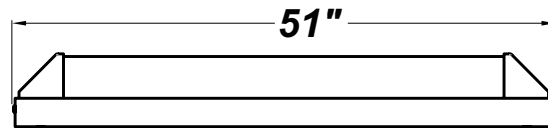
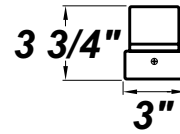
FEATURES

- ADA Compliant
- CSA Listed Damp Location For Wall And Ceiling Mount
- Integral EB Available
- Mounts Directly to Wall or Ceiling
- Steel Housing & End Caps w/ Matte Silver Powder Coat Finish
- Steel Reflector Plate w/ Powder Coat Finish
- White Acrylic Lense



LINE DRAWING

LINE DRAWING NOT TO SCALE



FINISHES

Antique Copper



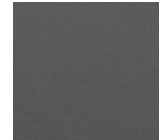
Antique Silver



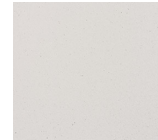
Bronze Mist



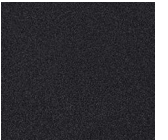
Matte Silver



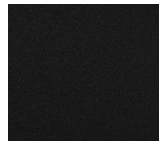
Sand



Swedish Steel



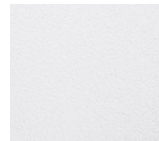
Textured Black



Textured Bronze



Textured White



For RAL Colors & Custom Match - Contact Teron Lighting Inc.

TORINO 51" LED

Architectural Indoor



Fixture Core

PROJECT:	
TYPE:	
PO#:	QTY:
COMMENTS:	

PRODUCT CODE	SOURCE/WATTAGE	VOLTAGE	DIMMING DRIVER
TN048 - Torino 51" LED	L38.3-ZE1050 - 42W @ 1050mA 4-Wire Dimming Driver (Dimmable 0 - 10V) L34.7-TE950 - 40W @ 950mA (ELV Dimming on 120-277V Only)	120-277V (50 / 60Hz) 347V	ZE - 0 - 10V Dimming TE - Trailing Edge Dimming
ORDER INFO			
TN048 Example ^	L38.3-ZE1050	120-277V	ZE

Aesthetics & Options

TRIM	FINISH	COLOR TEMP	OPTIONS
TWC - Twin Curves	WH - White AC - Antique Copper AS - Antique Silver BT - Bronze Mist SM - Matte Silver (Standard) SN - Sand SW - Swedish Steel TB - Textured Black BZ - Textured Bronze TW - Textured White	30K - 3000K Color Temp 35K - 3500K Color Temp 40K - 4000K Color Temp 50K - 5000K Color Temp	F - Fused EB - Emergency Backup (On 120-277V Only) JBC - Junction Box Cover TP - Tamper Resistant Screws TWC - Twin Curves Cover
ORDER INFO			
TWC Example ^	WH	30K	F

PROD	SOURCE	30K SPECS			
TN048	L38.3	<ul style="list-style-type: none"> 30K - 3000K Color Temp 2981 LED Delivered Lumens 66 LED Delivered Lumens Per Watt 			

REPLACEMENT PART	PART NO	NOTES
White 4' Acrylic Diffuser	3032060	
		Don't see the configuration you are looking for? Call us today at (513) 858-6004



TERONLIGHTING.COM
33 DONALD DR, FAIRFIELD, OH 45014
P: 513.858.6004 F: 513.858.6038
E: SALES@TERONLIGHT.COM



We reserve the right to revise the design components of any product due to parts availability or change in UL standards, without assuming any obligation or liability to modify any products previously manufactured, and without notice.