

ORION MSE LED 46"

Architectural Indoor



PROJECT:	
TYPE:	
PO#:	QTY:
COMMENTS:	

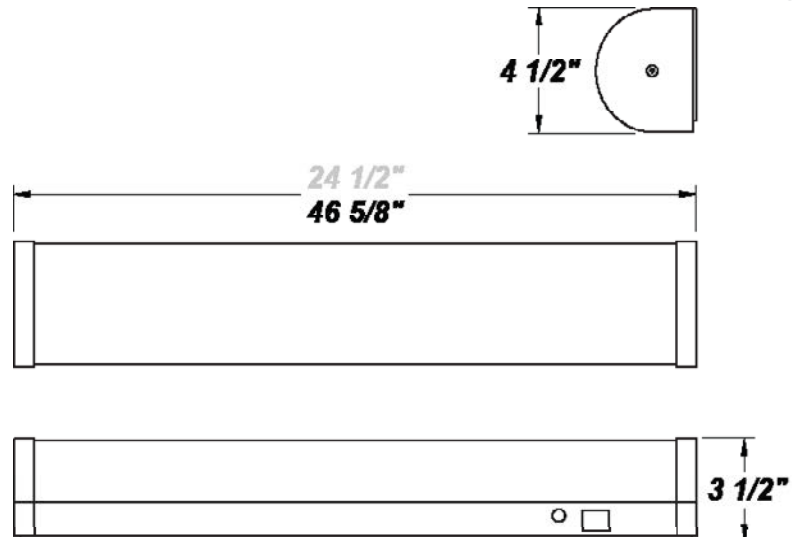
FEATURES

- ADA Compliant
- CSA Dry Location For Wall or Ceiling Mount
- Emergency Battery Available
- [External Motion Sensor](#)
- LED Light Fixture
- Luminous White Acrylic Diffuser
- Mounts Directly to Surface w/ 2 Wall Anchors (Not Included)
- Steel Mount Pan & End Caps w/ White Powder Coat Finish



LINE DRAWING

LINE DRAWING NOT TO SCALE

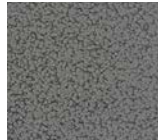


FINISHES

Antique Copper



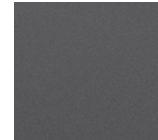
Antique Silver



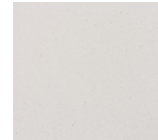
Bronze Mist



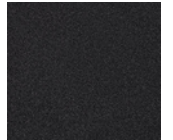
Matte Silver



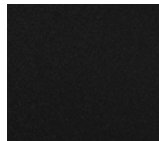
Sand



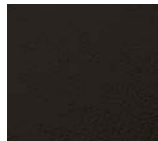
Swedish Steel



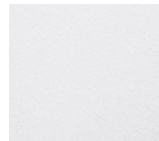
Textured Black



Textured Bronze



Textured White



For RAL Colors & Custom Match - Contact Teron Lighting Inc.

ORION MSE LED 46"

Architectural Indoor



Fixture Core

PROJECT:	
TYPE:	
PO#:	QTY:
COMMENTS:	

PRODUCT CODE	SOURCE/WATTAGE	VOLTAGE	DIMMING DRIVER
ORN48 - Orion 46"	L32.0-ZE1100 - (1) 32.0W (44) LED Strip @ 1100mA 0-10V Dimming Driver L37.0-LT1300 - (1) 37.0W (44) LED Strip @ 1300mA ELV Dimming Driver	120-277V (50 / 60Hz)	Not Applicable
ORDER INFO			
ORN48 Example ^	L32.0-ZE1100	120-277V	Not Applicable

Aesthetics & Options

TRIM	FINISH	COLOR TEMP	OPTIONS
MSE - WattStopper FS-205 External Motion Sensor	AC - Antique Copper TB - Textured Black AS - Antique Silver TW - Textured White (Standard) BT - Bronze Mist BZ - Textured Bronze SN - Sand SM - Matte Silver SW - Swedish Steel	30K - 3000K Color Temp 35K - 3500K Color Temp 40K - 4000K Color Temp 50K - 5000K Color Temp	EB - Integral Emergency Battery
ORDER INFO			
MSE Example ^	AC	30K	EB

PROD	SOURCE	30K SPECS			
ORN48	L32.0	<ul style="list-style-type: none"> 80 CRI Typ 30K - 3000K Color Temp 3917 LED Source Lumens 122.4 LED Source Lumens Per Watt 			
	L37.0	<ul style="list-style-type: none"> 30K - 3000K Color Temp 4487 LED Source Lumens 121.3 LED Source Lumens Per Watt 			

REPLACEMENT PART	PART NO	NOTES
White Acrylic Lens	3058160	
		Don't see the configuration you are looking for? Call us today at (513) 858-6004



TERONLIGHTING.COM
 33 DONALD DR, FAIRFIELD, OH 45014
 P: 513.858.6004 F: 513.858.6038
 E: SALES@TERONLIGHT.COM



We reserve the right to revise the design components of any product due to parts availability or change in UL standards, without assuming any obligation or liability to modify any products previously manufactured, and without notice.