

ORION MSE LED 24"

Architectural Indoor



PROJECT:	
TYPE:	
PO#:	QTY:
COMMENTS:	

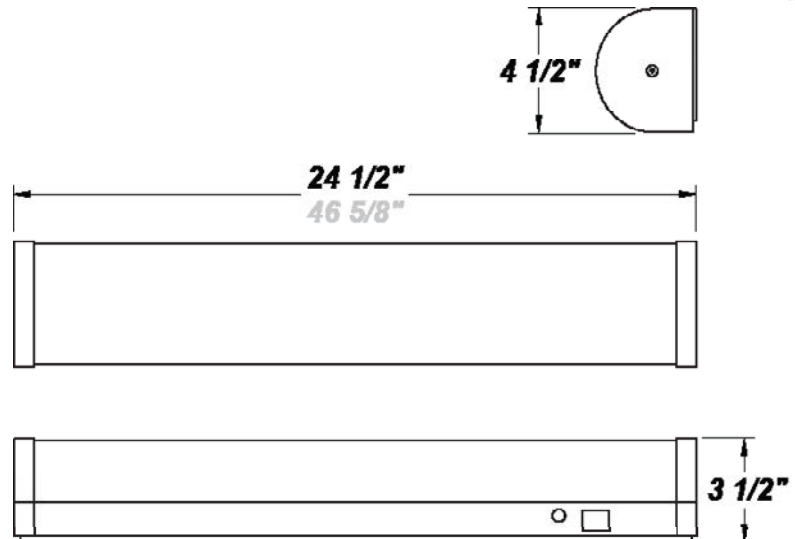
FEATURES

- ADA Compliant
- CSA Dry Location For Wall or Ceiling Mount
- [External Motion Sensor](#)
- LED Light Fixture
- Luminous White Acrylic Diffuser
- Mounts Directly to Surface w/ 2 Wall Anchors (Not Included)
- Steel Mount Pan & End Caps w/ White Powder Coat Finish



LINE DRAWING

LINE DRAWING NOT TO SCALE

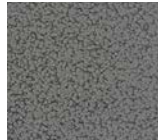


FINISHES

Antique Copper



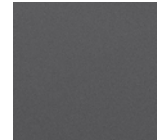
Antique Silver



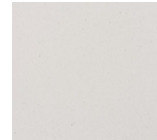
Bronze Mist



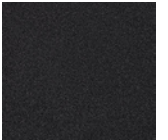
Matte Silver



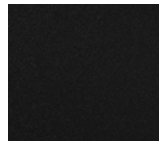
Sand



Swedish Steel



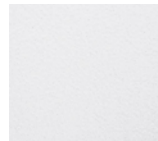
Textured Black



Textured Bronze



Textured White



For RAL Colors & Custom Match - Contact Teron Lighting Inc.

ORION MSE LED 24"

Architectural Indoor



Fixture Core

PROJECT:	
TYPE:	
PO#:	QTY:
COMMENTS:	

PRODUCT CODE	SOURCE/WATTAGE	VOLTAGE	DIMMING DRIVER
ORN24 - Orion 24"	L14.0-LT500 - (1) 14.0W (22) LED Strip @ 500mA ELV Dimming Driver L17.0-ZE600 - (1) 17.0W (22) LED Strip @ 600mA 0-10V Dimming Driver L20.0-ZE700 - (1) 20.0W (22) LED Strip @ 700mA 0-10V Dimming Driver	120-277V (50 / 60Hz)	Not Applicable
ORDER INFO			
ORN24 Example ^	L14.0-LT500	120-277V	Not Applicable

Aesthetics & Options

TRIM	FINISH	COLOR TEMP	OPTIONS
MSE - WattStopper FS-205 External Motion Sensor	AC - Antique Copper TB - Textured Black AS - Antique Silver BT - Bronze Mist TW - Textured White (Standard) BZ - Textured Bronze SN - Sand SM - Matte Silver SW - Swedish Steel	30K - 3000K Color Temp 35K - 3500K Color Temp 40K - 4000K Color Temp	Not Applicable
ORDER INFO			
MSE Example ^	AC	30K	Not Applicable

PROD	SOURCE	30K SPECS				
ORN24	L14.0	<ul style="list-style-type: none"> 80 CRI Typ 30K - 3000K Color Temp 1806 LED Source Lumens 129 LED Source Lumens Per Watt 				
	L17.0	<ul style="list-style-type: none"> 80 CRI Typ 30K - 3000K Color Temp 2102 LED Source Lumens 123.6 LED Source Lumens Per Watt 				
	L20.0	<ul style="list-style-type: none"> 30K - 3000K Color Temp 2402 LED Source Lumens 123.6 LED Source Lumens Per Watt 				

REPLACEMENT PART	PART NO	NOTES
White Acrylic Lens	3058060	
		Don't see the configuration you are looking for? Call us today at (513) 858-6004



TERONLIGHTING.COM
 33 DONALD DR, FAIRFIELD, OH 45014
 P: 513.858.6004 F: 513.858.6038
 E: SALES@TERONLIGHT.COM



We reserve the right to revise the design components of any product due to parts availability or change in UL standards, without assuming any obligation or liability to modify any products previously manufactured, and without notice.