

INVECTA BFP LED 48"

Architectural Indoor



PROJECT:	
TYPE:	
PO#:	QTY:
COMMENTS:	

FEATURES

- Steel Housing w/ Brushed Nickel Powder Coated Finish
- White Acrylic Diffuser
- ETL/cETL Listed Dry Location
- Energy Star
- Mounts Directly to Surface w/ Two Wall Anchors
- Mounting Hardware Included
- Dry Location For Surface Mount
- LED Light Fixture



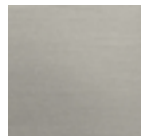
LINE DRAWING

LINE DRAWING NOT TO SCALE



FINISHES

Brushed Nickel



INVECTA BFP LED 48"

Architectural Indoor



Fixture Core

PROJECT:	
TYPE:	
PO#:	QTY:
COMMENTS:	

PRODUCT CODE	SOURCE/WATTAGE	VOLTAGE	DIMMING DRIVER
INV48 - Invecta 48"	L38.0-1050 - (1) 36W @ 1050mA	120V 120 - 277V	Not Applicable
ORDER INFO			
INV48 Example ^	L38.0-1050	120V	Not Applicable

Aesthetics & Options

TRIM	FINISH	COLOR TEMP	OPTIONS
Not Applicable	BN - Brushed Nickel (Standard)	30K - 3000K Color Temp. 40K - 4000K Color Temp.	Not Applicable
ORDER INFO			
Not Applicable Example ^	BN	30K	Not Applicable

PROD	SOURCE	30K SPECS				
INV48	L38	<ul style="list-style-type: none"> 30K - 3000K Color Temp 3221 LED Delivered Lumens 90 LED Delivered Lumens Per Watt 				

REPLACEMENT PART	PART NO	NOTES
		L70 >35,000 hrs Minimum Starting Temperature = -20 Degrees C



TERONLIGHTING.COM
 33 DONALD DR, FAIRFIELD, OH 45014
 P: 513.858.6004 F: 513.858.6038
 E: SALES@TERONLIGHT.COM

We reserve the right to revise the design components of any product due to parts availability or change in UL standards, without assuming any obligation or liability to modify any products previously manufactured, and without notice.