

CAPRI LED CPT 36"

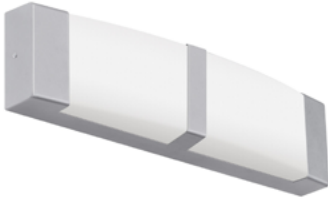
Architectural Indoor



PROJECT:	
TYPE:	
PO#:	QTY:
COMMENTS:	

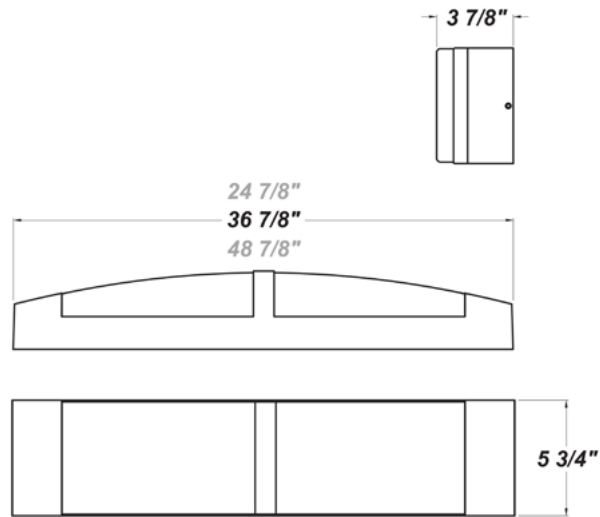
FEATURES

- ADA Compliant
- CSA Listed Damp Location For Wall or Ceiling Mounting
- L38.0 is Dimmable at 120V Only
- LED Light Fixture
- Luminous White Acrylic Diffuser
- Mounts Directly to Surface w/ Two Wall Anchors (Not Included)
- Steel Housing w/ Matte Silver Powder Coat Finish
- Steel Mounting Pan w/ Hi-Reflectance White Powder Coat Finish
- Steel Reflector w/ Hi-Reflectance White Powder Coat Finish



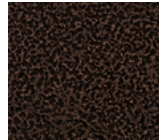
LINE DRAWING

LINE DRAWING NOT TO SCALE

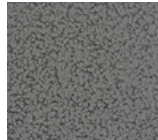


FINISHES

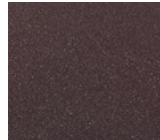
Antique Copper



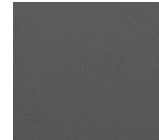
Antique Silver



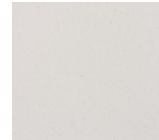
Bronze Mist



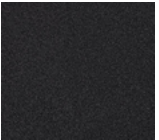
Matte Silver



Sand



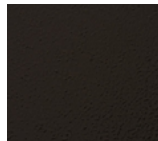
Swedish Steel



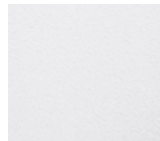
Textured Black



Textured Bronze



Textured White



For RAL Colors & Custom Match - Contact Teron Lighting Inc.

CAPRI LED CPT 36"

Architectural Indoor



Fixture Core

PROJECT:	
TYPE:	
PO#:	QTY:
COMMENTS:	

PRODUCT CODE	SOURCE/WATTAGE	VOLTAGE	DIMMING DRIVER
CPR36 - Capri 36"	L35.0-ZE1100 - 35W @ 1100mA 0-10V Dimming Driver L38.0-LT1200 - 38W @1200mA ELV Dimming Driver (Dimmable at 120V Only)	120V 277V	Not Applicable
ORDER INFO			
CPR36 Example ^	L35.0-ZE1100	120V	Not Applicable

Aesthetics & Options

TRIM	FINISH	COLOR TEMP	OPTIONS
CPT	AC - Antique Copper AS - Antique Silver BT - Bronze Mist SM - Matte Silver (Standard) SN - Sand SW - Swedish Steel TB - Textured Black BZ - Textured Bronze TW - Textured White	30K - 3000K Color Temp 35K - 3500K Color Temp 40K - 4000K Color Temp 50K - 5000K Color Temp	F - Fused TP - Tamper Resistant Screws
ORDER INFO			
CPT Example ^	AC	30K	F

PROD	SOURCE	30K SPECS			
CPR 36"	L35.0	<ul style="list-style-type: none"> 30K - 3000K Color Temp 5073 LED Source Lumens 145 LED Source Lumens Per Watt 			
	L38.0	<ul style="list-style-type: none"> 30K - 3000K Color Temp 5508 LED Source Lumens 145 LED Source Lumens Per Watt 			

REPLACEMENT PART	PART NO	NOTES
White 3' Acrylic Diffuser	3054360	
		Don't see the configuration you are looking for? Call us today at (513) 858-6004



TERONLIGHTING.COM
33 DONALD DR, FAIRFIELD, OH 45014
P: 513.858.6004 F: 513.858.6038
E: SALES@TERONLIGHT.COM



We reserve the right to revise the design components of any product due to parts availability or change in UL standards, without assuming any obligation or liability to modify any products previously manufactured, and without notice.