

Triton ADA

Architectural Outdoor



Elevating the benchmark for outdoor wall illumination, Triton ADA uniquely balances aesthetic brilliance with a strong commitment to accessibility. Distinctly designed with ADA compliance at its forefront, this fixture guarantees that lighting solutions meet the most stringent accessibility standards, ensuring inclusivity in design and application. This ADA-compliant feature makes it a prime choice for multifamily residences, commercial and retail facades, corridors, strip malls, and shopping centers, where both aesthetic appeal and accessibility are paramount. Beyond its luminous capabilities, Triton ADA stands as a testament to thoughtful design that embraces and prioritizes all users.

LED Engine

Color Temp (CCT): 3000K, 3500K, 4000K
CRI: 80+ (consult factory for 90+)
Life Expectancy: L70 rated at 50,000+ hours
Binning: 3-step Macadam
Output: 1465 Source Lumens

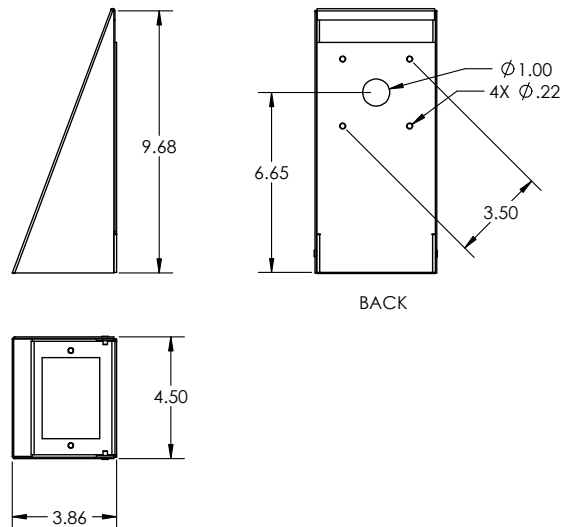
Driver

Type: Constant current, Class 2, 120-277 Vac, 50/60Hz
Dimming: 0-10V
Efficiency: Min 92%
Operating Temp: -40°C / -40°F to 50°C / 122°F
FCC Noise: Meets FCC Title 47 EMC Part 15 limits

Certifications

Location Listing: Wet Location Rated for Wall Mounting
Other: ADA Compliant
Buy America Compliant

Dimensions



Construction

Housing: die-formed aluminum with frosted white acrylic diffuser. **Mounting Plate:** die-formed aluminum. **Finish:** high quality polyester powder coating, various finishes. **Hardware:** stainless steel. **Mounting:** Wall-mounted over a 4-inch junction box.



Catalog String

Fixture Core

TTN-ADA

1

L12.0

3

ZE

4

UNIV

5

Aesthetics & Options

6

7

8

Product Specifications

1 — Product Code

TTN-ADA

2 — Trim

DL

UL

3 — Wattage

L12.0

4 — Dimming

ZE - 0-10V

5 — Voltage

UNIV - (120V-277V)

6 — Finish

FBK - Fine Textured Black

FBZ - Fine Textured Bronze

FWH - Fine Textured White

FSV - Fine Textured Silver

7 — CCT

30K - 3000K

35K - 3500K

40K - 4000K

8 — Options

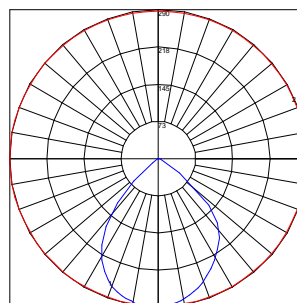
SPD - Surge Protection Device

TP - Tamper Resistant Screws

F - Fused

Performance

Wattage	Source Lumens	Efficacy LM/W	CCT
L12.0	1465	122	3000K



Polar Graph Details:

IES File Name: TTN-ADA-L12.0-UNV-XX-4000K.IES

Maximum Candela = 290 Located At Horizontal Angle = 180, Vertical Angle = 1

1 - Vertical Plane Through Horizontal Angles (180 - 0) (Through Max. Cd.)

2 - Horizontal Cone Through Vertical Angle (1) (Through Max. Cd.)

BUG Rating: B0-U0-G0