

CORNERSTONE MINI UDL LED

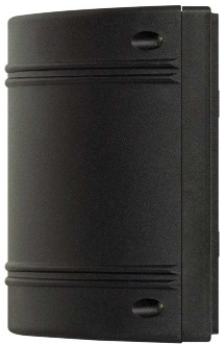
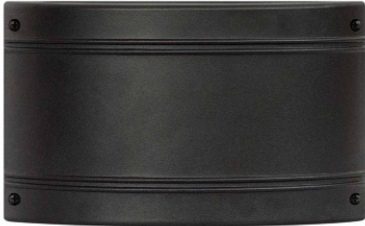
Architectural Outdoor



PROJECT:	
TYPE:	
PO#:	QTY:
COMMENTS:	

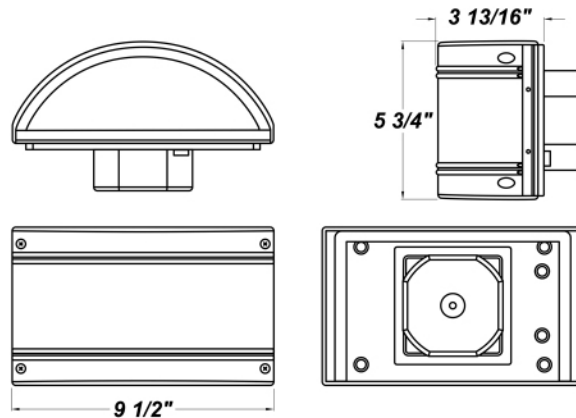
FEATURES

- ADA Compliant
- Aluminum Mounting Plate Mounts to Wall Surface (Centered Over And Attached to J-box)
- CSA Listed Wet Location For Wall Mounting
- Clear Polycarbonate Lenses
- Die-Cast Aluminum Housing w/ Textured Black Polyester Powder Coat Finish
- LED Light Fixture
- Surge Protector
- Up and Down Light



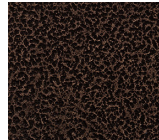
LINE DRAWING

LINE DRAWING NOT TO SCALE

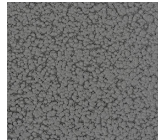


FINISHES

Antique Copper



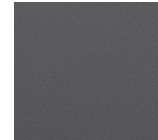
Antique Silver



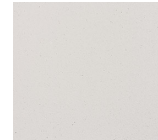
Bronze Mist



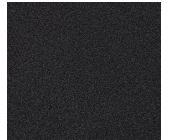
Matte Silver



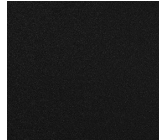
Sand



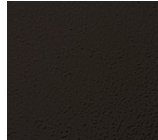
Swedish Steel



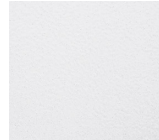
Textured Black



Textured Bronze



Textured White



For RAL Colors & Custom Match - Contact Teron Lighting Inc.

CORNERSTONE MINI UDL LED

Architectural Outdoor



Fixture Core

PROJECT:	
TYPE:	
PO#:	QTY:
COMMENTS:	

PRODUCT CODE	SOURCE/WATTAGE	VOLTAGE	DIMMING DRIVER
CRNM-UDL - Cornerstone MINI	L212.3-12CV - 32W @ 12V Constant Voltage Non-Dimming Driver L214.0-LT700 - 28W @ 700mA Leading and Trailing Edge Dimming Driver L214.0-ZE700 - 28W @ 700mA Constant Voltage 0-10V Dimming Driver	120 - 277V (50 / 60Hz)	Not Applicable
ORDER INFO			
CRNM-UDL	L212.3-12CV	120 - 277V	Not Applicable

Example ^ (may not represent a manufacturable product)

Aesthetics & Options

TRIM	FINISH	COLOR TEMP	OPTIONS
Not Applicable	AC - Antique Copper AS - Antique Silver BT - Bronze Mist SM - Matte Silver SN - Sand SW - Swedish Steel TB - Textured Black (Standard) BZ - Textured Bronze TW - Textured White	27K - 2700K Color Temp 30K - 3000K Color Temp 35K - 3500K Color Temp 40K - 4000K Color Temp 50K - 5000K Color Temp	CPL - Clear Polycarbonate Lens (Standard) F - Fused FAL - Frosted Acrylic Lens TP - Tamper Resistant Screws SPD - Surge Protection Device
ORDER INFO			
Not Applicable	AC	27K	CPL

Example ^ (may not represent a manufacturable product)

PROD	SOURCE	30K SPECS			
CRNM-UDL	L212.3	<ul style="list-style-type: none"> • 30K - 3000K Color Temp • 2528 LED Source Lumens (1264 Per Side) • 79 LED Source Lumens Per Watt 			
	L214.0	<ul style="list-style-type: none"> • 30K - 3000K Color Temp • 2930 LED Source Lumens (1465 Per Side) • 104.6 LED Source Lumens Per Watt 			

REPLACEMENT PART	PART NO	NOTES
Clear Polycarbonate Lens	34105	*Leading and Trailing Edge Drivers are dimmable @120V Only
Frosted Acrylic Lens	3056462	*Constant Voltage Drivers are non dimmable

Don't see the configuration you are looking for?
Call us today at (513) 858-6004



TERONLIGHTING.COM
33 DONALD DR, FAIRFIELD, OH 45014
P: 513.858.6004 F: 513.858.6038
E: SALES@TERONLIGHT.COM



We reserve the right to revise the design components of any product due to parts availability or change in UL standards, without assuming any obligation or liability to modify any products previously manufactured, and without notice.