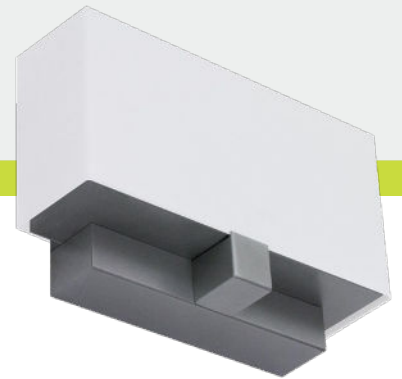


Bel Air Mini

Architectural Indoor



With its timeless elegance, the Bel Air Mini is crafted as a decorative wall sconce that excels in multifamily, hospitality, and commercial settings. It perfectly illuminates and enhances spaces like hallways, corridors, entryways, lobbies, and elevator areas. Its design seamlessly blends with diverse interiors, exuding a sense of sophistication and welcoming ambiance. For those seeking both aesthetic charm and practical illumination in such spaces, Bel Air Mini emerges as a quintessential choice.

LED Engine

Color Temp (CCT): 3000K, 3500K, 4000K
CRI: 80+ (consult factory for 90+)
Life Expectancy: L70 rated at 50,000+ hours
Binning: 3-step Macadam
Output: 1430 Lumens

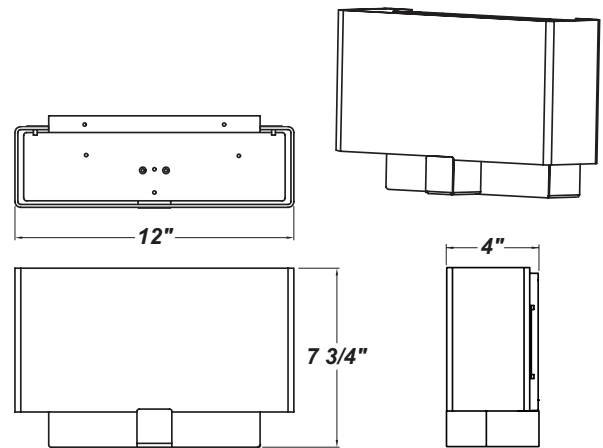
Driver

Type: Constant current, Class 2, 120-277 Vac, 50/60Hz
Dimming: 0-10V
Efficiency: Min 92%
Operating Temp: -40degC/-40degF to 50degC/122degF
FCC Noise: Meets FCC title 47 EMC Part 15 limits

Certifications

Location Listing: Dry Location Rated for Wall Mounting
Other: ADA Compliant
Buy American Compliant

Dimensions



Construction

Housing: Die-formed aluminum. **Trim:** Steel with frosted white acrylic diffuser. **Finish:** high quality polyester powder coating, various finishes. **Mounting:** Horizontal mounting over a 4-inch junction box.



Bel Air Mini

Architectural Indoor



Catalog String

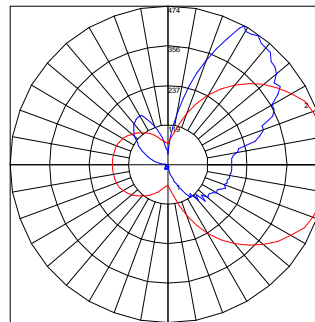
Fixture Core	BLRM 1	-- 2	 3	 4	UNIV 5
Aesthetics & Options	 6	 7	 8		

Product Specifications

1 — Product Code	2 — Trim	3 — Wattage	4 — Dimming	5 — Voltage
BLRM	Not Applicable	L25.0	ZE - 0-10V	UNIV - (120-277V)
6 — Finish	7 — CCT	8 — Options		
FBK - Fine Textured Black FBZ - Fine Textured Bronze FWH - Fine Textured White FSV - Fine Textured Silver	30K - 3000K 35K - 3500K 40K - 4000K	TCV - Acrylic Top Cover		

Performance

Wattage	Delivered Lumens	Efficacy LM/W	CCT
L25.0	1430	60	3000K



Polar Graph Details:

IES File Name: IES-BLRM-L25.0-120V-TB-30K.IES

Maximum Candela = 474 Located At Horizontal Angle = 10, Vertical Angle = 151

1 - Vertical Plane Through Horizontal Angles (10 - 190) (Through Max. Cd.)

2 - Horizontal Cone Through Vertical Angle (151) (Through Max. Cd.)

