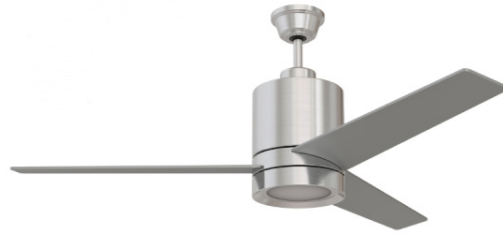


BOLARO BN 52"

Indoor Ceiling Fan



PROJECT:	
TYPE:	
PO#:	QTY:
COMMENTS:	

- UL Listed for Indoor Dry
- AC Motor
- Lead Wire Length of 78"
- Includes 4" Ceiling Rod
- Over All Height 17.95"
- 3 Blades @ Pitch 10°
- WC-6 Wall Control 3 Speed Forward/Reverse (Included)
- Max Stem Tilt of 25°
- Mounting Weight 16.72 lbs
- Minimum Distance - Blade to floor 7 ft
- LED Light Fixture

AIRFLOW Cubic Ft. Per Minute on High	RPM Revolutions Per- Minute on High	POWER USAGE Watts on High (Ex- cluding Lights)
4063	206	48.75

PRODUCT CODE	LENS	WATTAGE	LIGHT SOURCE
BOLA52- Bolaro 3 x 52" Blades	FWG - Frosted White Glass	L47.0 - 47W (HIGH)	1x 22W - 22W LED (Included Non Dimmable Wall Control)

Example ^ (may not represent a manufacturable product)

VOLTAGE	FINISH	BLADE FINISH	OPTIONS
120 - 120V	BN- Brushed Nickle	SI - Silver	RD12 - 12" Downrod RD24 - 24" Downrod RD36 - 36" Downrod RD48 - 48" Downrod



TERONLIGHTING.COM
33 DONALD DR, FAIRFIELD, OH 45014
P: 513.858.6004 F: 513.858.6038
E: SALES@TERONLIGHT.COM

Rev 04182022

We reserve the right to revise the design components of any product due to parts availability or change in UL standards, without assuming any obligation or liability to modify any products previously manufactured, and without notice.