

NIKE D LED 18"

Architectural Indoor



PROJECT:	
TYPE:	
PO#:	QTY:
COMMENTS:	

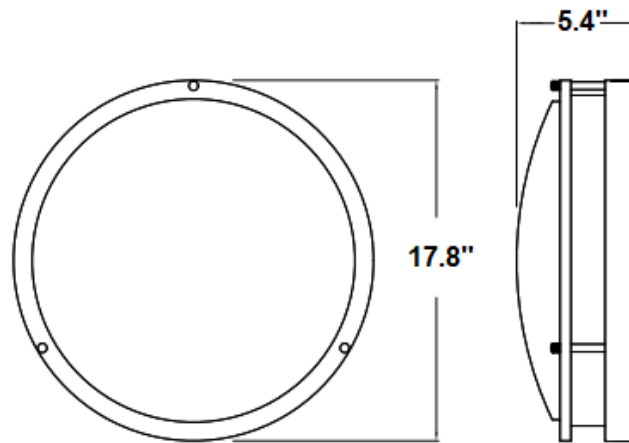
FEATURES

- CSA Listed Damp Location
- Die-Form Cold-Rolled Steel Housing w/ Brushed Nickel Plated Finish
- Emergency Battery Available
- LED Light Fixture
- Luminous White Acrylic Diffuser
- Mounting Hardware Included
- Mounts Directly to 4" Junction Box (By Others)
- Steel Mounting Pan w/ Hi-Reflectance White Powder Coat Finish
- Steel Trim w/ Brushed Nickel Plated Finish



LINE DRAWING

LINE DRAWING NOT TO SCALE

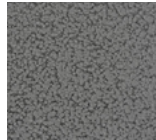


FINISHES

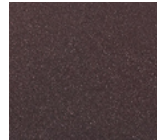
Antique Copper



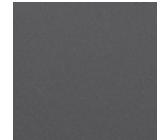
Antique Silver



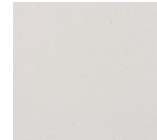
Bronze Mist



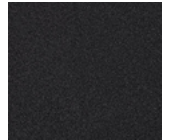
Matte Silver



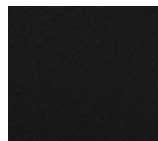
Sand



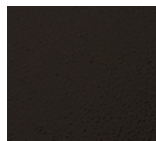
Swedish Steel



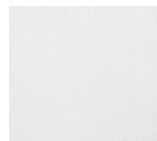
Textured Black



Textured Bronze



Textured White



For RAL Colors & Custom Match - Contact Teron Lighting Inc.

NIKE D LED 18"

Architectural Indoor



Fixture Core

PROJECT:	
TYPE:	
PO#:	QTY:
COMMENTS:	

PRODUCT CODE	SOURCE/WATTAGE	VOLTAGE	DIMMING DRIVER
NED18 - Nike D 18"	L21.0-ZE550 - (80) LED Array @ 700mA Line Voltage 4-Wire Dimming Driver (Dimmable 0 - 10V) L28.5-ZE750 - (80) LED Array @ 700mA Line Voltage 4-Wire Dimming Driver (Dimmable 0 - 10V)	120-277V (50 / 60Hz)	ZE - 0-10V Dimming
ORDER INFO			
NED18 Example ^	L21.0-ZE550	120V	ZE

Aesthetics & Options

TRIM	FINISH	COLOR TEMP	OPTIONS
Not Applicable	AC - Antique Copper TB - Textured Black AS - Antique Silver BT - Bronze Mist BZ - Textured Bronze BN - Brushed Nickel (Standard) TW - Textured White SM - Matte Silver SN - Sand SW - Swedish Steel	30K - 3000K Color Temp 35K - 3500K Color Temp 40K - 4000K Color Temp 50K - 5000K Color Temp	EB5 - 5W Emergency Integral LED Driver
ORDER INFO			
Not Applicable Example ^	BN	30K	EB5

PROD	SOURCE	30K SPECS				
NED18	L21.0	<ul style="list-style-type: none"> • 30K - 3000K Color Temp • 3100 LED Source Lumens • 151 LED Source Lumens Per Watt 				
	L28.5	<ul style="list-style-type: none"> • 30K - 3000K Color Temp • 4100 LED Source Lumens • 151 LED Source Lumens Per Watt 				

REPLACEMENT PART	PART NO	NOTES
18" White Acrylic Diffuser	3049760	

Don't see the configuration you are looking for?
Call us today at (513) 858-6004



TERONLIGHTING.COM
 33 DONALD DR, FAIRFIELD, OH 45014
 P: 513.858.6004 F: 513.858.6038
 E: SALES@TERONLIGHT.COM



We reserve the right to revise the design components of any product due to parts availability or change in UL standards, without assuming any obligation or liability to modify any products previously manufactured, and without notice.

NIKE D LED 18"

Architectural Indoor



Fixture Core

PROJECT:	
TYPE:	
PO#:	QTY:
COMMENTS:	

PRODUCT CODE	SOURCE/WATTAGE	VOLTAGE	DIMMING DRIVER
NED18 - Nike D 18"	L30.0-ZE1000 - (80) LED Array @ 1000mA Line Voltage 4-Wire Dimming Driver (Dimmable 0 - 10V) L37.5-ZE1100 - (120) LED Array @ 1100mA Line Voltage 4-Wire Dimming Driver (Dimmable 0 - 10V)	120-277V (50 / 60Hz)	ZE - 0-10V Dimming
ORDER INFO			
NED18 Example ^	L30.0-ZE1000	120V	Not Applicable

Aesthetics & Options

TRIM	FINISH	COLOR TEMP	OPTIONS
Not Applicable	AC - Antique Copper TB - Textured Black AS - Antique Silver BT - Bronze Mist BZ - Textured Bronze BN - Brushed Nickel (Standard) TW - Textured White SM - Matte Silver SN - Sand SW - Swedish Steel	30K - 3000K Color Temp 35K - 3500K Color Temp 40K - 4000K Color Temp 50K - 5000K Color Temp	EB5 - 5W Emergency Integral LED Driver
ORDER INFO			
Not Applicable Example ^	BN	30K	EB5

PROD	SOURCE	30K SPECS			
NED18	L30.0	<ul style="list-style-type: none"> 30K - 3000K Color Temp 4907 LED Source Lumens 163.5 LED Source Lumens Per Watt 			
	L37.5	<ul style="list-style-type: none"> 30K - 3000K Color Temp 4845 LED Source Lumens 121.2 LED Source Lumens Per Watt 			

REPLACEMENT PART	PART NO	NOTES
18" White Acrylic Diffuser	3049760	
		Don't see the configuration you are looking for? Call us today at (513) 858-6004



TERONLIGHTING.COM
 33 DONALD DR, FAIRFIELD, OH 45014
 P: 513.858.6004 F: 513.858.6038
 E: SALES@TERONLIGHT.COM



We reserve the right to revise the design components of any product due to parts availability or change in UL standards, without assuming any obligation or liability to modify any products previously manufactured, and without notice.