

TIGER CUB LED

Architectural Indoor



PROJECT:

TYPE:

PO#:

QTY:

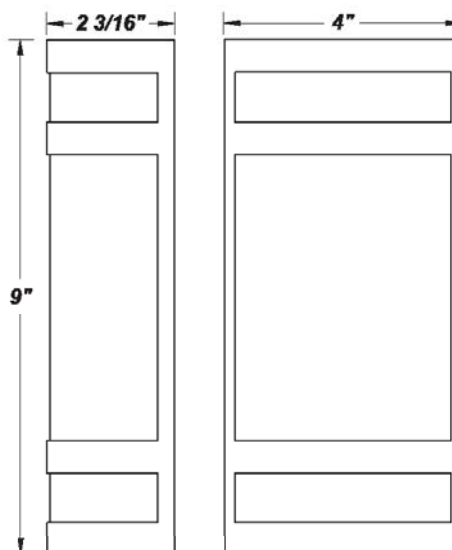
COMMENTS:

FEATURES

- ADA Compliant
- Centered Over and Mounted to 4" J-Box (By Others)
- CSA Listed Damp or Dry Location For Wall Mount
- Dimmable to 10%
- Driver Mounts to The Rear of The Fixture Inside Junction Box
- Luminous White Acrylic Diffuser
- Mounting Hardware Included
- Open Top and Bottom
- Painted Steel Mounting Plate Mounts to Flat Surface
- Steel Fascia with Matte Silver Powder Coat Finish
- Steel Mounting Plate Mounts to Flat Surface

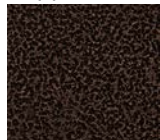
LINE DRAWING

LINE DRAWING NOT TO SCALE



FINISHES

Antique Copper



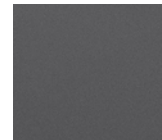
Antique Silver



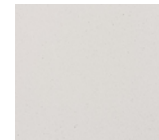
Bronze Mist



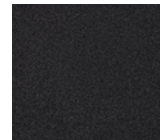
Matte Silver



Sand



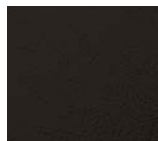
Swedish Steel



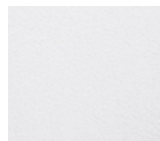
Textured Black



Textured Bronze



Textured White



For RAL Colors & Custom Match -
Contact Teron Lighting Inc.

TIGER CUB LED

Architectural Indoor



Fixture Core

PROJECT:	
TYPE:	
PO#:	QTY:
COMMENTS:	

PRODUCT CODE	SOURCE/WATTAGE	VOLTAGE	DIMMING DRIVER
TGC - Tiger Cub	1L4.0-ZE100 - 4W Single LED Strip @ 100mA Low Voltage 4-Wire Dimming Electronic Driver 2L4.0-ZE100 - 4W Double LED Strip @ 100mA Low Voltage 4-Wire Dimming Electronic Driver	120-277V	ZE - 0-10V Dimming
ORDER INFO			
TGC	L4.0-ZE100	120-277V	ZE
Example ^			

Aesthetics & Options

TRIM	FINISH	COLOR TEMP	OPTIONS
Not Applicable	AC - Antique Copper AS - Antique Silver BT - Bronze Mist SM - Matte Silver (Standard) SN - Sand SW - Swedish Steel TB - Textured Black BZ - Textured Bronze TW - Textured White	30K - 3000K Color Temp 35K - 3500K Color Temp 40K - 4000K Color Temp 50K - 5000K Color Temp	TBC - Perforated Steel Top & Bottom Covers TCV - Perforated Steel Top Cover
ORDER INFO			
Not Applicable	AC	30K	TBC
Example ^			

PROD	SOURCE	30K SPECS				
TGC	L4.0	<ul style="list-style-type: none">30K - 3000K Color Temp1870 LED Source Lumens467 LED Source Lumens Per Watt				

REPLACEMENT PART	PART NO	NOTES
White Acrylic Lens	3099460	Don't see the configuration you are looking for? Call us today at (513) 858-6004



TERONLIGHTING.COM
33 DONALD DR, FAIRFIELD, OH 45014
P: 513.858.6004 F: 513.858.6038
E: SALES@TERONLIGHT.COM



We reserve the right to revise the design components of any product due to parts availability or change in UL standards, without assuming any obligation or liability to modify any products previously manufactured, and without notice.

TIGER CUB LED

Architectural Indoor



Fixture Core

PROJECT:	
TYPE:	
PO#:	QTY:
COMMENTS:	

PRODUCT CODE	SOURCE/WATTAGE	VOLTAGE	DIMMING DRIVER
TGC - Tiger Cub	2L7.0-ZE175 - 7W Dual LED Strip @ 175mA Low Voltage 4-Wire Dimming Electronic Driver 2L10.0-ZE250 - 10W Dual LED Strip @ 100mA Low Voltage 4-Wire Dimming Electronic Driver	120-277V	ZE - 0-10V Dimming
ORDER INFO			
TGC	2L7.0-ZE175	120-277V	ZE
Example ^			

Aesthetics & Options

TRIM	FINISH	COLOR TEMP	OPTIONS
Not Applicable	AC - Antique Copper AS - Antique Silver BT - Bronze Mist SM - Matte Silver (Standard) SN - Sand SW - Swedish Steel TB - Textured Black BZ - Textured Bronze TW - Textured White	30K - 3000K Color Temp 35K - 3500K Color Temp 40K - 4000K Color Temp 50K - 5000K Color Temp	TBC - Perforated Steel Top & Bottom Covers TCV - Perforated Steel Top Cover
ORDER INFO			
Not Applicable	AC	30K	TBC
Example ^			

PROD	SOURCE	30K SPECS				
TGC	L7.0	<ul style="list-style-type: none">30K - 3000K Color Temp1006 LED Source Lumens143.7 LED Source Lumens Per Watt				
	L10.0	<ul style="list-style-type: none">30K - 3000K Color Temp1296 LED Source Lumens129.6 LED Source Lumens Per Watt				

REPLACEMENT PART	PART NO	NOTES
White Acrylic Lens	3099460	
		Don't see the configuration you are looking for? Call us today at (513) 858-6004

Architectural Indoor



COMMENTS: