

# GUARDIAN W MSI LED 26"

Architectural Outdoor



|           |      |
|-----------|------|
| PROJECT:  |      |
| TYPE:     |      |
| PO#:      | QTY: |
| COMMENTS: |      |

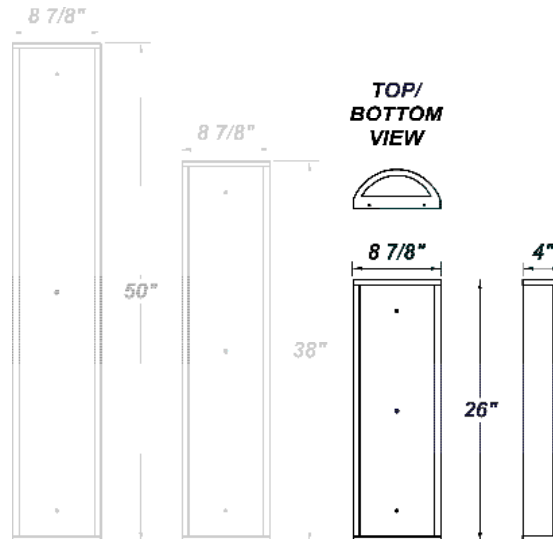


## FEATURES

- 120V – 277V
- Aluminum Reflector w/ Hi-Reflectance White Powder Coat Finish
- CSA Listed Wet Location Vertical Position Only
- CSA Listed Damp Location Horizontal Position
- Die Cast Aluminum End Caps w/ Matte Silver Polyester Powder Coat Finish
- Extruded Aluminum Housing w/ Matte Silver Polyester Powder Coat Finish
- Fixture Mounts Directly to Surface w/ Two Wall Anchors (Not Included)
- High Impact White Acrylic Diffuser (50% DR Acrylic)
- Internal Motion Sensor
- LED Light Fixture
- Over-Voltage and Over-Current
- Recessed Steel Screws

## LINE DRAWING

LINE DRAWING NOT TO SCALE

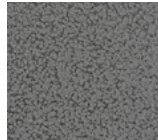


## FINISHES

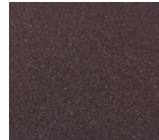
Antique Copper



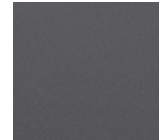
Antique Silver



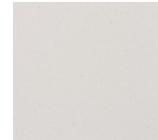
Bronze Mist



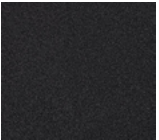
Matte Silver



Sand



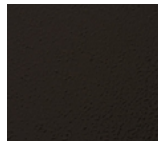
Swedish Steel



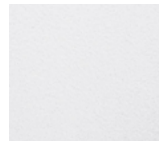
Textured Black



Textured Bronze



Textured White



For RAL Colors & Custom Match - Contact Teron Lighting Inc.

# GUARDIAN W MSI LED 26"

Architectural Outdoor



Fixture Core

|           |      |
|-----------|------|
| PROJECT:  |      |
| TYPE:     |      |
| PO#:      | QTY: |
| COMMENTS: |      |

| PRODUCT CODE                   | SOURCE/WATTAGE  | VOLTAGE                   | DIMMING DRIVER   |
|--------------------------------|---|---------------------------|--|
| <b>GRDW24</b> - Guardian W 26" | <b>L36.5</b> - 36.5W LED Strip(s)<br><b>L46.5</b> - 46.5W LED Strip(s)<br><b>L49.5</b> - 49.5W LED Strip(s) | <b>120</b><br><b>277V</b> | <b>SDxx</b> - Bi-Level Step Dimming from 10-90% in increments of 10% (replace xx in ordering code with requested dimming percentage) |
| ORDER INFO                     |   |                           |  |
| GRDW24                         | L36.5   | 120V                      | SD50   |

Example ^ (may not represent a manufacturable product)

Aesthetics & Options

| TRIM                  | FINISH   | COLOR TEMP  | OPTIONS  |
|-----------------------|--|---|--|
| <b>Not Applicable</b> | <b>AC</b> - Antique Copper<br><b>AS</b> - Antique Silver<br><b>BT</b> - Bronze Mist<br><b>SM</b> - Matte Silver (Standard)<br><b>SN</b> - Sand<br><b>SW</b> - Swedish Steel<br><b>TB</b> - Textured Black<br><b>BZ</b> - Textured Bronze<br><b>TW</b> - Textured White | <b>30K</b> - 3000K Color Temp<br><b>35K</b> - 3500K Color Temp<br><b>40K</b> - 4000K Color Temp | <b>OEL</b> - Single End Window<br><b>TEL</b> - Twin End Windows (Both Ends)<br><b>WAL</b> - White Acrylis Lens |
| ORDER INFO            |  |   |  |
|                       | AC   | 30K   | OEL  |

Example ^ (may not represent a manufacturable product)

| PROD          | SOURCE                                | 30K SPECS   | 35K SPECS   | 40K SPECS  |
|---------------|---------------------------------------|---|---|--|
| <b>GRDW24</b> | <b>L36.5</b> - 36.5W LED Linear Board | <ul style="list-style-type: none"> <li>34 fV, Color Temp = 3000K Nominal</li> <li>36.9W Input = 4898 LED Lumens</li> <li>Estimated 132.7 Lumens Per Watt</li> </ul> | <ul style="list-style-type: none"> <li>34 fV, Color Temp = 3500K Nominal</li> <li>36.9W Input = 4987 LED Lumens</li> <li>Estimated 135.1 Lumens Per Watt</li> </ul> | <ul style="list-style-type: none"> <li>34 fV, Color Temp = 4000K Nominal</li> <li>36.9W Input = 5165 LED Lumens</li> <li>Estimated 140 Lumens Per Watt</li> </ul>    |
|               | <b>L46.5</b> - 46.5W LED Linear Board | <ul style="list-style-type: none"> <li>34 fV, Color Temp = 3000K Nominal</li> <li>38.8W Input = 5064 LED Lumens</li> <li>Estimated 130.5 Lumens Per Watt</li> </ul> | <ul style="list-style-type: none"> <li>34 fV, Color Temp = 3500K Nominal</li> <li>38.8W Input = 5155 LED Lumens</li> <li>Estimated 132.9 Lumens Per Watt</li> </ul> | <ul style="list-style-type: none"> <li>34 fV, Color Temp = 4000K Nominal</li> <li>38.8W Input = 55340 LED Lumens</li> <li>Estimated 137.6 Lumens Per Watt</li> </ul> |
|               | <b>L49.5</b> - 49.5W LED Linear Board | <ul style="list-style-type: none"> <li>34 fV, Color Temp = 3000K Nominal</li> <li>40.7W Input = 5156 LED Lumens</li> <li>Estimated 126.7 Lumens Per Watt</li> </ul> | <ul style="list-style-type: none"> <li>34 fV, Color Temp = 3500K Nominal</li> <li>40.7W Input = 5250 LED Lumens</li> <li>Estimated 129 Lumens Per Watt</li> </ul>   | <ul style="list-style-type: none"> <li>34 fV, Color Temp = 4000K Nominal</li> <li>40.7W Input = 5437 LED Lumens</li> <li>Estimated 133.6 Lumens Per Watt</li> </ul>  |

| REPLACEMENT PART             | PART NO | NOTES   |
|------------------------------|---------|---|
| 2' Acrylic LED Lens Assembly | 38216   | *Don't see the configuration you are looking for? Call us today at (513) 858-6004 |



**TERONLIGHTING.COM**  
 33 DONALD DR, FAIRFIELD, OH 45014  
 P: 513.858.6004 F: 513.858.6038  
 E: SALES@TERONLIGHT.COM



We reserve the right to revise the design components of any product due to parts availability or change in UL standards, without assuming any obligation or liability to modify any products previously manufactured, and without notice.