

MYSTERE DL LED

Architectural Outdoor



PROJECT:	
TYPE:	
PO#:	QTY:
COMMENTS:	

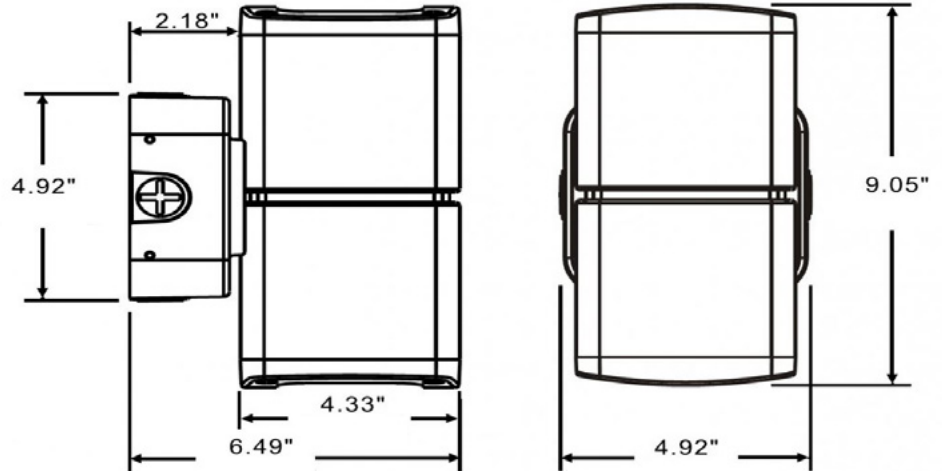
FEATURES

- Aluminum Die Cast Housing w/ Standard Bronze Powder Coat Finish
- Constant Current, Dimmable LE and TE
- CSA Listed Wet Location For Wall Mount Only
- Four 0.75in Threaded Side Conduit Entry Points
- Partial Frosted With Clear Center Glass Outer Diffusers
- LED Light Fixture
- Mounting Hardware Included
- Down Lighting Only



LINE DRAWING

LINE DRAWING NOT TO SCALE

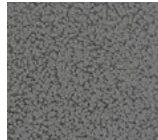


FINISHES

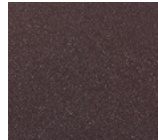
Antique Copper



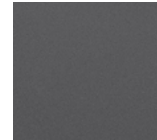
Antique Silver



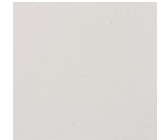
Bronze Mist



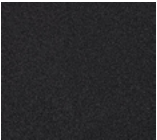
Matte Silver



Sand



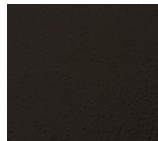
Swedish Steel



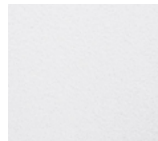
Textured Black



Textured Bronze



Textured White



For RAL Colors & Custom Match - Contact Teron Lighting Inc.

MYSTERE DL LED

Architectural Outdoor



Fixture Core

PROJECT:	
TYPE:	
PO#:	QTY:
COMMENTS:	

PRODUCT CODE	SOURCE/WATTAGE	VOLTAGE	DIMMING DRIVER
MYSDL - Mystere Down Light Budget Friendly LED	L13.0-LT350 - 350mA ELV Low Voltage 2-Wire Dimming Electronic Driver (Leading or Trailing Edge)	120 - 277V (50 / 60Hz)	Leading and Trailing edge Dimmable (120V Only)
ORDER INFO			
MYSDL	L13.0-LT350	120 - 277V	Not Applicable

Example ^ (may not represent a manufacturable product)

Aesthetics & Options

TRIM	FINISH	COLOR TEMP	OPTIONS
Not Applicable	AC - Antique Copper AS - Antique Silver BT - Bronze Mist SM - Matte Silver SN - Sand SW - Swedish Steel TB - Textured Black (Standard) BZ - Textured Bronze TW - Textured White	30K - 3000K Color Temp 35K - 3500K Color Temp 40K - 4000K Color Temp	Not Applicable
ORDER INFO			
Not Applicable	AC	30K	Not Applicable

Example ^ (may not represent a manufacturable product)

PROD	SOURCE	30K SPECS				
MYSDL	L13.0	<ul style="list-style-type: none"> • 30K - 3000K Color Temp • 1757 LED Source Lumens • 135.1 LED Source Lumens Per Watt 				

REPLACEMENT PART	PART NO	NOTES
Clear Glass Lens	37966	

Don't see the configuration you are looking for?
Call us today at (513) 858-6004



TERONLIGHTING.COM
33 DONALD DR, FAIRFIELD, OH 45014
P: 513.858.6004 F: 513.858.6038
E: SALES@TERONLIGHT.COM



We reserve the right to revise the design components of any product due to parts availability or change in UL standards, without assuming any obligation or liability to modify any products previously manufactured, and without notice.