

# CADET SMALL BFP LED

Architectural Indoor



PROJECT:	
TYPE:	
PO#:	QTY:
COMMENTS:	

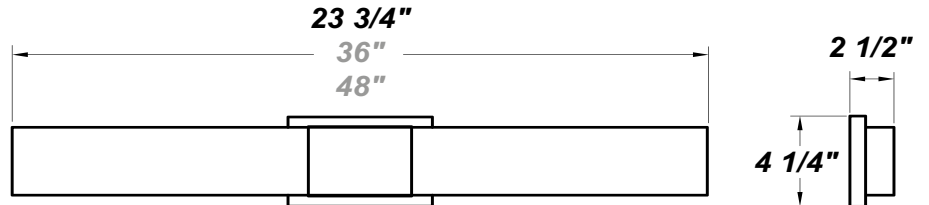
## FEATURES

- ADA Compliant
- Class 2 LED Driver: 120V - 277V
- CRI > 80
- Die-Formed Cold-Rolled Steel Housing
- ETL/cETL Listed For Damp Locations
- LED Light Fixture
- High Transmission Acrylic Optical Shade
- UL Listed
- Wall Mounted
- 5 Years Warranty on Driver and LED Module



## LINE DRAWING

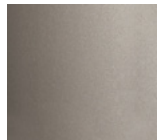
LINE DRAWING NOT TO SCALE



## FINISHES

Oil Rubbed  
Bronze

Satin Nickel



# CADET SMALL BFP LED

Architectural Indoor



Fixture Core

PROJECT:	
TYPE:	
PO#:	QTY:
COMMENTS:	

PRODUCT CODE	SOURCE/WATTAGE	VOLTAGE	DIMMING DRIVER
<b>CDTS - Cadet Small BFP LED</b>	<b>L17.0-LT700 - 17W @ 500mA</b> ELV Low Voltage 2-Wire Dimming Electronic Driver (Leading or Trailing Edge)	<b>120V - 277V</b>	<b>TRIAC Dimming @ 120V</b>
ORDER INFO			
CDTS	L17.0-LT500	120V - 277V	TRIAC

Example ^

Aesthetics & Options

TRIM	FINISH	COLOR TEMP	OPTIONS
<b>Not Applicable</b>	<b>ORB - Oil Rubbed Bronze</b> <b>SN - Satin Nickel</b>	<b>30K - 3000K Color Temp</b> <b>40K - 4000K Color Temp</b>	<b>Not Applicable</b>
ORDER INFO			
Not Applicable	SN	30K	Not Applicable

Example ^

PROD	SOURCE	30K SPECS				
<b>CDTS</b>	L17.0	<ul style="list-style-type: none"> <li>• 30K - 3000K Color Temp</li> <li>• 1500 LED Source Lumens</li> <li>• 88.2 LED Source Lumens Per Watt</li> </ul>				

## NOTES

Don't see the configuration you are looking for?  
Call us today at (513) 858-6004



**TERONLIGHTING.COM**  
33 DONALD DR, FAIRFIELD, OH 45014  
P: 513.858.6004 F: 513.858.6038  
E: SALES@TERONLIGHT.COM

We reserve the right to revise the design components of any product due to parts availability or change in UL standards, without assuming any obligation or liability to modify any products previously manufactured, and without notice.