

BELTERA VERTICAL SHELF LED

Architectural Indoor



PROJECT:	
TYPE:	
PO#:	QTY:
COMMENTS:	

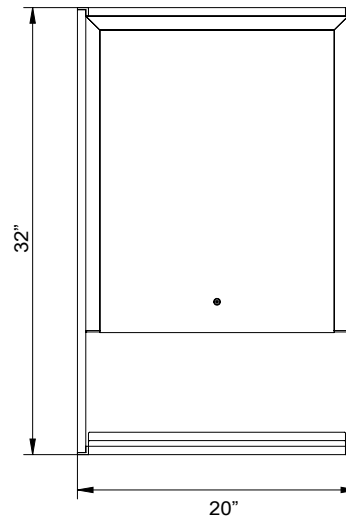


FEATURES

- ADA Compliant
- ETL/cETL Listed for Damp Locations
- Glass Composition With Metal Trim
- LED Light Fixture
- T24 Listed
- Wall Mounted
- 11.5 lbs.
- 80+ CRI

LINE DRAWING

LINE DRAWING NOT TO SCALE



FINISHES

For RAL Colors
& Custom
Match -
**Contact Teron
Lighting Inc.**

BELTERA VERTICAL SHELF LED

Architectural Indoor



Fixture Core

PROJECT:	
TYPE:	
PO#:	QTY:
COMMENTS:	

PRODUCT CODE	SOURCE/WATTAGE	VOLTAGE	DIMMING DRIVER
BLTVS - Beltera Vertical Shelf LED	L23.4-LTXXX - 23.4W @ XXXmA Constant Current Electronic Driver (Non-Dimmable) Note: Driver Current Information Coming Soon	120V	Not Applicable
ORDER INFO			
BLTVS Example ^	L23.4-LTXXX	120V	Not Applicable

Aesthetics & Options

TRIM	FINISH	COLOR TEMP	OPTIONS
Not Applicable	Not Applicable	27K-65K - 2700K-6500K Color Temp	Not Applicable
ORDER INFO			
Not Applicable Example ^	Not Applicable	27K-30K	Not Applicable

PROD	SOURCE	30K SPECS				
BLTVS	L23.4	<ul style="list-style-type: none"> • 30K - 3000K Color Temp • 2340 LED Source Lumens • 100.0 LED Source Lumens Per Watt 				

REPLACEMENT PART	PART NO	NOTES
		Don't see the configuration you are looking for? Call us today at (513) 858-6004



TERONLIGHTING.COM
 33 DONALD DR, FAIRFIELD, OH 45014
 P: 513.858.6004 F: 513.858.6038
 E: SALES@TERONLIGHT.COM

We reserve the right to revise the design components of any product due to parts availability or change in UL standards, without assuming any obligation or liability to modify any products previously manufactured, and without notice.