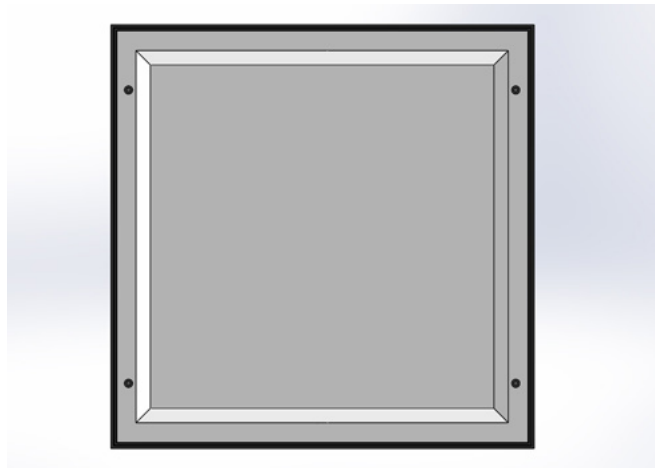
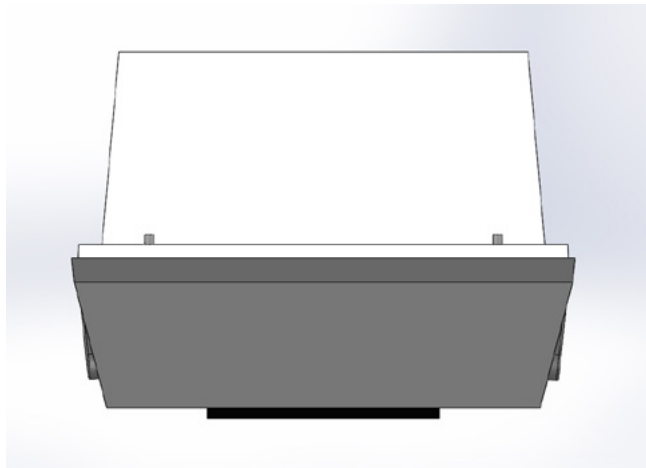




INSTALLATION & MAINTENANCE INSTRUCTIONS
Bunker LED
WALL MOUNTED LUMINAIRE P.N. 76017

WARNING: DISCONNECT POWER PRIOR TO INSTALLATION OR SERVICING OF FIXTURE

NOTE: THIS PRODUCT MUST BE INSTALLED IN ACCORDANCE WITH THE APPLICABLE LOCAL & NATIONAL ELECTRICAL CODES BY A PERSON FAMILIAR WITH THE CONSTRUCTION AND FAMILIAR WITH THE OPERATION OF THE PRODUCT AND HAZARDS INVOLVED.



INSTALLATION

1. Make sure the power to the area working in is shut off to avoid serious injury from electrical shock.
2. Remove any excess packing from the fixture.
3. The Bunker LED is designed to be mounted directly to a surface using (4) anchors. Through holes to be drilled by installer of fixture. Reference back pan for mounting hole pattern.
4. Remove (4) screws to remove lens. Carefully set aside.
5. Remove (2) screws to remove reflector. Carefully set aside.
6. Mount the housing and pan firmly by drilling into the wall. Be sure to pull the supply leads into the housing before the fixture is fastened to the mounting surface.
7. Connect the fixture leads to the supply leads. TLI stipulates the Black as Line; White as Common; Bare/Green as Ground. Connections should be made in the compartment. Make sure no wires rest against the reflector.
8. Re-attach reflector using (2) screws from step 5.
9. Re-attach lens using (4) screws from step 4.
10. Energize fixture to ensure proper connection.
11. Outdoor wall fixtures must be caulked with silicone sealant across the top, and at least 2" down each side of the fixture to properly seal it to the mounting surface. A small space should be open at the bottom for excess moisture runoff.
12. Fill rough or uneven surfaces, mortar joints, and any exterior holes with silicone sealant.

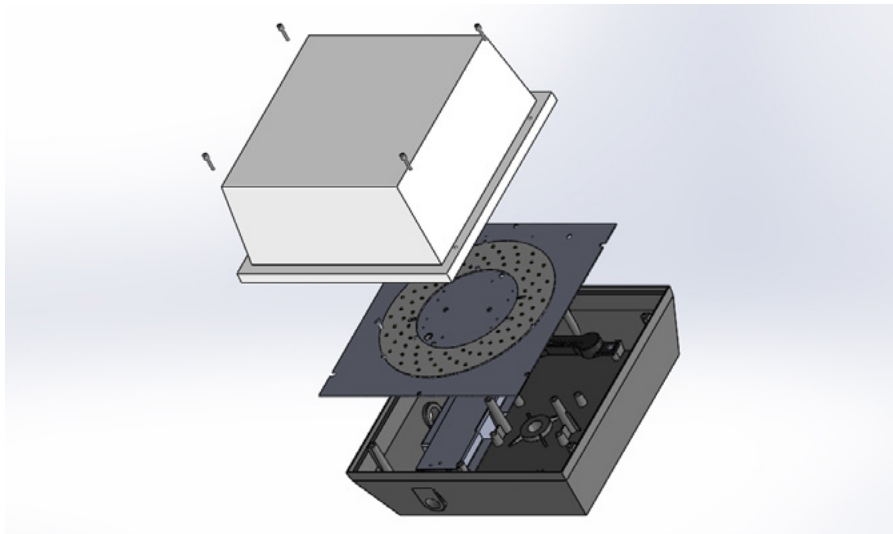
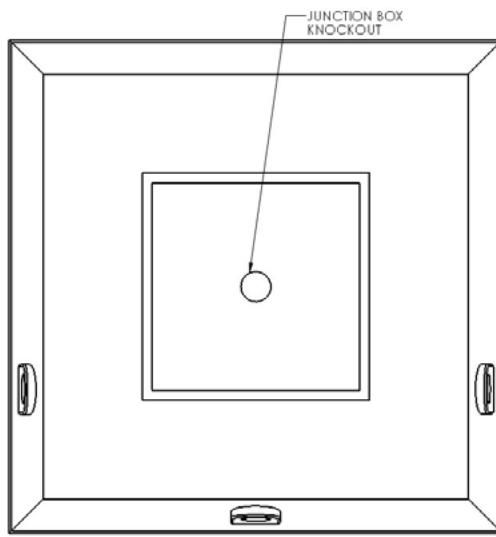
MAINTENANCE

DO NOT use cleansers containing bleach.

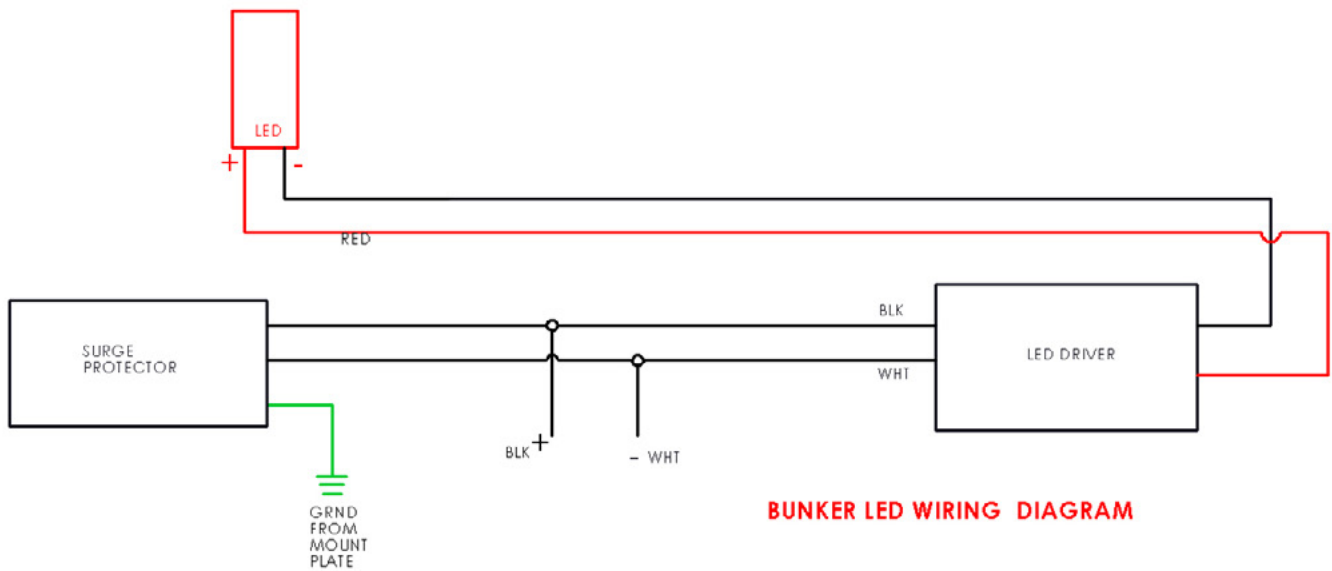
The metal portion of the fixture can be wiped clean as needed using a mild soap solution.

ATTENTION

Avoid moving any exposed wires. If any wires are accidentally disconnected, call a professional to repair.



WIRING DIAGRAM



BUNKER LED WIRING DIAGRAM