

VICEROY W SLT LED 12"

Architectural Outdoor



PROJECT:	
TYPE:	
PO#:	QTY:
COMMENTS:	



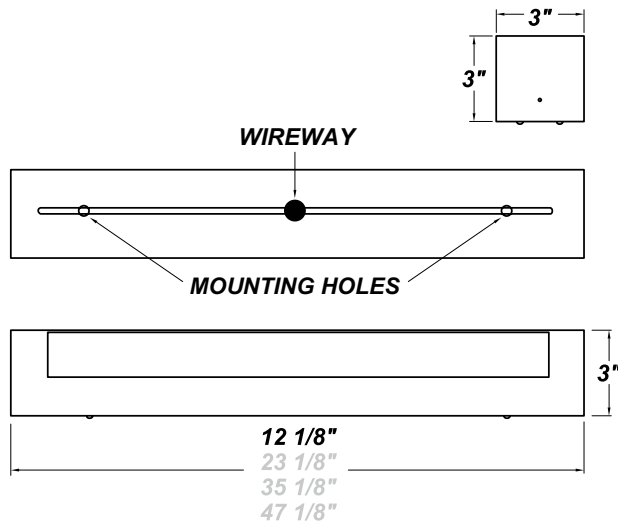
FEATURES

- ADA Compliant
- Aluminum Fixture w/ Matte Silver Powder Coat Finish
- Aluminum Mounting Plate Mounts to Wall Surface (Centered Over Conduit)
- CSA Listed Wet Location For Wall Mount
- Dimmable @ 120-277V
- Estimated Lumen Depreciation (TM-21) 70% of Initial Lumens (L70) @ 90,000 Hours
- Integral Surge Protector
- Leading or Trailing edge or 0-10V Dimming Available
- LED Light Fixture
- Requires a 1/2" Watertight Conduit Connector (Not Included)
- White Acrylic Lens



LINE DRAWING

LINE DRAWING NOT TO SCALE



FINISHES

Antique Copper



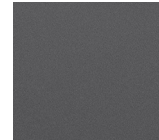
Antique Silver



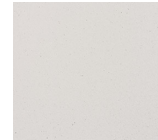
Bronze Mist



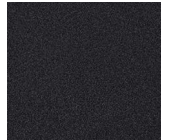
Matte Silver



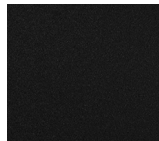
Sand



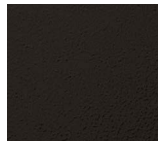
Swedish Steel



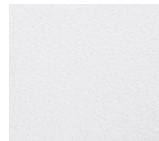
Textured Black



Textured Bronze



Textured White



For RAL Colors & Custom Match - Contact Teron Lighting Inc.

VICEROY W SLT LED 12"

Architectural Outdoor



Fixture Core

PROJECT:	
TYPE:	
PO#:	QTY:
COMMENTS:	

PRODUCT CODE	SOURCE/WATTAGE	VOLTAGE	DIMMING DRIVER
VCYW12 - Viceroy W 12"	L6.0-LT150 - 4.5W @ 150mA ELV Dimming Driver L8.0-LT200 - 6.8W @ 200mA ELV Dimming Driver L10.0-LT250 - 8.5W @ 250mA ELV Dimming Driver	120-277V	Not Applicable
ORDER INFO			
VCYW12 Example ^	L6.0-LT150	120-277V	Not Applicable

Aesthetics & Options

TRIM	FINISH	COLOR TEMP	OPTIONS
SLT	AC - Antique Copper AS - Antique Silver BT - Bronze Mist BZ - Textured Bronze SM - Matte Silver (Standard) SN - Sand SW - Swedish Steel TB - Textured Black TW - Textured Whit	30K - 3000K Color Temp 35K - 3500K Color Temp 40K - 4000K Color Temp 50K - 5000K Color Temp	Not Applicable
ORDER INFO			
UDL Example ^	SM	30K	Not Applicable

PROD	SOURCE	30K SPECS			
VCYW12	L6.0	<ul style="list-style-type: none"> 30K - 3000K Color Temp 762 LED Source Lumens 127 LED Source Lumens Per Watt 			
	L8.0	<ul style="list-style-type: none"> 30K - 3000K Color Temp 1017 LED Source Lumens 127 LED Source Lumens Per Watt 			
	L10.0	<ul style="list-style-type: none"> 30K - 3000K Color Temp 1271 LED Source Lumens 127 LED Source Lumens Per Watt 			

REPLACEMENT PART	PART NO	NOTES
12" Lens Assembly	3060360	
		Don't see the configuration you are looking for? Call us today at (513) 858-6004



TERONLIGHTING.COM
 33 DONALD DR, FAIRFIELD, OH 45014
 P: 513.858.6004 F: 513.858.6038
 E: SALES@TERONLIGHT.COM



We reserve the right to revise the design components of any product due to parts availability or change in UL standards, without assuming any obligation or liability to modify any products previously manufactured, and without notice.

VICEROY W SLT LED 12"

Architectural Outdoor



Fixture Core

PROJECT:	
TYPE:	
PO#:	QTY:
COMMENTS:	

PRODUCT CODE	SOURCE/WATTAGE	VOLTAGE	DIMMING DRIVER
VCYW12 - Viceroy W 12"	L12.0-LT300 - 10.2W @ 300mA ELV Dimming Driver L13.0-ZT350 - 11.2W @ 350mA ELV Dimming Driver, and 0-10V Dimming	120-277V	Not Applicable
ORDER INFO			
VCYW12 Example ^	L12.0-LT300	120-277V	Not Applicable

Aesthetics & Options

TRIM	FINISH	COLOR TEMP	OPTIONS
SLT	AC - Antique Copper AS - Antique Silver BT - Bronze Mist BZ - Textured Bronze SM - Matte Silver (Standard) SN - Sand SW - Swedish Steel TB - Textured Black TW - Textured Whit	30K - 3000K Color Temp 35K - 3500K Color Temp 40K - 4000K Color Temp 50K - 5000K Color Temp	Not Applicable
ORDER INFO			
UDL Example ^	AC	30K	Not Applicable

PROD	SOURCE	30K SPECS			
VCYW12	L12.0	<ul style="list-style-type: none"> 30K - 3000K Color Temp 1525 LED Source Lumens 127 LED Source Lumens Per Watt 			
	L13.0	<ul style="list-style-type: none"> 30K - 3000K Color Temp 853 LED Delivered Lumens 65 LED Delivered Lumens Per Watt 			

REPLACEMENT PART	PART NO	NOTES
12" Lens Assembly	3060360	
		Don't see the configuration you are looking for? Call us today at (513) 858-6004



TERONLIGHTING.COM
 33 DONALD DR, FAIRFIELD, OH 45014
 P: 513.858.6004 F: 513.858.6038
 E: SALES@TERONLIGHT.COM



We reserve the right to revise the design components of any product due to parts availability or change in UL standards, without assuming any obligation or liability to modify any products previously manufactured, and without notice.