

HOLLYWOOD PARK XXLARGE 30"

Architectural Indoor



PROJECT:	
TYPE:	
PO#:	QTY:
COMMENTS:	

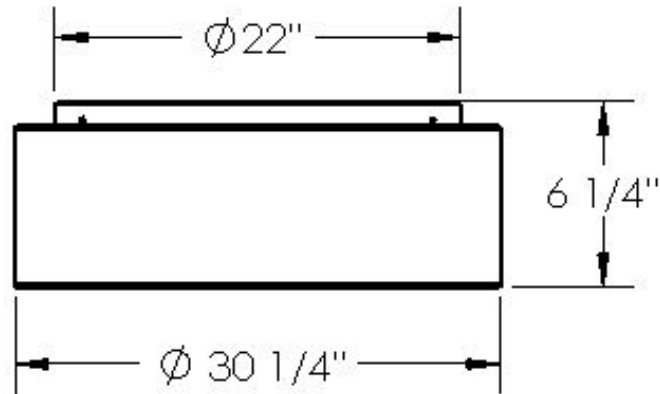
FEATURES

- CSA Listed Damp Location Wall and Ceiling
- LED Light Fixture
- Luminous White Acrylic Diffuser
- Mounts Directly to 4" Junction Box (By Others)
- Mounting Hardware Included
- Steel Mounting Pan w/ Hi-Reflectance White Powder Coat Finish



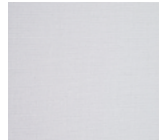
LINE DRAWING

LINE DRAWING NOT TO SCALE



FINISHES

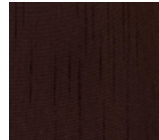
Bleached Linen



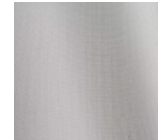
Cream Linen



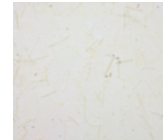
Espresso Linen



Platinum Linen



Textured Eggshell



For RAL Colors & Custom Match - Contact Teron Lighting Inc.

HOLLYWOOD PARK XXLARGE 30"

Architectural Indoor



Fixture Core

PROJECT:	
TYPE:	
PO#:	QTY:
COMMENTS:	

PRODUCT CODE	SOURCE/WATTAGE	VOLTAGE	DIMMING DRIVER
HPKXXL - Hollywood Park XXLarge	L30.0-ZE1000 - (80) LED Array @ Line Voltage 4-Wire Dimming Driver (Dimmable 0 - 10V) L37.5-ZE1000 - (120) LED Array @ Line Voltage 4-Wire Dimming Driver (Dimmable 0 - 10V)	120V 277V (50 / 60Hz)	Not Applicable
ORDER INFO			
HPKXXL Example ^	L30.0-ZE1000	120V	Not Applicable

Aesthetics & Options

TRIM	FINISH	COLOR TEMP	OPTIONS
Not Applicable	BLF - Bleached Linen Fabric CLF - Cream Linen Fabric TEF - Textured Eggshell Fabric ESF - Espresso Linen Fabric PLF - Platinum Linen Fabric	30K - 3000K Color Temp 35K - 3500K Color Temp 40K - 4000K Color Temp	EB/BB - Bodine BSL26 - Up to 5.1W Emergency Illumination w/ LEDs (Back Box Required)** LC- Laminate Coating (See Notes Below) MSI1 - Internal Motion Sensor MSI2 - Internal Motion Sensor STC12-WH - 12" Stem and Canopy Kit STC24-WH - 24" Stem and Canopy Kit STC36-WH - 36" Stem and Canopy Kit STC48-WH - 48" Stem and Canopy Kit
ORDER INFO			
Not Applicable Example ^	BNF	30K	EB/BB

PROD	SOURCE	30K SPECS				
HPKXXL	L30.0	<ul style="list-style-type: none"> 80 CRI Typ. 30K - 3000K Color Temp 4522 LED Source Lumens 134 LED Source Lumens Per Watt 				
	L37.5	<ul style="list-style-type: none"> 80 CRI Typ. 30K - 3000K Color Temp 4845 LED Source Lumens 135.4 LED Source Lumens Per Watt 				

REPLACEMENT PART	PART NO	NOTES
30" Platinum Linen	3043890	Don't see the configuration you are looking for? Call us today at (513) 858-6004
30" Textured Eggshell Linen	3043886	
30" Espresso Linen	3043887	
30" Cream Linen	3043791	
30" Bleached Linen	3043789	



TERONLIGHTING.COM
33 DONALD DR, FAIRFIELD, OH 45014
P: 513.858.6004 F: 513.858.6038
E: SALES@TERONLIGHT.COM



We reserve the right to revise the design components of any product due to parts availability or change in UL standards, without assuming any obligation or liability to modify any products previously manufactured, and without notice.

HOLLYWOOD PARK XXLARGE 30"

Architectural Indoor



Fixture Core

PROJECT:	
TYPE:	
PO#:	QTY:
COMMENTS:	

PRODUCT CODE	SOURCE/WATTAGE	VOLTAGE	DIMMING DRIVER
HPKXXL - Hollywood Park XXLarge	L50.0-ZE1750 - (4) 12.5W LED Boards@ 1750mA Line Voltage 4-Wire Dimming Driver (Dimmable 0 - 10V)	120V 277V (50 / 60Hz)	Not Applicable
ORDER INFO			
HPKXXL Example ^	L50.0-ZE1750	120V	Not Applicable

Aesthetics & Options

TRIM	FINISH	COLOR TEMP	OPTIONS
Not Applicable	BLF - Bleached Linen Fabric CLF - Cream Linen Fabric TEF - Textured Eggshell Fabric ESF - Espresso Linen Fabric PLF - Platinum Linen Fabric	30K - 3000K Color Temp 35K - 3500K Color Temp 40K - 4000K Color Temp	ALP - Aluminum Mount Pan w/ White Finish F - Fused LC- Laminate Coating (See Notes Below) STC12-WH - 12" Stem and Canopy Kit STC24-WH - 24" Stem and Canopy Kit STC36-WH - 36" Stem and Canopy Kit STC48-WH - 48" Stem and Canopy Kit
ORDER INFO			
Not Applicable Example ^	BLF	27K	ALP

PROD	SOURCE	30K SPECS				
HPKXXL	L50.0	<ul style="list-style-type: none"> 30K - 3000K Color Temp 8075 LED Source Lumens 161.5 LED Source Lumens Per Watt 				

REPLACEMENT PART	PART NO	NOTES
30" Platinum Linen	3043890	Don't see the configuration you are looking for? Call us today at (513) 858-6004
30" Textured Eggshell Linen	3043886	
30" Espresso Linen	3043887	
30" Cream Linen	3043791	
30" Bleached Linen	3043789	



TERONLIGHTING.COM
33 DONALD DR, FAIRFIELD, OH 45014
P: 513.858.6004 F: 513.858.6038
E: SALES@TERONLIGHT.COM



We reserve the right to revise the design components of any product due to parts availability or change in UL standards, without assuming any obligation or liability to modify any products previously manufactured, and without notice.