

# HOLLYWOOD PARK XLARGE 24"

Architectural Indoor



PROJECT:		
TYPE:		
PO#:		QTY:
COMMENTS:		

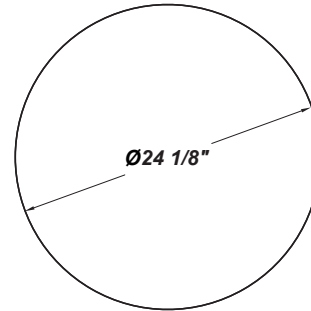
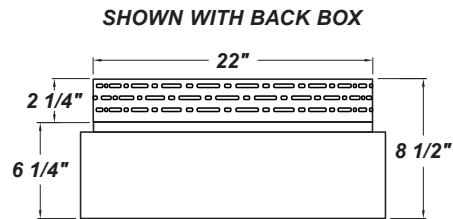
## FEATURES

- Aluminium Mounting Pan
- CSA Listed Damp Location Wall and Ceiling
- LED Light Fixture
- Luminous Fabric Diffuser
- Mounting Hardware Included
- Mounts Directly to 4" Junction Box (By Others)



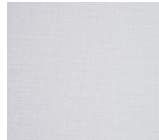
## LINE DRAWING

LINE DRAWING NOT TO SCALE

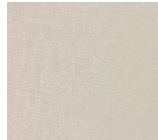


## FINISHES

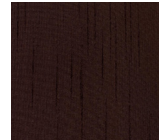
Bleached Linen



Cream Linen



Espresso Linen



Platinum Linen



Textured Eggshell



For RAL Colors  
& Custom  
Match -  
Contact Teron  
Lighting Inc.

# HOLLYWOOD PARK XLARGE 24"

Architectural Indoor



Fixture Core

PROJECT:	
TYPE:	
PO#:	QTY:
COMMENTS:	

PRODUCT CODE	SOURCE/WATTAGE	VOLTAGE	DIMMING DRIVER
HPKXL - Hollywood Park X-Large	L21.0-ZE700 - (80) LED Array @ Line Voltage 4-Wire Dimming Driver (Dimmable 0 - 10V)	120-277V (50 / 60Hz)	Not Applicable
ORDER INFO			
HPKXL Example ^	L21.0-ZE700	120-277V	Not Applicable

Aesthetics & Options

TRIM	FINISH	COLOR TEMP	OPTIONS
Not Applicable	<b>BLF</b> - Bleached Linen Fabric <b>CLF</b> - Cream Linen Fabric <b>TEF</b> - Textured Eggshell Fabric <b>ESF</b> - Espresso Linen Fabric <b>PLF</b> - Platinum Linen Fabric	<b>30K</b> - 3000K Color Temp <b>35K</b> - 3500K Color Temp <b>40K</b> - 4000K Color Temp	<b>EB/BB</b> - Bodine BSL26 - Up to 5.1W Emergency Illumination w/ LEDs (Back Box Required)** <b>LC</b> - Laminate Coating (See Notes Below) <b>STC12-WH</b> - 12" Stem and Canopy Kit <b>STC24-WH</b> - 24" Stem and Canopy Kit <b>STC36-WH</b> - 36" Stem and Canopy Kit
ORDER INFO			
Not Applicable Example ^	BLF	27K	LC

PROD	SOURCE	30K SPECS				
HPKXL	L21.0	<ul style="list-style-type: none"> <li>80 CRI Typ.</li> <li>30K - 3000K Color Tem</li> <li>105 LED Source Lumens Per Watt</li> </ul>				

REPLACEMENT PART	PART NO	NOTES
24" Platinum Linen	3043790	* Laminate Coating allows Lens to be easily wiped down with damp cloth. Not applicable to Textured Eggshell as it comes standard with Laminate Coating. Don't see the configuration you are looking for? Call us today at (513) 858-6004
24" Textured Eggshell Linen	3043786	
24" Espresso Linen	3043787	
24" Cream Linen	3043791	
24" Bleached Linen	3043789	



**TERONLIGHTING.COM**  
 33 DONALD DR, FAIRFIELD, OH 45014  
 P: 513.858.6004 F: 513.858.6038  
 E: SALES@TERONLIGHT.COM



We reserve the right to revise the design components of any product due to parts availability or change in UL standards, without assuming any obligation or liability to modify any products previously manufactured, and without notice.

# HOLLYWOOD PARK XLARGE 24"

Architectural Indoor



Fixture Core

PROJECT:	
TYPE:	
PO#:	QTY:
COMMENTS:	

PRODUCT CODE	SOURCE/WATTAGE	VOLTAGE	DIMMING DRIVER
HPKXL - Hollywood Park X-Large	<b>L30.0-ZE1000</b> - (80) LED Array @ Line Voltage 4-Wire Dimming Driver (Dimmable 0 - 10V) <b>L37.5-ZE1000</b> - (120) LED Array @ Line Voltage 4-Wire Dimming Driver (Dimmable 0 - 10V)	<b>120-277V</b> (50 / 60Hz)	<b>Not Applicable</b>
ORDER INFO			
HPKXL Example ^	L37.5-ZE1000	120-277V	Not Applicable

Aesthetics & Options

TRIM	FINISH	COLOR TEMP	OPTIONS
<b>Not Applicable</b>	<b>BLF</b> - Bleached Linen Fabric <b>CLF</b> - Cream Linen Fabric <b>TEF</b> - Textured Eggshell Fabric <b>ESF</b> - Espresso Linen Fabric <b>PLF</b> - Platinum Linen Fabric	<b>30K</b> - 3000K Color Temp <b>35K</b> - 3500K Color Temp <b>40K</b> - 4000K Color Temp	<b>EB/BB</b> - Bodine BSL26 - Up to 5.1W Emergency Illumination w/ LEDs (Back Box Required)** <b>LC</b> - Laminate Coating (See Notes Below) <b>STC12-WH</b> - 12" Stem and Canopy Kit <b>STC24-WH</b> - 24" Stem and Canopy Kit <b>STC36-WH</b> - 36" Stem and Canopy Kit
ORDER INFO			
Not Applicable Example ^	BLF	30K	EB/BB

PROD	SOURCE	30K SPECS				
HPKXL	L30.0	<ul style="list-style-type: none"> <li>80 CRI Typ.</li> <li>30K - 3000K Color Tem</li> <li>4522 LED Source Lumens</li> <li>134 LED Source Lumens Per Watt</li> </ul>				
	L37.5	<ul style="list-style-type: none"> <li>80 CRI Typ.</li> <li>30K - 3000K Color Tem</li> <li>4845 LED Source Lumens</li> <li>135.4 LED Source Lumens Per Watt</li> </ul>				

REPLACEMENT PART	PART NO	NOTES
24" Platinum Linen	3043790	* Laminate Coating allows Lens to be easily wiped down with damp cloth. Not applicable to Textured Eggshell as it comes standard with Laminate Coating.
24" Textured Eggshell Linen	3043786	
24" Espresso Linen	3043787	
24" Cream Linen	3043791	
24" Bleached Linen	3043789	
		Don't see the configuration you are looking for? Call us today at (513) 858-6004



**TERONLIGHTING.COM**  
 33 DONALD DR, FAIRFIELD, OH 45014  
 P: 513.858.6004 F: 513.858.6038  
 E: SALES@TERONLIGHT.COM



We reserve the right to revise the design components of any product due to parts availability or change in UL standards, without assuming any obligation or liability to modify any products previously manufactured, and without notice.