

CORONA LED

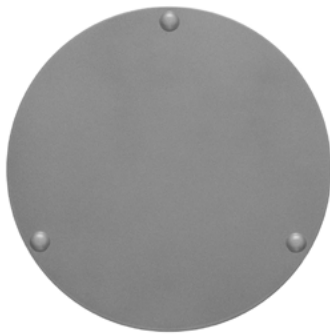
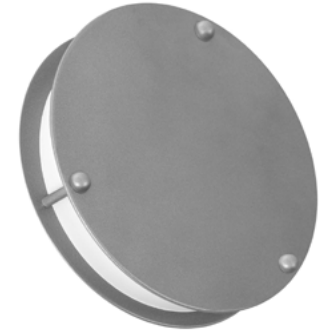
Architectural Indoor



PROJECT:	
TYPE:	
PO#:	QTY:
COMMENTS:	

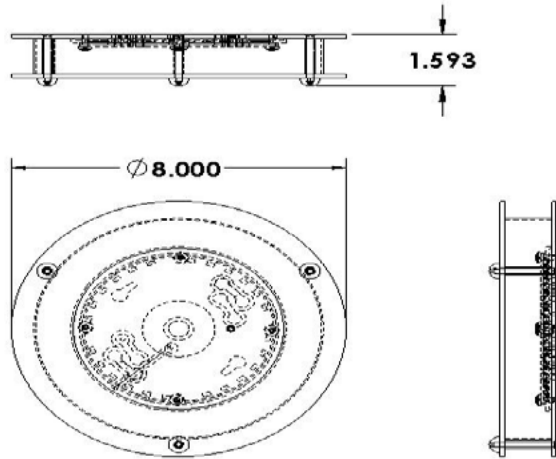
FEATURES

- ADA Compliant
- Aluminum Fixture w/ Powder Coat Finish
- CSA Listed Dry Location For Wall Mount
- Dimmable @ 120V
- Indirect Lighting Source
- LEDs Are Lensed And Not Exposed
- LED Light Fixture
- Luminous Polycarbonate Diffuser Lens
- Mounts Directly to 4" Junction Box (By Others)
- Triac Dimmable to 5% - Forward and Reverse Phase
- 23 Watt- 40 LED Round Module w/ On-Board Driver



LINE DRAWING

LINE DRAWING NOT TO SCALE

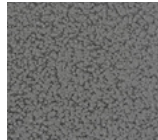


FINISHES

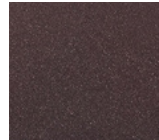
Antique Copper



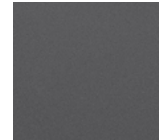
Antique Silver



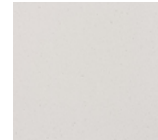
Bronze Mist



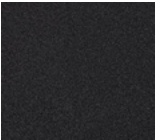
Matte Silver



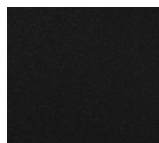
Sand



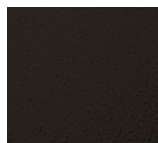
Swedish Steel



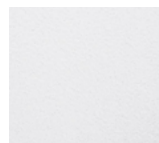
Textured Black



Textured Bronze



Textured White



For RAL Colors & Custom Match - Contact Teron Lighting Inc.

CORONA LED

Architectural Indoor



Fixture Core

PROJECT:	
TYPE:	
PO#:	QTY:
COMMENTS:	

PRODUCT CODE	SOURCE/WATTAGE	VOLTAGE	DIMMING DRIVER
CNA - Corona	L23.0-LT - 23.0W Leading and Trailing Edge Dimming Driver	120V 277V-Call For Availability (50 / 60Hz)	Triac dimmable to 5% (Forward & Reverse Phase)
ORDER INFO			
CNA Example ^	L23.0-LT	120V	See Source/Wattage

Aesthetics & Options

TRIM	FINISH	COLOR TEMP	OPTIONS
Not Applicable	AC - Antique Copper AS - Antique Silver BT - Bronze Mist SM - Matte Silver (Standard) SN - Sand SW - Swedish Steel TB - Textured Black BZ - Textured Bronze TW - Textured White	30K - 3000K Color Temp 40K - 4000K Color Temp	Not Applicable
ORDER INFO			
Not Applicable Example ^	SM	30K	Not Applicable

PROD	SOURCE	30K SPECS				
CNA	L23.0	<ul style="list-style-type: none"> • 30K - 3000K Color Temp • 1850 Source Lumens • 80.4 Source Lumens Per Watt 				

REPLACEMENT PART	PART NO	NOTES
		Darker Finishes May Reduce The LED Output. Textured White And Matte Silver Are Recommended for Maximum Light Output. Don't see the configuration you are looking for? Call us today at (513) 858-6004



TERONLIGHTING.COM
 33 DONALD DR, FAIRFIELD, OH 45014
 P: 513.858.6004 F: 513.858.6038
 E: SALES@TERONLIGHT.COM



We reserve the right to revise the design components of any product due to parts availability or change in UL standards, without assuming any obligation or liability to modify any products previously manufactured, and without notice.