

EPSILON BFP LED 19"

Architectural Indoor



PROJECT:	
TYPE:	
PO#:	QTY:
COMMENTS:	

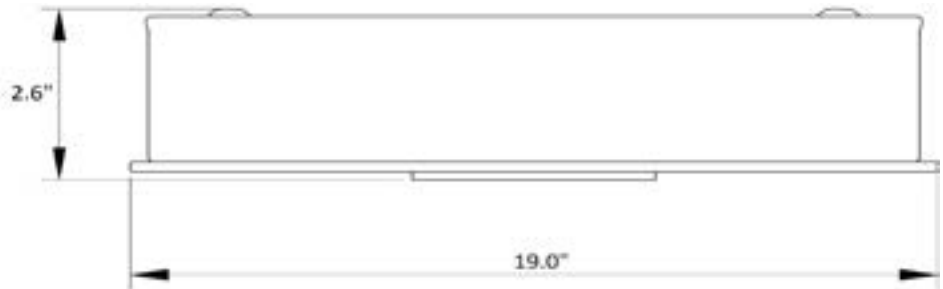
FEATURES

- Energy Star
- ETL/cETL Listed Damp Location For Ceiling or Wall Mount
- LED Light Fixture
- Mounts Directly to Surface w/ Two Wall Anchors
- Steel Housing with Brushed Nickel Finish
- White Frosted Glass Diffuser



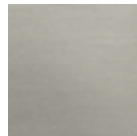
LINE DRAWING

LINE DRAWING NOT TO SCALE



FINISHES

Brushed
Nickel



EPSILON BFP LED 19"

Architectural Indoor



Fixture Core

PROJECT:	
TYPE:	
PO#:	QTY:
COMMENTS:	

PRODUCT CODE	SOURCE/WATTAGE	VOLTAGE	DIMMING DRIVER
EN19 - Epsilon 19"	L35.0-1050 - (1) 35W @ 1050mA	120V - 277V	Not Applicable
ORDER INFO			
EN19 Example ^	L35.0-1050	120/277V	Not Applicable

Aesthetics & Options

TRIM	FINISH	COLOR TEMP	OPTIONS
Not Applicable	BN - Brushed Nickel (Standard)	30K - 3000K Color Temp. 40K - 4000K Color Temp.	Not Applicable
ORDER INFO			
Not Applicable Example ^	BN	30K	Not Applicable

PROD	SOURCE	40K SPECS				
EN19	L35.0	<ul style="list-style-type: none"> 40K - 4000K Color Temp 2074 LED Delivered Lumens 59.3 LED Delivered Lumens Per Watt 				

REPLACEMENT PART	PART NO	NOTES
		L70 >50,000 hrs Minimum Starting Temperature = -20 Degrees C



TERONLIGHTING.COM
 33 DONALD DR, FAIRFIELD, OH 45014
 P: 513.858.6004 F: 513.858.6038
 E: SALES@TERONLIGHT.COM

We reserve the right to revise the design components of any product due to parts availability or change in UL standards, without assuming any obligation or liability to modify any products previously manufactured, and without notice.