

# COPPER CREEK 48" LED

Architectural Indoor



PROJECT:	
TYPE:	
PO#:	QTY:
COMMENTS:	

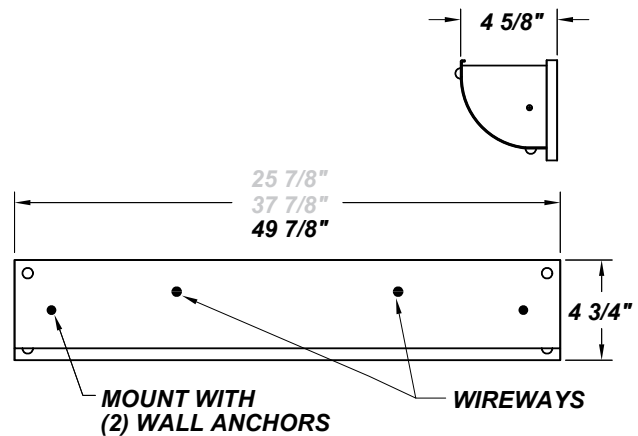
## FEATURES

- CSA Listed Dry Location For Wall Mount
- LED Light Fixture
- Steel Mount Pan w/ Textured White Powder Coat Finish
- Steel Mount Plate Mounts to Wall Surface (Centered over J-Box) and mounts to wall with two fasteners (not included)



## LINE DRAWING

LINE DRAWING NOT TO SCALE

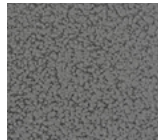


## FINISHES

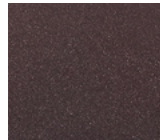
Antique Copper



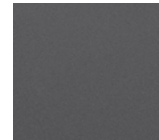
Antique Silver



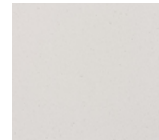
Bronze Mist



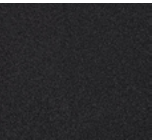
Matte Silver



Sand



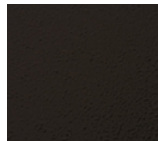
Swedish Steel



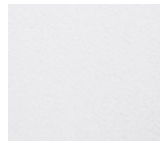
Textured Black



Textured Bronze



Textured White



For RAL Colors & Custom Match - Contact Teron Lighting Inc.

# COPPER CREEK 48" LED

Architectural Indoor



Fixture Core

PROJECT:	
TYPE:	
PO#:	QTY:
COMMENTS:	

PRODUCT CODE	SOURCE/WATTAGE	VOLTAGE	DIMMING DRIVER
CK48 - Copper Creek 48"	L63.0-ZE1400 - 63.0W @ 1400mA (0-10V Dimming Driver)	120-277V (50 / 60Hz)	Not Applicable
ORDER INFO			
CK48 Example ^	L63.0-ZE1400	120-277V	Not Applicable

Aesthetics & Options

TRIM	FINISH	COLOR TEMP	OPTIONS
Not Applicable	<b>AC</b> - Antique Copper <b>AS</b> - Antique Silver <b>BN</b> - Brushed Nickel Plate (Standard) <b>BT</b> - Bronze Mist <b>SM</b> - Matte Silver <b>SN</b> - Sand <b>SW</b> - Swedish Steel <b>TB</b> - Textured Black <b>BZ</b> - Textured Bronze <b>TW</b> - Textured White (Standard)	<b>30K</b> - 3000K Color Temp <b>35K</b> - 3500K Color Temp <b>40K</b> - 4000K Color Temp <b>50K</b> - 5000K Color Temp	Not Applicable
ORDER INFO			
Not Applicable Example ^	TW	30K	Not Applicable

PROD	SOURCE	30K SPECS				
CK48	L63.0	<ul style="list-style-type: none"> <li>30K - 3000K Color Temp</li> <li>7990 Source Lumens</li> <li>126.8 LED Source Lumens Per Watt</li> </ul>				

REPLACEMENT PART	PART NO	NOTES
		Don't see the configuration you are looking for? Call us today at (513) 858-6004



**TERONLIGHTING.COM**  
 33 DONALD DR, FAIRFIELD, OH 45014  
 P: 513.858.6004 F: 513.858.6038  
 E: SALES@TERONLIGHT.COM



We reserve the right to revise the design components of any product due to parts availability or change in UL standards, without assuming any obligation or liability to modify any products previously manufactured, and without notice.