

# CORDOVA DBL LED

Architectural Indoor



PROJECT:	
TYPE:	
PO#:	QTY:
COMMENTS:	

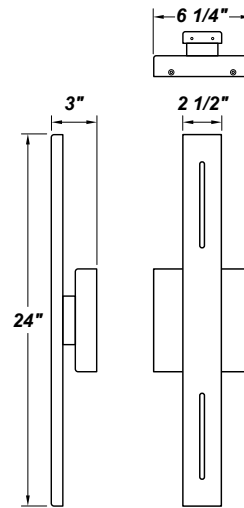


## FEATURES

- Aluminum Fascia And Mount Pan w/ Matte Silver Powder Coat Finish
- Aluminum Mount Plate Mounts to Wall Surface (Offset Over And Attached to J-Box)
- Constant Current Leading / Trailing Edge Driver
- Indirect Light Source
- UL Class 2 Driver
- ADA Compliant
- CSA Listed Dry Location For Wall Mount
- LED Light Fixture

## LINE DRAWING

LINE DRAWING NOT TO SCALE

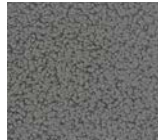


## FINISHES

Antique Copper



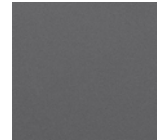
Antique Silver



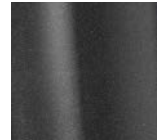
Bronze Mist



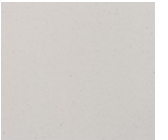
Matte Silver



Metallic Black



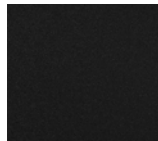
Sand



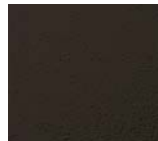
Swedish Steel



Textured Black



Textured Bronze



Textured White



For RAL Colors & Custom Match - Contact Teron Lighting Inc.

# CORDOVA DBL LED

Architectural Indoor



Fixture Core

PROJECT:	
TYPE:	
PO#:	QTY:
COMMENTS:	

PRODUCT CODE	SOURCE/WATTAGE	VOLTAGE	DIMMING DRIVER
CVA-DBL - Cordova DBL	<b>L11.3-LT350</b> - 11.3W @ 350mA ELV Dimming Driver <b>L13.0-LT400</b> - 13.0W @ 400mA ELV Dimming Driver	<b>120V</b> <b>277V</b> (50 / 60Hz)	Not Applicable
ORDER INFO			
CVA-DBL Example ^	L11.3	120V	Not Applicable

Aesthetics & Options

TRIM	FINISH	COLOR TEMP	OPTIONS
Not Applicable	<b>AC</b> - Antique Copper <b>AS</b> - Antique Silver <b>BT</b> - Bronze Mist <b>MB</b> - Metallic Black <b>SM</b> - Matte Silver (Standard) <b>SN</b> - Sand <b>SW</b> - Swedish Steel <b>TB</b> - Textured Black <b>BZ</b> - Textured Bronze <b>TW</b> - Textured White	<b>27K</b> - 2700K Color Temp <b>30K</b> - 3000K Color Temp <b>35K</b> - 3500K Color Temp <b>40K</b> - 4000K Color Temp <b>50K</b> - 5000k Color Temp	<b>SP</b> - Surge Protector
ORDER INFO			
Not Applicable Example ^	AC	27K	SP

PROD	SOURCE	30K SPECS				
CVA-DBL	L11.3	<ul style="list-style-type: none"> <li>30K - 3000K Color Temp</li> <li>1740 LED Source Lumens</li> <li>154.0 LED Source Lumens Per Watt</li> </ul>				
	L13.0	<ul style="list-style-type: none"> <li>30K - 3000K Color Temp</li> <li>1989 LED Source Lumens</li> <li>153.0 LED Source Lumens Per Watt</li> </ul>				

REPLACEMENT PART	PART NO	NOTES
		Don't see the configuration you are looking for? Call us today at (513) 858-6004



**TERONLIGHTING.COM**  
 33 DONALD DR, FAIRFIELD, OH 45014  
 P: 513.858.6004 F: 513.858.6038  
 E: SALES@TERONLIGHT.COM



We reserve the right to revise the design components of any product due to parts availability or change in UL standards, without assuming any obligation or liability to modify any products previously manufactured, and without notice.

# CORDOVA DBL LED

Architectural Indoor



Fixture Core

PROJECT:	
TYPE:	
PO#:	QTY:
COMMENTS:	

PRODUCT CODE	SOURCE/WATTAGE	VOLTAGE	DIMMING DRIVER
CVA-DBL - Cordova DBL	<b>L14.6-LT450</b> - 14.6W @ 450mA ELV Dimming Driver <b>L16.5-LT500</b> - 16.5W @ 500mA ELV Dimming Driver	<b>120V</b> <b>277V</b> (50 / 60Hz)	Not Applicable
ORDER INFO			
CVA-DBL Example ^	L11.3	120V	Not Applicable

Aesthetics & Options

TRIM	FINISH	COLOR TEMP	OPTIONS
Not Applicable	<b>AC</b> - Antique Copper <b>TB</b> - Textured Black <b>AS</b> - Antique Silver <b>BT</b> - Bronze Mist <b>BZ</b> - Textured Bronze <b>MB</b> - Metallic Black <b>TW</b> - Textured White <b>SM</b> - Matte Silver (Standard) <b>SN</b> - Sand <b>SW</b> - Swedish Steel	<b>27K</b> - 2700K Color Temp <b>30K</b> - 3000K Color Temp <b>35K</b> - 3500K Color Temp <b>40K</b> - 4000K Color Temp <b>50K</b> - 5000k Color Temp	<b>SP</b> - Surge Protector
ORDER INFO			
Not Applicable Example ^	AC	27K	SP

PROD	SOURCE	30K SPECS				
CVA-DBL	L14.6	<ul style="list-style-type: none"> <li>30K - 3000K Color Temp</li> <li>2237 LED Source Lumens</li> <li>153.2 LED Source Lumens Per Watt</li> </ul>				
	L16.5	<ul style="list-style-type: none"> <li>30K - 3000K Color Temp</li> <li>2486 LED Source Lumens</li> <li>150.6 LED Source Lumens Per Watt</li> </ul>				

REPLACEMENT PART	PART NO	NOTES
		Don't see the configuration you are looking for? Call us today at (513) 858-6004



**TERONLIGHTING.COM**  
 33 DONALD DR, FAIRFIELD, OH 45014  
 P: 513.858.6004 F: 513.858.6038  
 E: SALES@TERONLIGHT.COM



We reserve the right to revise the design components of any product due to parts availability or change in UL standards, without assuming any obligation or liability to modify any products previously manufactured, and without notice.