

OVERLAND MSE LED 24"

Architectural Indoor



PROJECT:	
TYPE:	
PO#:	QTY:
COMMENTS:	

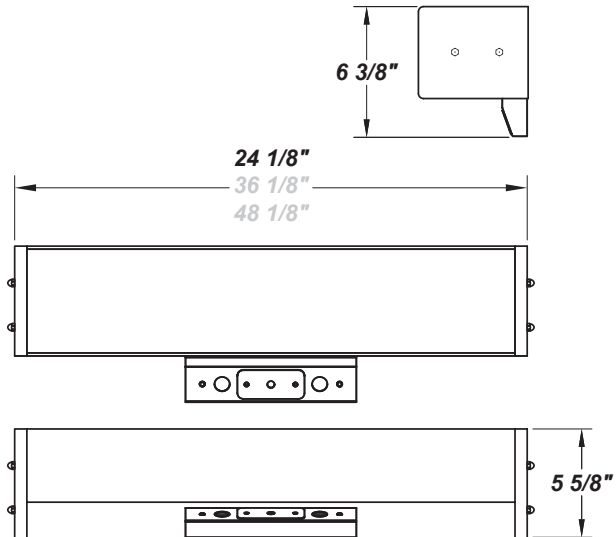
FEATURES

- [External Motion Sensor](#)
- Steel Housing w/ White Powder Coat Finish
- Steel Mounting Pan w/ Hi-Reflectance White Powder Coat Finish
- Steel End Caps w/ White Powder Coat Finish
- Clear Ribbed Acrylic Lens, Up / Down Lighting
- Mounts Directly to Surface w/ Two Wall Anchors (Not Included)
- Convenience Outlet Available
- Pull Chain Available
- IES Files Available
- CSA Listed Damp Location, Including All Options Except For EB
- Emergency Battery Available
- LED Light Fixture



LINE DRAWING

LINE DRAWING NOT TO SCALE

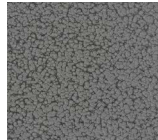


FINISHES

Antique Copper



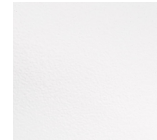
Antique Silver



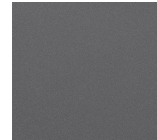
Bronze Mist



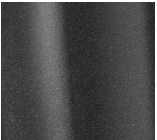
Gloss White



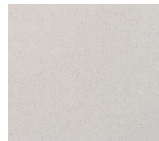
Matte Silver



Metallic Black



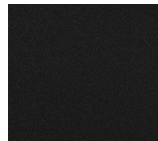
Sand



Swedish Steel



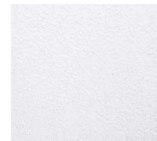
Textured Black



Textured Bronze



Textured White



For RAL Colors & Custom Match - Contact Teron Lighting Inc.

OVERLAND MSE LED 24"

Architectural Indoor



Fixture Core

PROJECT:	
TYPE:	
PO#:	QTY:
COMMENTS:	

PRODUCT CODE	SOURCE/WATTAGE	VOLTAGE	DIMMING DRIVER
OLD24 - Overland 24"	L34.7-TE950 - 40.0W @ 950mA ELV Dimming Driver** L38.3-ZE1050 - 42W @ 1050mA Line Voltage 4-Wire Dimming Driver (Dimmable 0 - 10V)	120V 277V (50 / 60Hz)	SD10 - 10/100% Bi-level Step Dimming SD25 - 25/100% Bi-level Step Dimming (120V / 277V Only) SD50 - 50/100% Bi-level Step Dimming (120V / 277V Only) MS2D - One LED Strip Connected at 100% Constant Output, and Other Strip Connected to Motion Sensor (Requires 2 Drivers)
ORDER INFO			
OLD24 Example ^	L34.7-TE950	120V	SD10

Aesthetics & Options

TRIM	FINISH	COLOR TEMP	OPTIONS
MSE	AC - Antique Copper AS - Antique Silver BT - Bronze Mist BN - Brushed Nickel SM - Matte Silver MB - Metallic Black SN - Sand SW - Swedish Steel TB - Textured Black BZ - Textured Bronze TW - Textured White WH - White (Standard)	30K - 3000K Color Temp 35K - 3500K Color Temp 40K - 4000K Color Temp	2SW - Dual Switch w/ Pull Chain* BFL - Front Baffle For Up / Down Lighting CO - Convenience Outlet* DIV - Internal Divider For Up/Down Lighting (Recommended For Use With MSW + 25W Option) DL - Downlight Only EB - Integral Emergency Battery (Not Available For SD10)** F - Fused MSW - Multi Switch w/ Pull Chain (120V Only) (For Up, Down, and Up / Down Light)* NLT - 5.1W LED Night Light**
ORDER INFO			
MSE Example ^	AC	30K	2SW

PROD	SOURCE	30K SPECS			
OLD 24"	L34.7	<ul style="list-style-type: none"> 30K - 3000K Color Temp 3647 LED Source Lumens 89.0 LED Source Lumens Per Watt 			
	L38.3	<ul style="list-style-type: none"> 30K - 3000K Color Temp 4025 LED Source Lumens 89.4 LED Source Lumens Per Watt 			

REPLACEMENT PART	PART NO	NOTES
24" Clear Acrylic (3 Lamp) Diffuser	30047	* Option is for 120V Only

Don't see the configuration you are looking for?
Call us today at (513) 858-6004



TERONLIGHTING.COM
33 DONALD DR, FAIRFIELD, OH 45014
P: 513.858.6004 F: 513.858.6038
E: SALES@TERONLIGHT.COM



We reserve the right to revise the design components of any product due to parts availability or change in UL standards, without assuming any obligation or liability to modify any products previously manufactured, and without notice.