

# OVERLAND LED 24"

Architectural Indoor



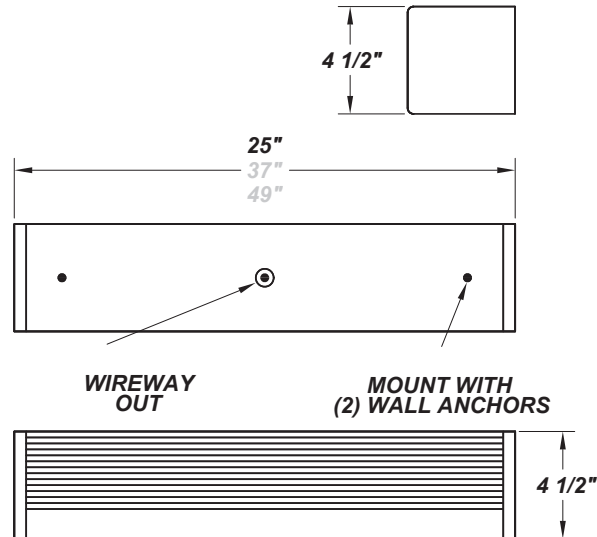
PROJECT:	
TYPE:	
PO#:	QTY:
COMMENTS:	

## FEATURES

- Steel Housing w/ White Powder Coat Finish
- Steel Mounting Pan w/ Hi-Reflectance White Powder Coat Finish
- Steel End Caps w/ White Powder Coat Finish
- Clear Ribbed Acrylic Lens
- Up / Down Lighting
- Mounts Directly to Surface w/ Two Wall Anchors (Not Included)
- Convenience Outlet Available
- Pull Chain Available
- IES Files Available
- CSA Listed Damp Location, Including All Options Except For EB
- Emergency Battery Available
- LED Light Fixture

## LINE DRAWING

LINE DRAWING NOT TO SCALE

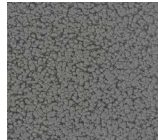


## FINISHES

Antique Copper



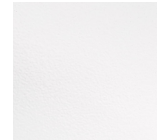
Antique Silver



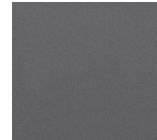
Bronze Mist



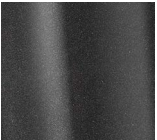
Gloss White



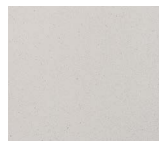
Matte Silver



Metallic Black



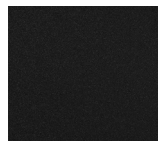
Sand



Swedish Steel



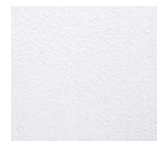
Textured Black



Textured Bronze



Textured White



For RAL Colors & Custom Match - Contact Teron Lighting Inc.

# OVERLAND LED 24"

Architectural Indoor



Fixture Core

PROJECT:	
TYPE:	
PO#:	QTY:
COMMENTS:	

PRODUCT CODE	SOURCE/WATTAGE	VOLTAGE	DIMMING DRIVER
<b>OLD24</b> - Overland 24"	<b>L34.7-TE950</b> - 40.0W @ 950mA ELV Dimming Driver** <b>L38.3-ZE1050</b> - 42W @ 1050mA Line Voltage 4-Wire Dimming Driver (Dimmable 0 - 10V)	<b>120V</b> <b>277V</b> (50 / 60Hz)	<b>Not Applicable</b>
ORDER INFO			
OLD24 Example ^	L34.7-TE950	120V	Not Applicable

Aesthetics & Options

TRIM	FINISH	COLOR TEMP	OPTIONS
<b>Not Applicable</b>	<b>AC</b> - Antique Copper <b>AS</b> - Antique Silver <b>BT</b> - Bronze Mist <b>BN</b> - Brushed Nickel <b>SM</b> - Matte Silver <b>MB</b> - Metallic Black <b>SN</b> - Sand <b>SW</b> - Swedish Steel <b>TB</b> - Textured Black <b>BZ</b> - Textured Bronze <b>TW</b> - Textured White <b>WH</b> - Gloss White (Standard)	<b>30K</b> - 3000K Color Temp <b>35K</b> - 3500K Color Temp <b>40K</b> - 4000K Color Temp	<b>2SW</b> - Dual Switch w/ Pull Chain* <b>BFL</b> - Front Baffle For Up / Down Lighting <b>CO</b> - Convenience Outlet* <b>EB</b> - Integral Emergency Battery (Not Available For SD10)** <b>F</b> - Fused <b>DIV</b> - Internal Divider For Up/Down Lighting (Recommended For Use With MSW + 25W Option) <b>DL</b> - Downlight Only, <b>MSW</b> - Multi Switch w/ Pull Chain (120V Only) (For Up, Down, and Up / Down Light) <b>NLT</b> - 5.1W LED Night Light**
ORDER INFO			
Not Applicable Example ^	AC	30K	2SW

PROD	SOURCE	30K SPECS				
<b>OLD 24"</b>	L34.7	<ul style="list-style-type: none"> <li>30K - 3000K Color Temp</li> <li>3647 LED Source Lumens</li> <li>89.0 LED Source Lumens Per Watt</li> </ul>				
	L38.3	<ul style="list-style-type: none"> <li>30K - 3000K Color Temp</li> <li>4025 LED Source Lumens</li> <li>89.4 LED Source Lumens Per Watt</li> </ul>				

REPLACEMENT PART	PART NO	NOTES
24" Clear Acrylic (3 Lamp) Diffuser	30047	* Option is for 120V Only

Don't see the configuration you are looking for?  
Call us today at (513) 858-6004



**TERONLIGHTING.COM**  
33 DONALD DR, FAIRFIELD, OH 45014  
P: 513.858.6004 F: 513.858.6038  
E: SALES@TERONLIGHT.COM



We reserve the right to revise the design components of any product due to parts availability or change in UL standards, without assuming any obligation or liability to modify any products previously manufactured, and without notice.