

# OASIS LED 48"

Architectural Indoor



PROJECT:	
TYPE:	
PO#:	QTY:
COMMENTS:	

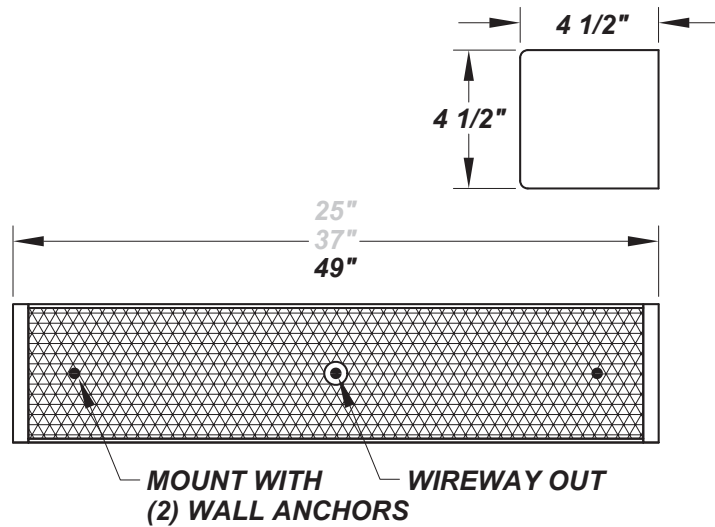
## FEATURES

- Steel Housing w/ White Powder Coat Finish
- Steel Mounting Pan w/ Hi-Reflectance White Powder Coat Finish
- Steel End Caps w/ White Powder Coat Finish
- Clear Acrylic Lens w/ Ribbed Sides and Prismatic Front
- Mounts Directly to Surface w/ Two Wall Anchors (Not Included)
- 0-10V and Leading Edge / Phase Dimming Compatible Options Available
- IES Files Available
- CSA Listed Damp Location
- Emergency Battery Available
- LED Light Fixture



## LINE DRAWING

LINE DRAWING NOT TO SCALE

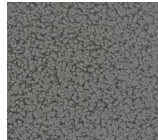


## FINISHES

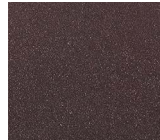
Antique Copper



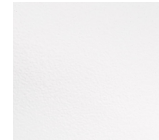
Antique Silver



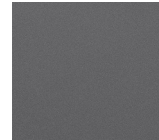
Bronze Mist



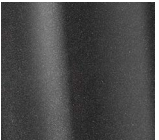
Gloss White



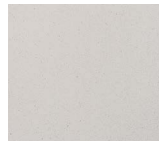
Matte Silver



Metallic Black



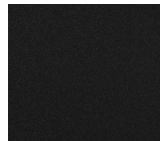
Sand



Swedish Steel



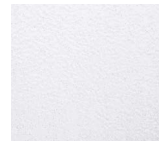
Textured Black



Textured Bronze



Textured White



For RAL Colors & Custom Match - Contact Teron Lighting Inc.

# OASIS LED 48"

Architectural Indoor



Fixture Core

PROJECT:	
TYPE:	
PO#:	QTY:
COMMENTS:	

PRODUCT CODE	SOURCE/WATTAGE	VOLTAGE	DIMMING DRIVER
OAS48 - Oasis 48"	<b>L69.4-LE1900</b> - 69.4W @ 1900mA Triac Dimming Driver <b>L69.4-ZE1900</b> - 69.4W @ 1900mA Line Voltage 4-Wire Dimming Driver (Dimmable 0 - 10V)	<b>120 - 277V</b> <b>347V</b> (50 / 60Hz)	Not Applicable
ORDER INFO			
OAS48 Example ^	L69.4-LE1900	120 - 277V	SD10

Aesthetics & Options

TRIM	FINISH	COLOR TEMP	OPTIONS
Not Applicable	<b>AC</b> - Antique Copper <b>TB</b> - Textured Black <b>AS</b> - Antique Silver <b>BT</b> - Bronze Mist <b>BZ</b> - Textured Bronze <b>BN</b> - Brushed Nickel <b>TW</b> - Textured White <b>SM</b> - Matte Silver <b>MB</b> - Metallic Black <b>WH</b> - Gloss White (Standard) <b>SN</b> - Sand <b>SW</b> - Swedish Steel	<b>27K</b> - 2700K Color Temp <b>30K</b> - 3000K Color Temp <b>35K</b> - 3500K Color Temp <b>40K</b> - 4000K Color Temp <b>50K</b> - 5000K Color Temp	<b>2SW</b> - 2-Position Switch w/ Pull Chain* <b>BFL</b> - Front Baffle For Up / Down Lighting <b>CH</b> - Chrome End Caps <b>CO</b> - Convenience Outlet* <b>EB</b> - Integral Emergency Battery** <b>F</b> - Fused** <b>MSW</b> - Multi-Level Switch w/ Pull Chain (120V Only) (For Multi-Directional Lighting)* <b>NLT</b> - 5.1W LED Night Light** <b>SP</b> - Surge Protector
ORDER INFO			
MSE Example ^	AC	27K	2SW

PROD	SOURCE	30K SPECS			
OAS 48"	L69.4	<ul style="list-style-type: none"> <li>30K - 3000K Color Temp</li> <li>8028 LED Source Lumens</li> <li>100.4 LED Source Lumens Per Watt</li> </ul>			

REPLACEMENT PART	PART NO	NOTES
48" Clear Acrylic Diffuser	30904	* Option is for 120V Only ** Option is for 120 or 277V Only

Don't see the configuration you are looking for?  
Call us today at (513) 858-6004



**TERONLIGHTING.COM**  
 33 DONALD DR, FAIRFIELD, OH 45014  
 P: 513.858.6004 F: 513.858.6038  
 E: SALES@TERONLIGHT.COM



We reserve the right to revise the design components of any product due to parts availability or change in UL standards, without assuming any obligation or liability to modify any products previously manufactured, and without notice.