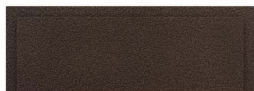


# ESQUIRE W LED

Architectural Outdoor



|           |      |
|-----------|------|
| PROJECT:  |      |
| TYPE:     |      |
| PO#:      | QTY: |
| COMMENTS: |      |

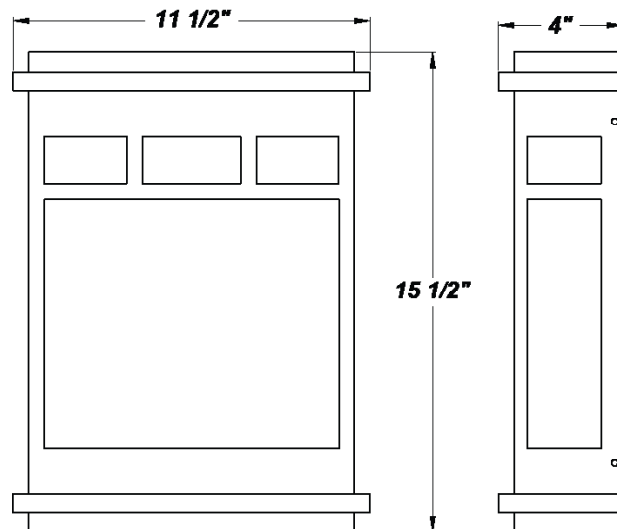


## FEATURES

- Steel Housing w/ Textured Black Polyester Powder Coat Finish
- Aluminum Heat-Sink Plate
- Solid Top and Bottom End Plates
- Luminous White Acrylic Panels
- 100V - 277V
- Mounts Directly to 4" Junction Box (By Others)
- ADA Compliant
- CSA Listed Wet Location
- Emergency Battery Available
- LED Light Fixture
- Mounting Hardware Included

## LINE DRAWING

LINE DRAWING NOT TO SCALE

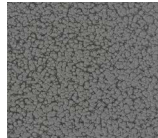


## FINISHES

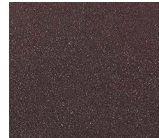
Antique Copper



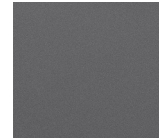
Antique Silver



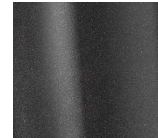
Bronze Mist



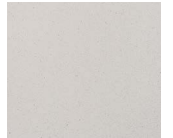
Matte Silver



Metallic Black



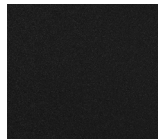
Sand



Swedish Steel



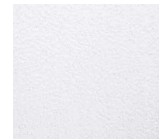
Textured Black



Textured Bronze



Textured White



For RAL Colors & Custom Match - Contact Teron Lighting Inc.

# ESQUIRE W LED

Architectural Outdoor



Fixture Core

|           |      |
|-----------|------|
| PROJECT:  |      |
| TYPE:     |      |
| PO#:      | QTY: |
| COMMENTS: |      |

| PRODUCT CODE     | SOURCE/WATTAGE  | VOLTAGE     | DIMMING DRIVER |
|------------------|---|-------------|----------------|
| ESQW - Esquire W | L19.0-ZE600 - 19W @ 600mA<br>4-Wire 0-10V Dimming Driver<br><br>L37.0-ZE1100 - 37W @<br>1100mA 4-Wire 0-10V<br>Dimming Driver | 120V - 277V | Not Applicable |
| ORDER INFO       |   |             |                |
| ESQW             | L19.0-ZE600   | 120V - 277V | Not Applicable |

Example ^ (may not represent a manufacturable product)

Aesthetics & Options

| TRIM           | FINISH   | COLOR TEMP   | OPTIONS  |
|----------------|--|--|--|
| Not Applicable | AC - Antique Copper<br>AS - Antique Silver<br>BT - Bronze Mist<br>SM - Matte Silver<br>MB - Metallic Black<br>SN - Sand<br>SW - Swedish Steel<br>TB - Textured Black (Standard)<br>BZ - Textured Bronze<br>TW - Textured White | 27K - 2700K Color Temp<br>30K - 3000K Color Temp<br>35K - 3500K Color Temp<br>40K - 4000K Color Temp<br>50K - 5000K Color Temp | EBC - Iota ILB-CP12-B Integral 12W LED Driver (Available For L19.0 Only) (Please Specify Voltage)<br>EBW - Bodine BSL26 - Up To 5.1W Emergency Illumination w/ LEDs (Available For L37.0 Only) (Please Specify Voltage)<br>F - Fused<br>TP - Tamper-Proof Screws<br>WAL - White Acrylic (Standard) |
| ORDER INFO     |  |  |  |
| Not Applicable | AC   | 27K  | EBC  |

Example ^ (may not represent a manufacturable product)

| PROD | SOURCE | 30K SPECS   |  |  |  |  |
|------|--------|---|--|--|--|--|
| ESQW | L19.0  | <ul style="list-style-type: none"> <li>80 CRI Typ.</li> <li>30K - 3000K Color Temp</li> <li>2980 LED Source Lumens</li> <li>156.8 LED Source Lumens Per Watt</li> </ul> |  |  |  |  |
|      | L37.0  | <ul style="list-style-type: none"> <li>80 CRI Typ.</li> <li>30K - 3000K Color Temp</li> <li>3835 LED Source Lumens</li> <li>103.6 LED Source Lumens Per Watt</li> </ul> |  |  |  |  |

| REPLACEMENT PART             | PART NO | NOTES |
|------------------------------|---------|-------|
| White Acrylic Lens Panel Set | 9800660 |       |

Don't see the configuration you are looking for?  
Call us today at (513) 858-6004



TERONLIGHTING.COM  
33 DONALD DR, FAIRFIELD, OH 45014  
P: 513.858.6004 F: 513.858.6038  
E: SALES@TERONLIGHT.COM



We reserve the right to revise the design components of any product due to parts availability or change in UL standards, without assuming any obligation or liability to modify any products previously manufactured, and without notice.