

O'MEARA LED

Architectural Indoor



PROJECT:	
TYPE:	
PO#:	QTY:
COMMENTS:	

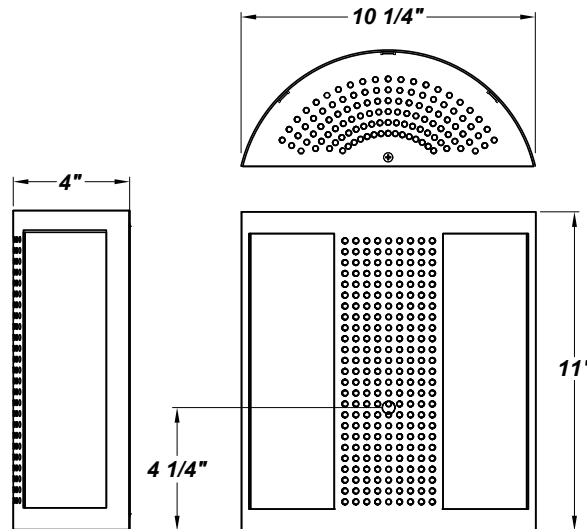


FEATURES

- Steel Housing w/ Matte Silver Powder Coat Finish
- Steel Mounting Pan w/ Hi-Reflectance White Powder Coat Finish
- Steel Perforated Top and Bottom Covers w/ Matte Silver Powder Coat Finish
- Matte White Acrylic Diffuser
- Mounts Directly to 4" Junction Box (By Others)
- 120V Drivers Are Dimmable With Either Triac or Electronic Dimmers
- 277V Drivers Are Not Dimmable
- ADA Compliant
- CSA Listed Dry Location For Wall Mounting
- LED Light Fixture
- Mounting Hardware Included

LINE DRAWING

LINE DRAWING NOT TO SCALE

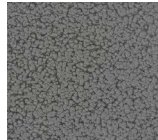


FINISHES

Antique Copper



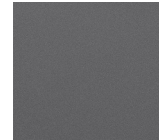
Antique Silver



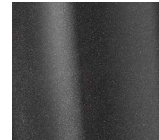
Bronze Mist



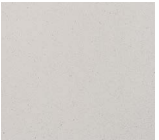
Matte Silver



Metallic Black



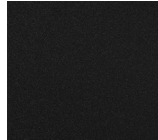
Sand



Swedish Steel



Textured Black



Textured Bronze



Textured White



For RAL Colors & Custom Match - Contact Teron Lighting Inc.

O'MEARA LED

Architectural Indoor



Fixture Core

PROJECT:	
TYPE:	
PO#:	QTY:
COMMENTS:	

PRODUCT CODE	SOURCE/WATTAGE	VOLTAGE	DIMMING DRIVER
OA - O'Meara	L12.5 - (1) 12.5W (40) LED Module L25.0 - (2) 12.5W (40) LED Modules	120 277V (50 / 60Hz)	Not Applicable
ORDER INFO			
OA Example ^	L12.5	120	Not Applicable

Aesthetics & Options

TRIM	FINISH	COLOR TEMP	OPTIONS
Not Applicable	AC - Antique Copper AS - Antique Silver BT - Bronze Mist BN - Brushed Nickel SM - Matte Silver (Standard) MB - Metallic Black SN - Sand SW - Swedish Steel TB - Textured Black BZ - Textured Bronze TW - Textured White	30K - 3000K Color Temp 35K - 3500K Color Temp 40K - 4000K Color Temp	F - Fused
ORDER INFO			
Not Applicable Example ^	AC	30K	F

PROD	SOURCE	30K SPECS				
OA	L12.5	<ul style="list-style-type: none"> 80 CRI Typ. 30K - 3000K Color Temp 1615 LED Source Lumens 129.2 LED Source Lumens Per Watt 				
	L25.0	<ul style="list-style-type: none"> 80 CRI Typ. 30K - 3000K Color Temp 3230 LED Source Lumens 129.2 LED Source Lumens Per Watt 				

REPLACEMENT PART	PART NO	NOTES
White Acrylic Lens	3018760	
		Don't see the configuration you are looking for? Call us today at (513) 858-6004



TERONLIGHTING.COM
33 DONALD DR, FAIRFIELD, OH 45014
P: 513.858.6004 F: 513.858.6038
E: SALES@TERONLIGHT.COM



We reserve the right to revise the design components of any product due to parts availability or change in UL standards, without assuming any obligation or liability to modify any products previously manufactured, and without notice.