

POLARIS SM LED

Architectural Outdoor

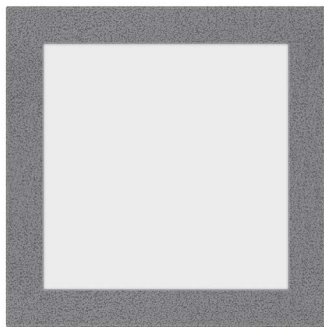


PROJECT:	
TYPE:	
PO#:	QTY:
COMMENTS:	



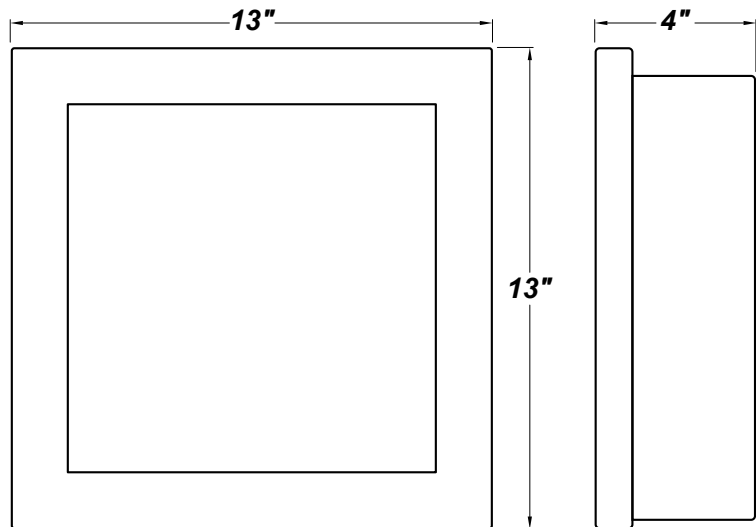
FEATURES

- Aluminum Housing w/ Textured Black Polyester Powder Coat Finish
- White Acrylic Front Lens Panel
- Aluminum Fascia w/ Textured Black Polyester Powder Coat Finish
- Mounts Directly to 4" Junction Box (By Others)
- J-Box Centered in Fixture
- ADA Compliant
- CSA Listed Wet Location For Wall or Ceiling Mount
- LED Light Fixture
- Mounting Hardware Included



LINE DRAWING

LINE DRAWING NOT TO SCALE

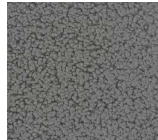


FINISHES

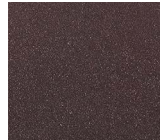
Antique Copper



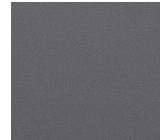
Antique Silver



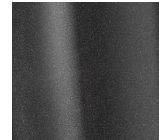
Bronze Mist



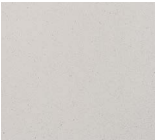
Matte Silver



Metallic Black



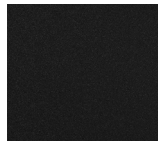
Sand



Swedish Steel



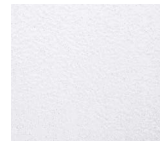
Textured Black



Textured Bronze



Textured White



For RAL Colors & Custom Match - Contact Teron Lighting Inc.

POLARIS SM LED

Architectural Outdoor



Fixture Core

PROJECT:	
TYPE:	
PO#:	QTY:
COMMENTS:	

PRODUCT CODE	SOURCE/WATTAGE	VOLTAGE	DIMMING DRIVER
PLSM - Polaris SM	L13.0 - (48) LED Array	0-10V	Not Applicable
ORDER INFO			
PLSM	L13.0	0-10V	Not Applicable

Example ^ (may not represent a manufacturable product)

Aesthetics & Options

TRIM	FINISH	COLOR TEMP	OPTIONS
Not Applicable	AC - Antique Copper AS - Antique Silver BT - Bronze Mist SM - Matte Silver MB - Metallic Black (Standard) SN - Sand SW - Swedish Steel TB - Textured Black BZ - Textured Bronze TW - Textured White	27K - 2700K Color Temp 30K - 3000K Color Temp 35K - 3500K Color Temp 40K - 4000K Color Temp	Not Applicable
ORDER INFO			
Not Applicable	AC	27K	Not Applicable

Example ^ (may not represent a manufacturable product)

PROD	SOURCE	30K SPECS				
PLSM	L13.0	<ul style="list-style-type: none"> 30K - 3000K Color Temp 1700 LED Source Lumens 105 LED Source Lumens Per Watt 				

REPLACEMENT PART	PART NO	NOTES
White Acrylic Diffuser	3072960	L70 > 100,000 Hours

Don't see the configuration you are looking for?
Call us today at (513) 858-6004



TERONLIGHTING.COM
 33 DONALD DR, FAIRFIELD, OH 45014
 P: 513.858.6004 F: 513.858.6038
 E: SALES@TERONLIGHT.COM



We reserve the right to revise the design components of any product due to parts availability or change in UL standards, without assuming any obligation or liability to modify any products previously manufactured, and without notice.