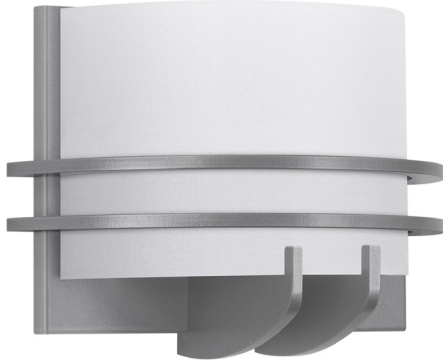


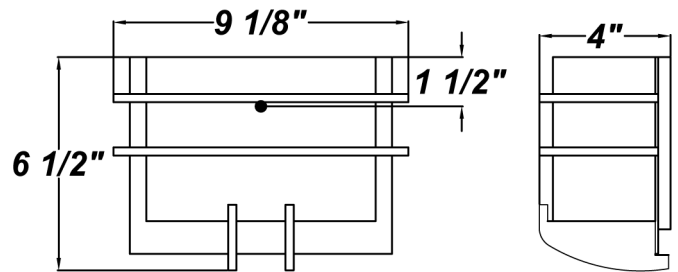
**LANDMARK M LED**



PROJECT :
TYPE :
ORDERING # :
COMMENTS :

**FEATURES**

- Steel Trim Accents w/ Matte Silver Powder Coat Finish
- Luminous White Acrylic Diffuser
- Aluminum Mounting Pan & Reflector
- Open Top & Bottom
- Mounts Directly to 4" Junction Box (By Others)
- Mounting Hardware Included
- ADA Compliant
- CSA Listed Dry Location For Wall Mounting



**ORDERING INFORMATION**

Example : (LNDM - L11.5 - 277V - 350mA - WAL - AC - 35K) Matte Silver is Standard Finish

PRODUCT	SOURCE/WATTAGE	VOLTAGE	DRIVER OPTIONS	DIFFUSER	FINISH	OPTIONS
Landmark M (LNDM) (6 1/2" Fixture)	L11.5 - (2) 5.8W (11) LED Strips - Constant Current @350mA - 11.5 Input Watts	120V - 120V 277V - 277V  (50 / 60Hz)	350mA - 350mA Constant Current Driver (For L11.5W)  (Non-Dimmable)	WAL - White Acrylic	SM - Matte Silver TB - Textured Black AC - Antique Copper AS - Antique Silver BT - Bronze Mist SN - Sand SW - Swedish Steel BZ - Textured Bronze TW - Textured White MB - Metallic Black  RAL Colors or Custom Match - Consult Factory	27K - 2700K Color Temperature 30K - 3000K Color Temperature 35K - 3500K Color Temperature 40K - 4000K Color Temperature F - Fused

**NOTES**

We reserve the right to revise the design or components of any product due to parts availability or change in UL standards, without assuming any obligation or liability to modify any products previously manufactured, and without notice.

REPLACEMENT PARTS	PART NO.
White Acrylic Diffuser For 6" Fixture	3033660

SOURCE/WATTAGE	30K SPECIFICATIONS
L11.5 - (2) 5.8W (11) LED Strips - Constant Current @350mA - 11.5 Input Watts	<b>11.5W LED ARRAY</b> 30K - 3000K Color Temp.  - 80 CRI Typ. - 1740 LED Source Lumens - 151.3 LED Source Lumens Per Watt
50,000 Hours(L70)	

