

# BISCAYNE N HCB 49"

Architectural Indoor



|           |      |
|-----------|------|
| PROJECT:  |      |
| TYPE:     |      |
| PO#:      | QTY: |
| COMMENTS: |      |



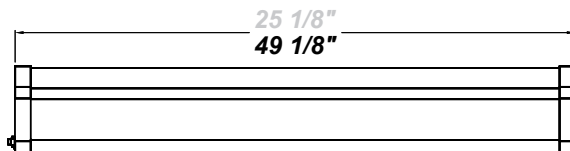
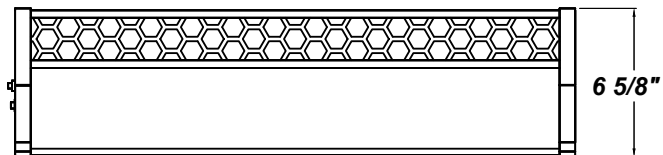
## FEATURES

- Steel Housing and End Caps w/ Matte Silver Powder Coat Finish
- High Impact Frosted Acrylic Diffuser
- Steel Reflector Plate w/ Hi-Reflectance White Powder Coat Finish
- Mounts Directly to Wall or Ceiling w/ Four Wall Anchors (Not Included)
- ADA Compliant
- CSA Listed Damp Location
- Emergency Battery Available
- Vandal Resistant



## LINE DRAWING

LINE DRAWING NOT TO SCALE

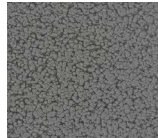


## FINISHES

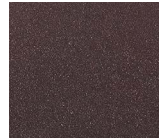
Antique Copper



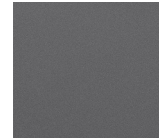
Antique Silver



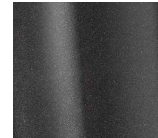
Bronze Mist



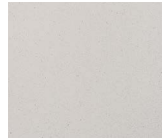
Matte Silver



Metallic Black



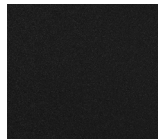
Sand



Swedish Steel



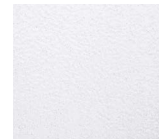
Textured Black



Textured Bronze



Textured White



For RAL Colors & Custom Match - Contact Teron Lighting Inc.



# BISCAYNE N HCB 49"

Architectural Indoor



Fixture Core

|           |      |
|-----------|------|
| PROJECT:  |      |
| TYPE:     |      |
| PO#:      | QTY: |
| COMMENTS: |      |

| PRODUCT CODE            | SOURCE/WATTAGE   | VOLTAGE      | DIMMING BALLAST |
|-------------------------|--|--------------|-----------------|
| BSCN48 - Biscayne N 49" | 232E - (2) 32W T8<br>228E - (2) 28W T5<br>254E-HO - (2) 54W T5 HO<br>(High-Output) | 120V<br>277V | Not Applicable  |
| ORDER INFO              |  |              |                 |
| BSCN48                  | 232E   | 120V         | Not Applicable  |

Example ^ (may not represent a manufacturable product)

Aesthetics & Options

| TRIM       | FINISH   | COLOR TEMP     | OPTIONS   |
|------------|--|----------------|---|
| HCB        | AC - Antique Copper<br>AS - Antique Silver<br>BT - Bronze Mist<br>SM - Matte Silver (Standard)<br>MB - Metallic Black<br>SN - Sand<br>SW - Swedish Steel<br>TB - Textured Black<br>BZ - Textured Bronze<br>TW - Textured White | Not Applicable | DIM - Dimming Ballast<br>(232E & 228E Only)<br>EBR - Remote Mount Battery<br>(Field Installed)<br>F - Fused<br>TP - Tamper Resistant Screws |
| ORDER INFO |  |                |   |
| HCB        | AC   | Not Applicable | DIM   |

Example ^ (may not represent a manufacturable product)

| REPLACEMENT PART               | PART NO | NOTES |
|--------------------------------|---------|-------|
| Frosted 4' Acrylic Diffuser    | 3001562 |       |
| White 4' Acrylic Lens Assembly | 38113   |       |

Don't see the configuration you are looking for?  
Call us today at (513) 858-6004



TERONLIGHTING.COM  
33 DONALD DR, FAIRFIELD, OH 45014  
P: 513.858.6004 F: 513.858.6038  
E: SALES@TERONLIGHT.COM



We reserve the right to revise the design components of any product due to parts availability or change in UL standards, without assuming any obligation or liability to modify any products previously manufactured, and without notice.