

# VICEROY LG HRS LED 36"

Architectural Indoor



|           |      |
|-----------|------|
| PROJECT:  |      |
| TYPE:     |      |
| PO#:      | QTY: |
| COMMENTS: |      |



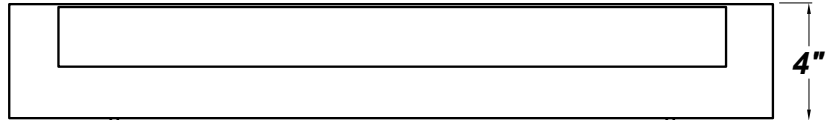
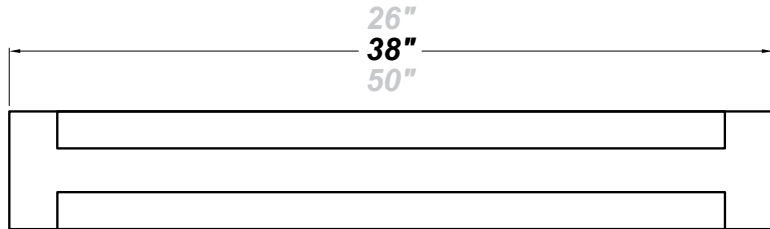
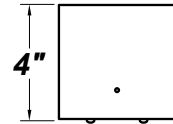
## FEATURES

- Steel Housing with Matte Silver Powder Coat Finish
- Matte White Acrylic Inner Diffuser
- Clear Acrylic Outer Diffuser
- 0-10V and Trailing Edge (ELV) Dimming Compatible Options Available
- Over-Voltage, Over-Current, and Short-Circuit Protection with Auto Recovery
- Mounts Directly to Surface with Two Wall Anchors (Not Included) Over a 2" Junction Box (Not Included)
- L70 Life Time For 50,000hr
- Knockouts on Back Accept Standard Electrical Fittings (By Others)
- ADA Compliant
- CSA Listed Damp Location For Wall or Ceiling Mount
- Emergency Battery Available
- LED Light Fixture



## LINE DRAWING

LINE DRAWING NOT TO SCALE

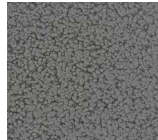


## FINISHES

Antique Copper



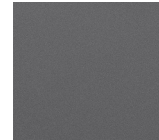
Antique Silver



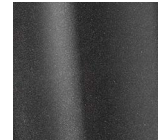
Bronze Mist



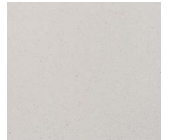
Matte Silver



Metallic Black



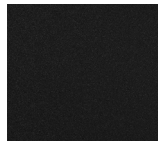
Sand



Swedish Steel



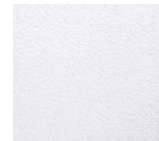
Textured Black



Textured Bronze



Textured White



For RAL Colors & Custom Match - Contact Teron Lighting Inc.

# VICEROY LG HRS LED 36"

Architectural Indoor



Fixture Core

|           |      |
|-----------|------|
| PROJECT:  |      |
| TYPE:     |      |
| PO#:      | QTY: |
| COMMENTS: |      |

| PRODUCT CODE            | SOURCE/WATTAGE   | VOLTAGE          | DIMMING DRIVER |
|-------------------------|--|------------------|----------------|
| VCYL36 - Viceroy LG 36" | L27.2-ZE800 - 38.3W LED Strip(s) @ 800mA Line Voltage 4-Wire Dimming Driver (Dimmable 0 - 10V) | 120-277V<br>347V | Not Applicable |
| ORDER INFO              |  |                  |                |
| VCYL36<br>Example ^     | L27.2-ZE800  | 120-277V         | Not Applicable |

Aesthetics & Options

| TRIM             | FINISH   | COLOR TEMP  | OPTIONS   |
|------------------|--|---|---|
| HRS              | <b>AC</b> - Antique Copper<br><b>AS</b> - Antique Silver<br><b>BT</b> - Bronze Mist<br><b>BZ</b> - Textured Bronze<br><b>SM</b> - Matte Silver (Standard)<br><b>MB</b> - Metallic Black<br><b>SN</b> - Sand<br><b>SW</b> - Swedish Steel<br><b>TB</b> - Textured Black<br><b>TW</b> - Textured White | <b>50K</b> - 5000K Color Temp<br><b>40K</b> - 4000K Color Temp<br><b>35K</b> - 3500K Color Temp<br><b>30K</b> - 3000K Color Temp<br><b>27K</b> - 2700K Color Temp | <b>EB</b> - Integral Emergency Battery (120V - 277V Only)<br><b>EBR</b> - Remote Mount Battery (Field Installed)<br><b>F</b> - Fused (120V / 277V Only)<br><b>JBC</b> - Junction Box Cover<br><b>TP</b> - Tamper Resistant Screws |
| ORDER INFO       |  |   |   |
| HRS<br>Example ^ | AC   | 50K   | EB  |

| PROD   | SOURCE | 30K SPECS  |  |  |  |
|--------|--------|--|--|--|--|
| VCYL36 | L27.2  | <ul style="list-style-type: none"> <li>30K - 3000K Color Temp</li> <li>3976 LED Source Lumens</li> <li>146.2 LED Source Lumens Per Watt</li> </ul> |  |  |  |

| REPLACEMENT PART | PART NO | NOTES |
|------------------|---------|-------|
| 3' Lens Assembly | 38097   |       |

Don't see the configuration you are looking for?  
Call us today at (513) 858-6004



TERONLIGHTING.COM  
 33 DONALD DR, FAIRFIELD, OH 45014  
 P: 513.858.6004 F: 513.858.6038  
 E: SALES@TERONLIGHT.COM



We reserve the right to revise the design components of any product due to parts availability or change in UL standards, without assuming any obligation or liability to modify any products previously manufactured, and without notice.