

OVERLAND MSI LED 48"

Architectural Indoor



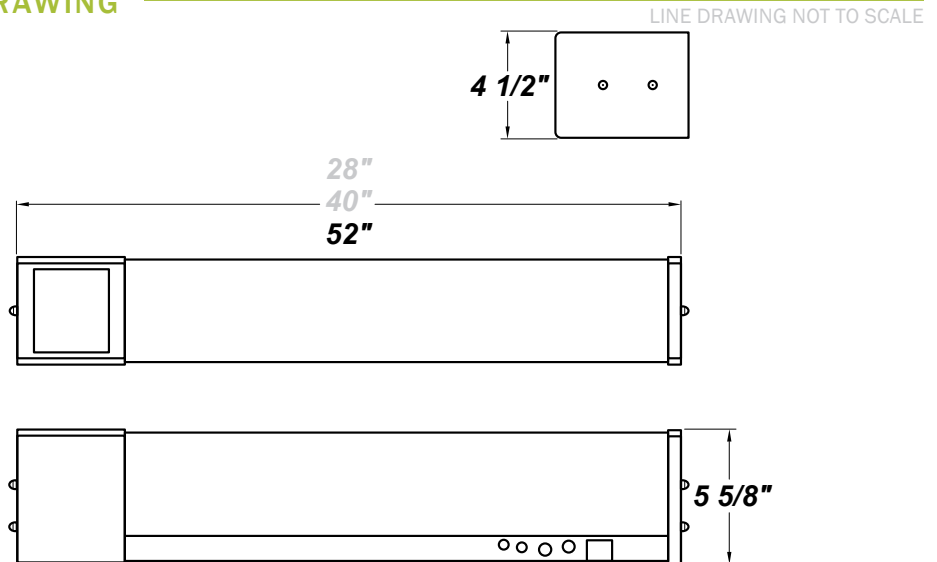
PROJECT:	
TYPE:	
PO#:	QTY:
COMMENTS:	



FEATURES

- [Internal Motion Sensor](#)
- Steel Housing w/ White Powder Coat Finish
- Steel Mounting Pan w/ Hi-Reflectance White Powder Coat Finish
- Steel End Caps w/ White Powder Coat Finish
- Clear Ribbed Acrylic Lens, Up / Down Lighting
- Mounts Directly to Surface w/ Two Wall Anchors (Not Included)
- Convenience Outlet Available
- Pull Chain Available
- IES Files Available
- CSA Listed Damp Location, Including All Options Except For EB
- Emergency Battery Available
- LED Light Fixture

LINE DRAWING

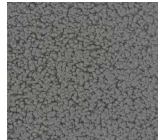


FINISHES

Antique Copper



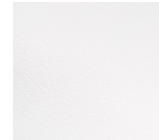
Antique Silver



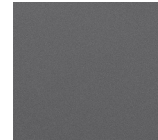
Bronze Mist



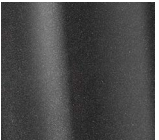
Gloss White



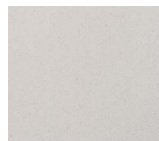
Matte Silver



Metallic Black



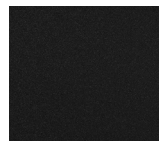
Sand



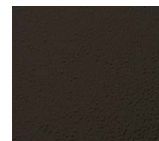
Swedish Steel



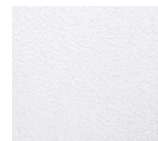
Textured Black



Textured Bronze



Textured White



For RAL Colors & Custom Match - Contact Teron Lighting Inc.

OVERLAND MSI LED 48"

Architectural Indoor



Fixture Core

PROJECT:	
TYPE:	
PO#:	QTY:
COMMENTS:	

PRODUCT CODE	SOURCE/WATTAGE	VOLTAGE	DIMMING DRIVER
OLD48 - Overland 48"	L69.4-LT1900 - 69.4W @ 1900mA Triac and ELV Dimming Driver** L69.4-ZE1900 - 69.4W @ 1900mA Line Voltage 4-Wire Dimming Driver (Dimmable 0 - 10V)	120V 277V (50 / 60Hz)	SD25 - 25/100% Bi-level Step Dimming (120V / 277V Only) SD50 - 50/100% Bi-level Step Dimming (120V / 277V Only)
ORDER INFO			
OLD48 Example ^	L69.4-LT1900	120V	SD25

Aesthetics & Options

TRIM	FINISH	COLOR TEMP	OPTIONS
MSI	AC - Antique Copper AS - Antique Silver BT - Bronze Mist BN - Brushed Nickel SM - Matte Silver MB - Metallic Black SN - Sand SW - Swedish Steel TB - Textured Black BZ - Textured Bronze TW - Textured White WH - Gloss White (Standard)	30K - 3000K Color Temp 35K - 3500K Color Temp 40K - 4000K Color Temp	2SW - Dual Switch w/ Pull Chain* BFL - Front Baffle For Up / Down Lighting CO - Convenience Outlet* EB - Integral Emergency Battery (Not Available For SD10)** F - Fused DIV - Internal Divider For Up/Down Lighting (Recommended For Use With MSW + 25W Option) DL - Downlight Only, MSW - Multi Switch w/ Pull Chain (120V Only) (For Up, Down, and Up / Down Light)* NLT - 5.1W LED Night Light**
ORDER INFO			
MSI Example ^	AC	30K	2SW

PROD	SOURCE	30K SPECS				
OLD 48"	L69.4	<ul style="list-style-type: none"> • 30K - 3000K Color Temp • 8028 LED Source Lumens • 100.4 LED Source Lumens Per Watt 				

REPLACEMENT PART	PART NO	NOTES
48" Clear Acrylic (2 Lamp) Diffuser	30904	* Option is for 120V Only
48" Clear Acrylic (3 Lamp) Diffuser	30049	

Don't see the configuration you are looking for?
Call us today at (513) 858-6004



TERONLIGHTING.COM
 33 DONALD DR, FAIRFIELD, OH 45014
 P: 513.858.6004 F: 513.858.6038
 E: SALES@TERONLIGHT.COM



We reserve the right to revise the design components of any product due to parts availability or change in UL standards, without assuming any obligation or liability to modify any products previously manufactured, and without notice.