

# BIRDIE CA EYE LED

Architectural Outdoor



PROJECT:

TYPE:

PO#:

QTY:

COMMENTS:

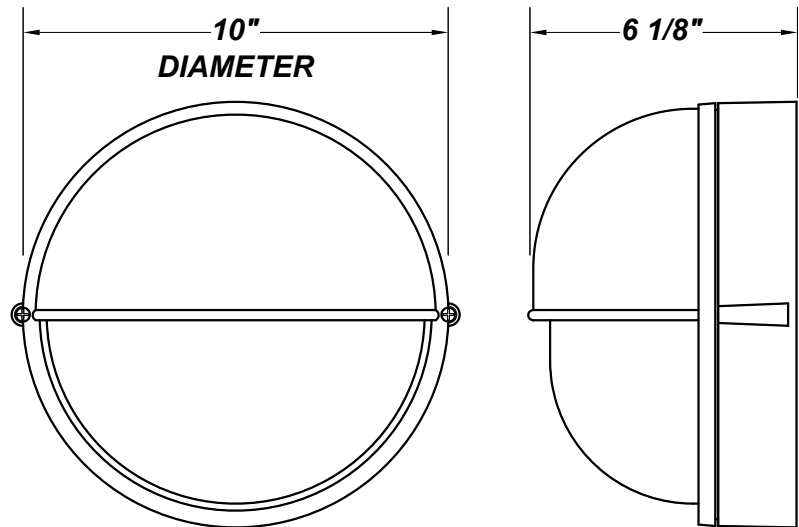


## FEATURES

- CSA Listed Wet Location
- Die-Cast Aluminum Grill (Standard) w/ Matte White Polyester Powder Coat Finish
- Die-Cast Aluminum Housing w/ Matte White Polyester Powder Coat Finish
- Emergency Battery Available (Damp Location Only) (Wall Mount Only)
- Front and Back Gasketing
- LED Light Fixture
- Mounting Hardware Included
- Mounts Directly to 4" Junction Box (By Others)
- Stainless Steel Housing Screws
- Vandal Resistant
- White Polycarbonate Lens

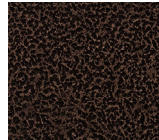
## LINE DRAWING

LINE DRAWING NOT TO SCALE

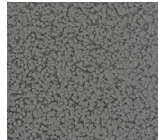


## FINISHES

Antique  
Copper



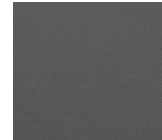
Antique  
Silver



Bronze  
Mist



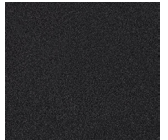
Matte  
Silver



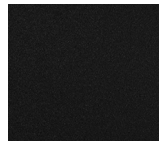
Sand



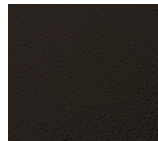
Swedish  
Steel



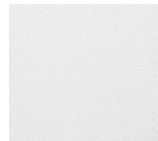
Textured  
Black



Textured  
Bronze



Textured  
White



For RAL Colors  
& Custom  
Match -  
Contact Teron  
Lighting Inc.

## Architectural Outdoor



QTY:

PRODUCT CODE	SOURCE/WATTAGE	VOLTAGE	DIMMING DRIVER
BEC - Birdie CA	L13.0-LE350 - 13W @ 350mA Phase Dimming Driver (Dimmable @ 120V Only) (Dimmable to 10%)  L13.0-350 - 13W @ 350mA - 350mA Constant Current Driver	120V 277V (50 / 60Hz)	Not Applicable
ORDER INFO			

BEC	L13.0-LE350	120V	Not Applicable
-----	-------------	------	----------------

TRIM	FINISH	COLOR TEMP	OPTIONS
EYE	AC - Antique Copper AS - Antique Silver BT - Bronze Mist SM - Matte Silver SN - Sand SW - Swedish Steel TB - Textured Black	BZ - Textured Bronze TW - Textured White WH - Matte White (Standard)	EB - 5.0W Integral EM Battery (Wall Mount Only) PCL - Photocell SP - Surge Protector TP - Tamper Resistant Screws
ORDER INFO			

EYE	AC	30K	EB
-----	----	-----	----

PROD	SOURCE	30K SPECS				
BEC	L13.0	<ul style="list-style-type: none"><li>• 30K - 3000K Color Temp</li><li>• 1614 LED Source Lumens</li><li>• 80.7 LED Source Lumens Per Watt</li></ul>				

Don't see the configuration you are looking for?  
Call us today at (513) 858-6004

