

CORNERSTONE MINI LED

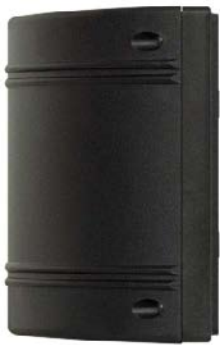
Architectural Outdoor



PROJECT:	
TYPE:	
PO#:	QTY:
COMMENTS:	

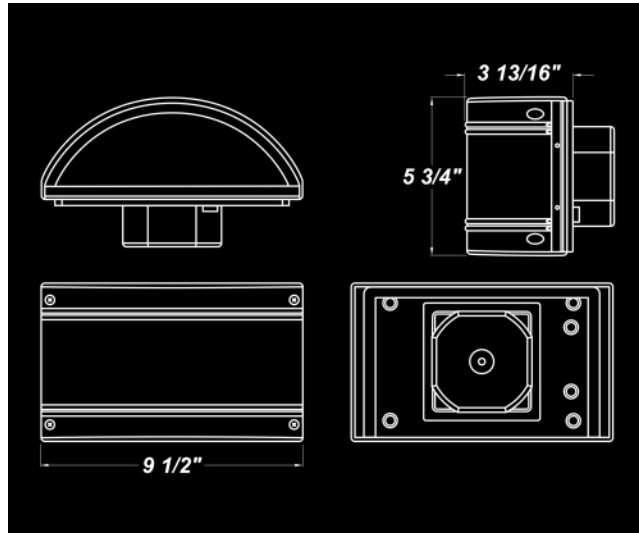
FEATURES

- ADA Compliant
- Aluminum Mounting Plate Mounts to Wall Surface (Centered Over And Attached to J-box)
- CSA Listed Wet Location For Wall Mounting
- Clear Polycarbonate Lenses
- Die-Cast Aluminum Housing w/ Textured Black Polyester Powder Coat Finish
- LED Light Fixture
- Surge Protector



LINE DRAWING

LINE DRAWING NOT TO SCALE

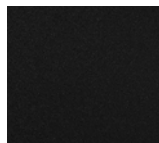


FINISHES

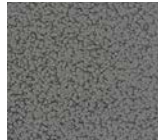
Antique Copper



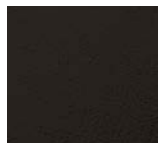
Textured Black



Antique Silver



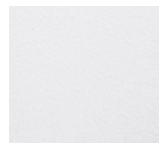
Textured Bronze



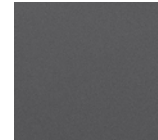
Bronze Mist



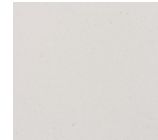
Textured White



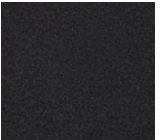
Matte Silver



Sand



Swedish Steel



For RAL Colors & Custom Match - Contact Teron Lighting Inc.

CORNERSTONE MINI LED

Architectural Outdoor



Fixture Core

PROJECT:	
TYPE:	
PO#:	QTY:
COMMENTS:	

PRODUCT CODE	SOURCE/WATTAGE	VOLTAGE	DIMMING DRIVER
CRNM - Cornerstone MINI	L212.3-12CV - 32W @ 12V Constant Voltage Non-Dimming Driver L112.3-12CV-DL - 19W @ 12V Constant Voltage Non-Dimming Driver Downlight L112.3-12CV-UL - 19W @ 12V Constant Voltage Non-Dimming Driver Uplight	120 - 277V (50 / 60Hz)	Not Applicable
ORDER INFO			
CRNM	L212.3-12CV	120 - 277V	Not Applicable

Example ^ (may not represent a manufacturable product)

Aesthetics & Options

TRIM	FINISH	COLOR TEMP	OPTIONS
Not Applicable	AC - Antique Copper TB - Textured Black (Standard) AS - Antique Silver BT - Bronze Mist BZ - Textured Bronze SM - Matte Silver SN - Sand TW - Textured White SW - Swedish Steel	27K - 2700K Color Temp 30K - 3000K Color Temp 35K - 3500K Color Temp 40K - 4000K Color Temp 50K - 5000K Color Temp	CPL - Clear Polycarbonate Lens (Standard) F - Fused FAL - Frosted Acrylic Lens TP - Tamper Resistant Screws
ORDER INFO			
Not Applicable	AC	27K	CPL

Example ^ (may not represent a manufacturable product)

PROD	SOURCE	30K SPECS				
CRNM	L212.3	<ul style="list-style-type: none"> 30K - 3000K Color Temp 2528 LED Source Lumens (1264 Per Side) 79 LED Source Lumens Per Watt 				
	L112.3	<ul style="list-style-type: none"> 30K - 3000K Color Temp 1264 LED Source Lumens (1264 Per Side) 66.5 LED Source Lumens Per Watt 				

REPLACEMENT PART	PART NO	NOTES
Clear Polycarbonate Lens	34105	*Leading and Trailing Edge Drivers are dimmable @120V Only
Frosted Acrylic Lens	3056462	*Constant Voltage Drivers are non dimmable

Don't see the configuration you are looking for?
Call us today at (513) 858-6004



TERONLIGHTING.COM
 33 DONALD DR, FAIRFIELD, OH 45014
 P: 513.858.6004 F: 513.858.6038
 E: SALES@TERONLIGHT.COM



We reserve the right to revise the design components of any product due to parts availability or change in UL standards, without assuming any obligation or liability to modify any products previously manufactured, and without notice.

CORNERSTONE MINI LED

Architectural Outdoor



Fixture Core

PROJECT:	
TYPE:	
PO#:	QTY:
COMMENTS:	

PRODUCT CODE	SOURCE/WATTAGE	VOLTAGE	DIMMING DRIVER
CRNM - Cornerstone MINI	L114.0-ZE350-UL - 14W @ 350mA 0-10V Dimming Driver Uplight L114.0-ZE350-DL - 14W @ 350mA 0-10V Dimming Driver Downlight L114.0-LT350-UL - 14W @ 350mA Leading and Trailing Edge Dimming Driver Uplight	120 - 277V (50 / 60Hz)	Not Applicable
ORDER INFO			
CRNM	L114-ZE350-UL	120 - 277V	Not Applicable

Example ^ (may not represent a manufacturable product)

Aesthetics & Options

TRIM	FINISH	COLOR TEMP	OPTIONS
Not Applicable	AC - Antique Copper TB - Textured Black (Standard) AS - Antique Silver BT - Bronze Mist BZ - Textured Bronze SM - Matte Silver SN - Sand TW - Textured White SW - Swedish Steel	27K - 2700K Color Temp 30K - 3000K Color Temp 35K - 3500K Color Temp 40K - 4000K Color Temp 50K - 5000K Color Temp	CPL - Clear Polycarbonate Lens (Standard) F - Fused FAL - Frosted Acrylic Lens TP - Tamper Resistant Screws
ORDER INFO			
Not Applicable	AC	27K	CPL

Example ^ (may not represent a manufacturable product)

PROD	SOURCE	30K SPECS				
CRNM	L114	<ul style="list-style-type: none"> • 30K - 3000K Color Temp • 1465 LED Source Lumens (1465 Per Side) • 104.6 LED Source Lumens Per Watt 				

REPLACEMENT PART	PART NO	NOTES
Clear Polycarbonate Lens	34105	*Leading and Trailing Edge Drivers are dimmable @120V Only
Frosted Acrylic Lens	3056462	*Constant Voltage Drivers are non dimmable

Don't see the configuration you are looking for?
Call us today at (513) 858-6004



TERONLIGHTING.COM
 33 DONALD DR, FAIRFIELD, OH 45014
 P: 513.858.6004 F: 513.858.6038
 E: SALES@TERONLIGHT.COM



We reserve the right to revise the design components of any product due to parts availability or change in UL standards, without assuming any obligation or liability to modify any products previously manufactured, and without notice.

CORNERSTONE MINI LED

Architectural Outdoor



Fixture Core

PROJECT:	
TYPE:	
PO#:	QTY:
COMMENTS:	

PRODUCT CODE	SOURCE/WATTAGE	VOLTAGE	DIMMING DRIVER
CRNM - Cornerstone MINI	L114.0-LT350-DL - 14W @ 350mA Leading and Trailing Edge Dimming Driver Downlight L214.0-LT700 - 28W @ 700mA Leading and Trailing Edge Dimming Driver L214.0-ZE700 - 28W @ 700mA Constant Voltage 0-10V Dimming Driver	120 - 277V (50 / 60Hz)	Not Applicable
ORDER INFO			
CRNM	L114-LT350-UL	120 - 277V	Not Applicable

Example ^ (may not represent a manufacturable product)

Aesthetics & Options

TRIM	FINISH	COLOR TEMP	OPTIONS
Not Applicable	AC - Antique Copper TB - Textured Black (Standard) AS - Antique Silver BT - Bronze Mist BZ - Textured Bronze SM - Matte Silver SN - Sand TW - Textured White SW - Swedish Steel	27K - 2700K Color Temp 30K - 3000K Color Temp 35K - 3500K Color Temp 40K - 4000K Color Temp 50K - 5000K Color Temp	CPL - Clear Polycarbonate Lens (Standard) F - Fused FAL - Frosted Acrylic Lens TP - Tamper Resistant Screws
ORDER INFO			
Not Applicable	AC	27K	CPL

Example ^ (may not represent a manufacturable product)

PROD	SOURCE	30K SPECS				
CRNM	L114	<ul style="list-style-type: none"> 30K - 3000K Color Temp 1465 LED Source Lumens (1465 Per Side) 104.6 LED Source Lumens Per Watt 				
	L214.0	<ul style="list-style-type: none"> 30K - 3000K Color Temp 2930 LED Source Lumens (1465 Per Side) 104.6 LED Source Lumens Per Watt 				

REPLACEMENT PART	PART NO	NOTES
Clear Polycarbonate Lens	34105	*Leading and Trailing Edge Drivers are dimmable @120V Only
Frosted Acrylic Lens	3056462	*Constant Voltage Drivers are non dimmable

Don't see the configuration you are looking for?
Call us today at (513) 858-6004



TERONLIGHTING.COM
 33 DONALD DR, FAIRFIELD, OH 45014
 P: 513.858.6004 F: 513.858.6038
 E: SALES@TERONLIGHT.COM



We reserve the right to revise the design components of any product due to parts availability or change in UL standards, without assuming any obligation or liability to modify any products previously manufactured, and without notice.

CORNERSTONE MINI LED

Architectural Outdoor



Fixture Core

PROJECT:	
TYPE:	
PO#:	QTY:
COMMENTS:	

PRODUCT CODE	SOURCE/WATTAGE	VOLTAGE	DIMMING DRIVER
CRNM - Cornerstone MINI	L14.0-LT350-DL - 14W @ 350mA Leading and Trailing Edge Dimming Driver Downlight L14.0-ZE350-DL - 14W @ 350mA Constant Current 0-10V Dimming Driver Downlight	120 - 277V (50 / 60Hz)	LT - Leading and Trailing Edge ZE - 0-10V Dimming
ORDER INFO			
CRNM	L14-LT350-UL	120 - 277V	LT

Example ^ (may not represent a manufacturable product)

Aesthetics & Options

TRIM	FINISH	COLOR TEMP	OPTIONS
Not Applicable	AC - Antique Copper TB - Textured Black (Standard) AS - Antique Silver BT - Bronze Mist BZ - Textured Bronze SM - Matte Silver SN - Sand TW - Textured White SW - Swedish Steel	27K - 2700K Color Temp 30K - 3000K Color Temp 35K - 3500K Color Temp 40K - 4000K Color Temp 50K - 5000K Color Temp	CPL - Clear Polycarbonate Lens (Standard) F - Fused FAL - Frosted Acrylic Lens TP - Tamper Resistant Screws
ORDER INFO			
Not Applicable	AC	27K	CPL

Example ^ (may not represent a manufacturable product)

PROD	SOURCE	30K SPECS				
CRNM	L14.0	<ul style="list-style-type: none"> 30K - 3000K Color Temp 1465 LED Source Lumens 104.6 LED Source Lumens Per Watt 				
	L14.0	<ul style="list-style-type: none"> 30K - 3000K Color Temp 1465 LED Source Lumens 104.6 LED Source Lumens Per Watt 				

REPLACEMENT PART	PART NO	NOTES
Clear Polycarbonate Lens	34105	*Leading and Trailing Edge Drivers are dimmable @120V Only
Frosted Acrylic Lens	3056462	*Constant Voltage Drivers are non dimmable

Don't see the configuration you are looking for?
Call us today at (513) 858-6004



TERONLIGHTING.COM
 33 DONALD DR, FAIRFIELD, OH 45014
 P: 513.858.6004 F: 513.858.6038
 E: SALES@TERONLIGHT.COM



We reserve the right to revise the design components of any product due to parts availability or change in UL standards, without assuming any obligation or liability to modify any products previously manufactured, and without notice.