

# ROYAL EB VHT LED

Architectural Outdoor



PROJECT:	
TYPE:	
PO#:	QTY:
COMMENTS:	

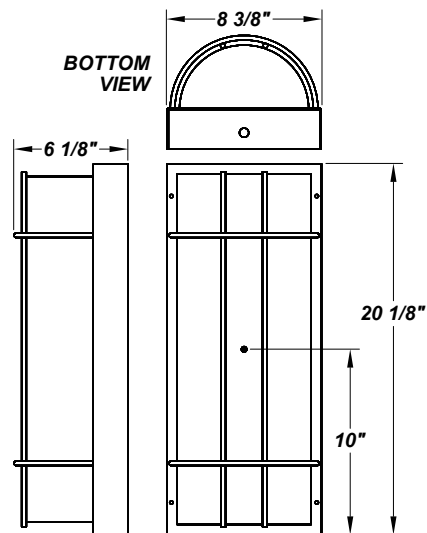


## FEATURES

- Aluminum Reflector
- Constant Current
- CSA Listed Wet Location
- Dimmable to 10% From 120V to 230V
- Emergency Battery Available
- LED Light Fixture
- Luminous White 75% DR Acrylic Diffuser
- Mounting Hardware Included
- Mounts Directly to 4" Junction Box (By Others)
- Steel Fascia w/ Textured Black Polyester Powder Coat Finish
- Steel Mounting Pan w/ Hi-Reflectance White Powder Coat Finish

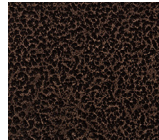
## LINE DRAWING

LINE DRAWING NOT TO SCALE

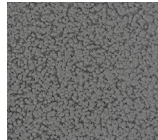


## FINISHES

Antique Copper



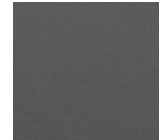
Antique Silver



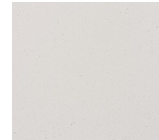
Bronze Mist



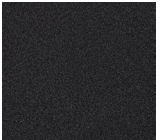
Matte Silver



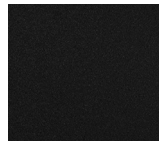
Sand



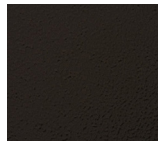
Swedish Steel



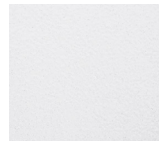
Textured Black



Textured Bronze



Textured White



For RAL Colors & Custom Match - Contact Teron Lighting Inc.

# ROYAL EB VHT LED

Architectural Outdoor



Fixture Core

PROJECT:	
TYPE:	
PO#:	QTY:
COMMENTS:	

PRODUCT CODE	SOURCE/WATTAGE	VOLTAGE	DIMMING DRIVER
RLB - Royal EB	<b>L20.0-ZE700</b> - 20.0W @ 700mA Line Voltage 4-Wire Dimming Driver (Dimmable 0 - 10V) <b>L25.0-ZE875</b> - 25.0W @ 875mA Line Voltage 4-Wire Dimming Driver (Dimmable 0 - 10V) <b>L35.0-ZE1150</b> - 35.0W @ 1150mA Line Voltage 4-Wire Dimming Driver (Dimmable 0 - 10V)	<b>120V</b> <b>277V</b> (50 / 60Hz)	<b>Not Applicable</b>
ORDER INFO			
RLB	L20.0-ZE700	120V	Not Applicable

Example ^ (may not represent a manufacturable product)

Aesthetics & Options

TRIM	FINISH	COLOR TEMP	OPTIONS
VHT	<b>AC</b> - Antique Copper <b>AS</b> - Antique Silver <b>BT</b> - Bronze Mist <b>BN</b> - Brushed Nickel <b>SM</b> - Matte Silver <b>SN</b> - Sand <b>SW</b> - Swedish Steel <b>TB</b> - Textured Black (Standard) <b>BZ</b> - Textured Bronze <b>TW</b> - Textured White	<b>30K</b> - 3000K Color Temp <b>35K</b> - 3500K Color Temp <b>40K</b> - 4000K Color Temp	<b>F</b> - Fused <b>TP</b> - Tamper Resistant Screws <b>EB</b> - Integral Emergency Battery (Please Specify Voltage)
ORDER INFO			
VHT	AC	27K	F

Example ^ (may not represent a manufacturable product)

PROD	SOURCE	30K SPECS			
RLB	L20.0	<ul style="list-style-type: none"> <li>30K - 3000K Color Temp</li> <li>2309 LED Source Lumens</li> <li>115.5 LED Source Lumens Per Watt</li> </ul>			
	L25.0	<ul style="list-style-type: none"> <li>30K - 3000K Color Temp</li> <li>2887 LED Source Lumens</li> <li>115.5 LED Source Lumens Per Watt</li> </ul>			
	L35.0	<ul style="list-style-type: none"> <li>30K - 3000K Color Temp</li> <li>3926 LED Source Lumens</li> <li>112.2 LED Source Lumens Per Watt</li> </ul>			

REPLACEMENT PART	PART NO	NOTES
White 75% DR Acrylic Lens	3051160	Don't see the configuration you are looking for? Call us today at (513) 858-6004



**TERONLIGHTING.COM**  
 33 DONALD DR, FAIRFIELD, OH 45014  
 P: 513.858.6004 F: 513.858.6038  
 E: SALES@TERONLIGHT.COM



We reserve the right to revise the design components of any product due to parts availability or change in UL standards, without assuming any obligation or liability to modify any products previously manufactured, and without notice.