

ROYAL EB SQR LED

Architectural Outdoor



| | |
|-----------|------|
| PROJECT: | |
| TYPE: | |
| PO#: | QTY: |
| COMMENTS: | |

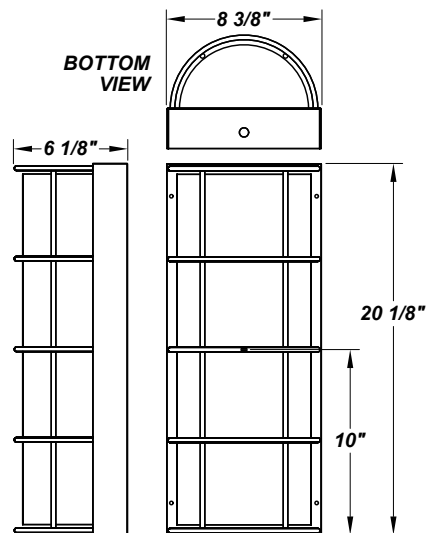


FEATURES

- Steel Fascia w/ Textured Black Polyester Powder Coat Finish
- Luminous White 75% DR Acrylic Diffuser
- Steel Mounting Pan w/ Hi-Reflectance White Powder Coat Finish
- Aluminum Reflector
- Mounts Directly to 4" Junction Box (By Others)
- Constant Current
- Dimmable to 10% From 120V to 230V
- CSA Listed Wet Location
- Emergency Battery Available
- LED Light Fixture
- Mounting Hardware Included

LINE DRAWING

LINE DRAWING NOT TO SCALE

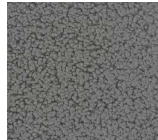


FINISHES

Antique Copper



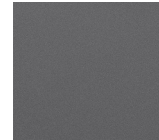
Antique Silver



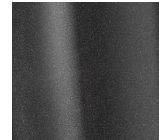
Bronze Mist



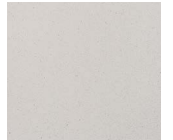
Matte Silver



Metallic Black



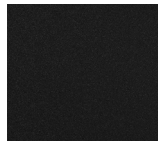
Sand



Swedish Steel



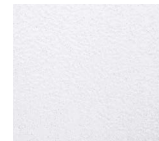
Textured Black



Textured Bronze



Textured White



For RAL Colors & Custom Match - Contact Teron Lighting Inc.

ROYAL EB SQR LED

Architectural Outdoor



Fixture Core

| | |
|-----------|------|
| PROJECT: | |
| TYPE: | |
| PO#: | QTY: |
| COMMENTS: | |

| PRODUCT CODE | SOURCE/WATTAGE | VOLTAGE | DIMMING DRIVER |
|----------------|--|---|-----------------------|
| RLB - Royal EB | L20.0-ZE700 - 20.0W @ 700mA Line Voltage 4-Wire Dimming Driver (Dimmable 0 - 10V) L25.0-ZE875 - 25.0W @ 875mA Line Voltage 4-Wire Dimming Driver (Dimmable 0 - 10V) L35.0-ZE1150 - 35.0W @ 1150mA Line Voltage 4-Wire Dimming Driver (Dimmable 0 - 10V) | 120V 277V (50 / 60Hz) | Not Applicable |
| ORDER INFO | | | |
| RLB | L20.0-ZE700 | 120V | Not Applicable |

Example ^ (may not represent a manufacturable product)

Aesthetics & Options

| TRIM | FINISH | COLOR TEMP | OPTIONS |
|------------|--|--|--|
| SQR | AC - Antique Copper AS - Antique Silver BT - Bronze Mist BN - Brushed Nickel SM - Matte Silver MB - Metallic Black SN - Sand SW - Swedish Steel TB - Textured Black (Standard) BZ - Textured Bronze TW - Textured White | 27K - 2700K Color Temp 30K - 3000K Color Temp 35K - 3500K Color Temp 40K - 4000K Color Temp | F - Fused TP - Tamper Resistant Screws EB - Integral Emergency Battery (Please Specify Voltage) |
| ORDER INFO | | | |
| SQR | AC | 27K | F |

Example ^ (may not represent a manufacturable product)

| PROD | SOURCE | 30K SPECS | | | | |
|------|--------|--|--|--|--|--|
| RLB | L20.0 | <ul style="list-style-type: none"> 30K - 3000K Color Temp 2309 LED Source Lumens 115.5 LED Source Lumens Per Watt | | | | |
| | L25.0 | <ul style="list-style-type: none"> 30K - 3000K Color Temp 2887 LED Source Lumens 115.5 LED Source Lumens Per Watt | | | | |
| | L35.0 | <ul style="list-style-type: none"> 30K - 3000K Color Temp 3926 LED Source Lumens 112.2 LED Source Lumens Per Watt | | | | |

| REPLACEMENT PART | PART NO | NOTES |
|---------------------------|---------|-------|
| White 75% DR Acrylic Lens | 3051160 | |

Don't see the configuration you are looking for?
Call us today at (513) 858-6004



TERONLIGHTING.COM
 33 DONALD DR, FAIRFIELD, OH 45014
 P: 513.858.6004 F: 513.858.6038
 E: SALES@TERONLIGHT.COM



We reserve the right to revise the design components of any product due to parts availability or change in UL standards, without assuming any obligation or liability to modify any products previously manufactured, and without notice.