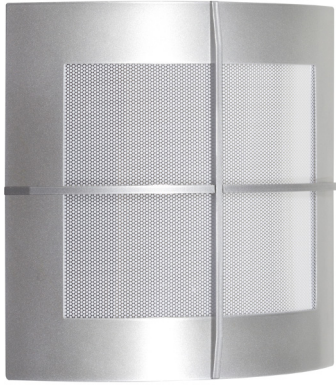


# TEMPEST S LED

Architectural Indoor



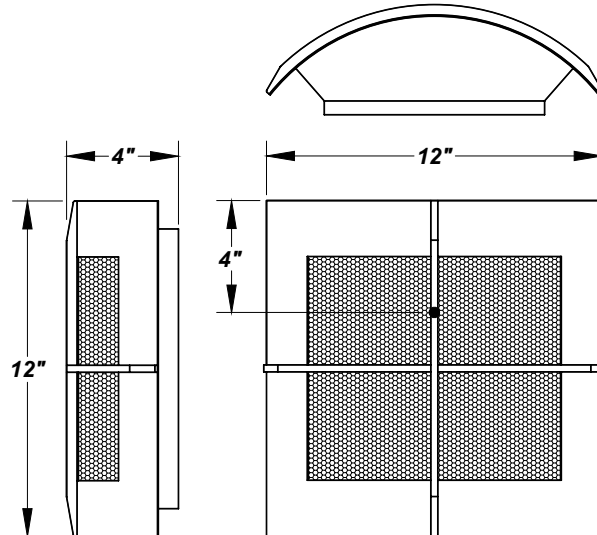
PROJECT:	
TYPE:	
PO#:	QTY:
COMMENTS:	

## FEATURES

- 18 Gauge Steel Fascia and Steel Trim Accents with Powder Coat Finish
- ADA Compliant
- Aluminum Mounting Pan with Hi-Reflectance White Powder Coat Finish
- Constant Current at 350 Milliamps
- CSA Listed Dry Location For Wall Mounting
- Dimmable to <5% With Either Triac or Electronic Dimmers
- LED Light Fixture
- Mounting Hardware Included
- Mounts Directly to 4" Junction Box (By Others)
- One 12.6W LED Driver Per 12.5W Module
- Open Top and Bottom
- Over-Current, Over-Voltage, and Short Circuit Protection
- UL Class 2 Driver - Power Factor >.90
- White Acrylic with Mylar Perf

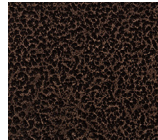
## LINE DRAWING

LINE DRAWING NOT TO SCALE

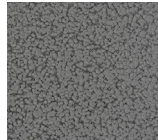


## FINISHES

Antique Copper



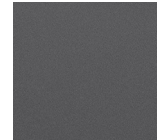
Antique Silver



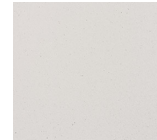
Bronze Mist



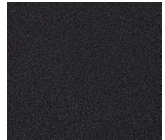
Matte Silver



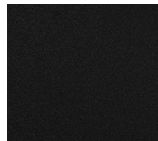
Sand



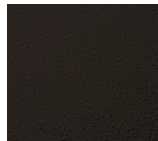
Swedish Steel



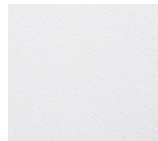
Textured Black



Textured Bronze



Textured White



For RAL Colors & Custom Match - Contact Teron Lighting Inc.

# TEMPEST S LED

Architectural Indoor



Fixture Core

PROJECT:	
TYPE:	
PO#:	QTY:
COMMENTS:	

PRODUCT CODE	SOURCE/WATTAGE	VOLTAGE	DIMMING DRIVER
TEMS - Tempest S	L12.5 - 12.5W (40) LED Module @350mA L25.0 - 25.0W (80) LED Module @350mA	120V 277V (Not Dimmable) (50 / 60Hz)	Not Applicable
ORDER INFO			
TEMS Example ^	L12.5	120V	Not Applicable

Aesthetics & Options

TRIM	FINISH	COLOR TEMP	OPTIONS
Not Applicable	AC - Antique Copper AS - Antique Silver BT - Bronze Mist SM - Matte Silver (Standard) SN - Sand SW - Swedish Steel TB - Textured Black BZ - Textured Bronze TW - Textured White	30K - 3000K Color Temp 35K - 3500K Color Temp 40K - 4000K Color Temp	F - Fused TBC - White Acrylic Top & Bottom Cover TCV - White Acrylic Top Cover WAL - White Acrylic
ORDER INFO			
Not Applicable Example ^	AC	27K	F

PROD	SOURCE	30K SPECS				
TEMS	L12.5	<ul style="list-style-type: none"> <li>30K - 3000K Color Temp</li> <li>1195 LED Source Lumens</li> <li>95.6 LED Source Lumens Per Watt</li> </ul>				
	L25.0	<ul style="list-style-type: none"> <li>30K - 3000K Color Temp</li> <li>2390 LED Source Lumens</li> <li>95.6 LED Source Lumens Per Watt</li> </ul>				

REPLACEMENT PART	PART NO	NOTES
White Perf Acrylic Lens	3098060	
White Acrylic Lens	3097660	
		Don't see the configuration you are looking for? Call us today at (513) 858-6004



TERONLIGHTING.COM  
33 DONALD DR, FAIRFIELD, OH 45014  
P: 513.858.6004 F: 513.858.6038  
E: SALES@TERONLIGHT.COM



We reserve the right to revise the design components of any product due to parts availability or change in UL standards, without assuming any obligation or liability to modify any products previously manufactured, and without notice.