

MASTERS LED

Architectural Outdoor



PROJECT:	
TYPE:	
PO#:	QTY:
COMMENTS:	

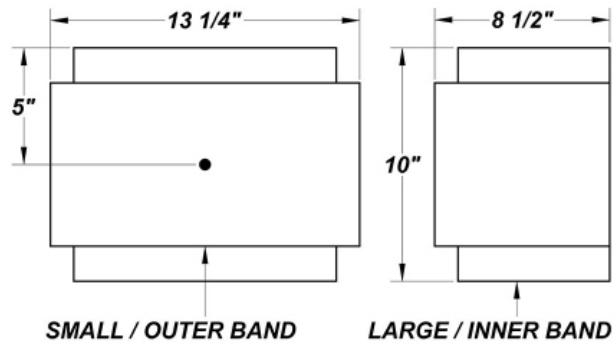
FEATURES

- Steel Trim Bands w/ Textured Bronze Powder Coat Finish
- Standard Up / Down Light Output
- Die-Cast Aluminum Ballast Housing w/ Textured Black Powder Coat Finish
- Clear Polycarbonate Diffuser
- Mounts Direct to Flat Surface w /Four #8 Wall Anchors (Not Included)
- 100V - 277V
- Surge Protector
- CSA Listed Wet location For Wall Mounting
- Emergency Battery Available
- LED Light Fixture



LINE DRAWING

LINE DRAWING NOT TO SCALE

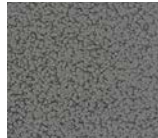


FINISHES

Antique Copper



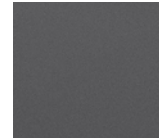
Antique Silver



Bronze Mist



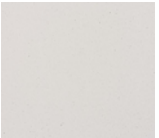
Matte Silver



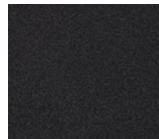
Metallic Black



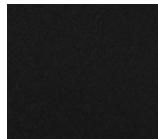
Sand



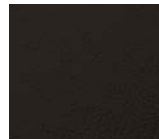
Swedish Steel



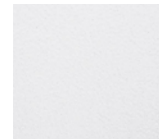
Textured Black



Textured Bronze



Textured White



For RAL Colors & Custom Match - Contact Teron Lighting Inc.

MASTERS LED

Architectural Outdoor



Fixture Core

PROJECT:	
TYPE:	
PO#:	QTY:
COMMENTS:	

PRODUCT CODE	SOURCE/WATTAGE	VOLTAGE	DIMMING DRIVER
MS - Master	L12.3-12CV - 12V Constant Voltage Non-Dimming Electronic Driver L20.0-ZE500 - 20W LED Strips @ 500mA 0-10 Dimming Driver	100 - 270V	0-10V - 0-10V Dimming
ORDER INFO			
MS	L12.3-12CV	100 - 270V	0-10V

Example ^ (may not represent a manufacturable product)

Aesthetics & Options

TRIM	FINISH	COLOR TEMP	OPTIONS
Not Applicable	AC - Antique Copper AS - Antique Silver BT - Bronze Mist SM - Matte Silver SN - Sand SW - Swedish Steel TB - Textured Black BZ - Textured Bronze (Standard) TW - Textured White	30K - 3000K Color Temp 35K - 3500K Color Temp 40K - 4000K Color Temp 50K - 5000K Color Temp	DL - Down Light (L12.3 Only) (4 Modules Directed Down) EB - Integral Emergency Battery (Please Specify Voltage When Ordering) F - Fused PCL120 - Photocell 120V PCL277 - Photocell 277V TP - Tamper-Proof Screw Set UDL - Up / Down Light Only
ORDER INFO			
Not Applicable	AC	30K	DL

Example ^ (may not represent a manufacturable product)

PROD	SOURCE	30K SPECS			
MS	L12.3	<ul style="list-style-type: none"> 80 CRI Typ. 30K - 3000K Color Temp 9 LEDs Per ThermAdjust Module 1264 LED Source Lumens 103.1 LED Source Lumens Per Watt 			
	L20.0	<ul style="list-style-type: none"> 30K - 3000K Color Temp 1264 LED Source Lumens 104.6 LED Source Lumens Per Watt 			

REPLACEMENT PART	PART NO	NOTES
Clear Polycarbonate Diffuser	34065	

Don't see the configuration you are looking for?
Call us today at (513) 858-6004



TERONLIGHTING.COM
 33 DONALD DR, FAIRFIELD, OH 45014
 P: 513.858.6004 F: 513.858.6038
 E: SALES@TERONLIGHT.COM



We reserve the right to revise the design components of any product due to parts availability or change in UL standards, without assuming any obligation or liability to modify any products previously manufactured, and without notice.

MASTERS LED

Architectural Outdoor



Fixture Core

PROJECT:	
TYPE:	
PO#:	QTY:
COMMENTS:	

PRODUCT CODE	SOURCE/WATTAGE	VOLTAGE	DIMMING DRIVER
MS - Master	L26.0-ZE600 - 26W LED Strips @600mA 0-10V Dimming Driver L28.0-ZE700 - 28W LED Strips @600mA 0-10V Dimming Driver	120 - 270V	0-10V - 0-10V Dimming
ORDER INFO			
MS	L26.0-ZE600	120 - 270V	0-10V

Example ^ (may not represent a manufacturable product)

Aesthetics & Options

TRIM	FINISH	COLOR TEMP	OPTIONS
Not Applicable	AC - Antique Copper AS - Antique Silver BT - Bronze Mist SM - Matte Silver SN - Sand SW - Swedish Steel TB - Textured Black BZ - Textured Bronze (Standard) TW - Textured White	30K - 3000K Color Temp 35K - 3500K Color Temp 40K - 4000K Color Temp 50K - 5000K Color Temp	DL - Down Light (L12.3 Only) (4 Modules Directed Down) EB - Integral Emergency Battery (Please Specify Voltage When Ordering) F - Fused PCL120 - Photocell 120V PCL277 - Photocell 277V TP - Tamper-Proof Screw Set UDL - Up / Down Light Only
ORDER INFO			
Not Applicable	AC	30K	DL

Example ^ (may not represent a manufacturable product)

PROD	SOURCE	30K SPECS				
MS	L26.0	<ul style="list-style-type: none"> 30K - 3000K Color Temp 2511.4 LED Source Lumens 95.6 LED Source Lumens Per Watt 				
	L28.0	<ul style="list-style-type: none"> 30K - 3000K Color Temp 2930 LED Source Lumens 104.6 LED Source Lumens Per Watt 				

REPLACEMENT PART	PART NO	NOTES
Clear Polycarbonate Diffuser	34065	

Don't see the configuration you are looking for?
Call us today at (513) 858-6004



TERONLIGHTING.COM
33 DONALD DR, FAIRFIELD, OH 45014
P: 513.858.6004 F: 513.858.6038
E: SALES@TERONLIGHT.COM



We reserve the right to revise the design components of any product due to parts availability or change in UL standards, without assuming any obligation or liability to modify any products previously manufactured, and without notice.