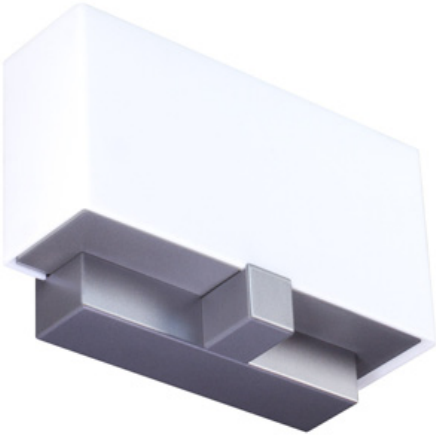


PROJECT :
TYPE :
ORDERING # :
COMMENTS :

BEL AIR M LED



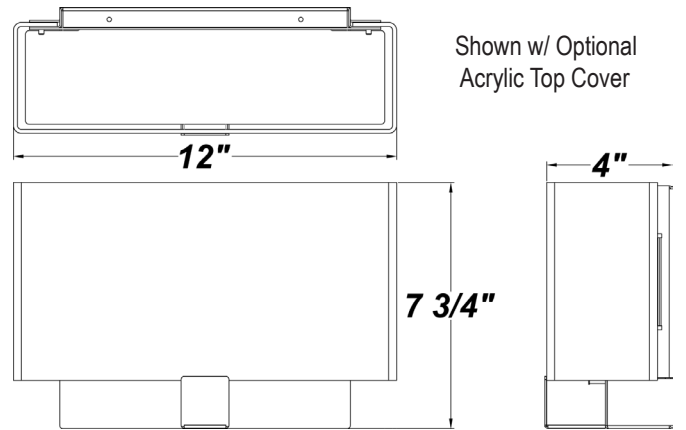
FEATURES

- Frosted White Acrylic Diffuser
- Steel Mounting Pan w/ Matte Silver Powder Coat Finish
- Aluminum Reflective LED Mount Plate
- Steel Trim w/ Matte Silver Powder Coat Finish
- Open Top
- Mounts Directly to 4" Junction Box (By Others)
- Mounting Hardware Included
- CSA Listed Dry Location For Wall Mounting
- ADA Compliant

DIMMING FEATURES

- Dimmable 0 - 10V
- Over-Current, Over-Voltage, and Short Circuit Protection
- Constant Current
- UL Class 2 Driver - Power Factor >.90
- Estimated 50,000 Hours Life (L70)

SOURCE/WATTAGE	30K SPECIFICATIONS
L25.0 - (2) 12.5W Modules - Constant Current 700 Milliamps Driver - 24W Input	L25.0 30K - 3500K Color Temp. - 24 ν V, Color Temp = 3000K Nominal - 2734.2 LED Source Lumens - 113.9 LED Source Lumens Per Watt



ORDERING INFORMATION

Example : (BLRM - L25.0 - 120-277V - ZE700 - WAL - BZ - 35K) Matte Silver is Standard Finish

PRODUCT	SOURCE/WATTAGE	VOLTAGE	DRIVER OPTIONS	DIFFUSER	FINISH	OPTIONS
Bel Air M	L25.0 - (2) 12.5W LED Modules	120 - 277V (120 - 277V Dimmable For 0-10V)	ZE700 - 700mA Dimming Driver (For L25.0) (Dimmable 0 - 10V)	WAL - White Acrylic Lens	SM - Matte Silver TB - Textured Black AC - Antique Copper AS - Antique Silver BT - Bronze Mist CP - Copper SN - Sand SW - Swedish Steel BZ - Textured Bronze TW - Textured White RAL Colors or Custom Match - Consult Factory	27K - 2700K Color Temp. 30K - 3000K Color Temp. 35K - 3500K Color Temp. 40K - 4000K Color Temp. F - Fused TCV - White Acrylic Top Cover

REPLACEMENT PARTS PART NO.

White Acrylic Lens	3045360
--------------------	---------

NOTES

We reserve the right to revise the design or components of any product due to parts availability or change in UL standards, without assuming any obligation or liability to modify any products previously manufactured, and without notice.

