

# BISCAYNE 49"

Architectural Indoor



PROJECT:	
TYPE:	
PO#:	QTY:
COMMENTS:	



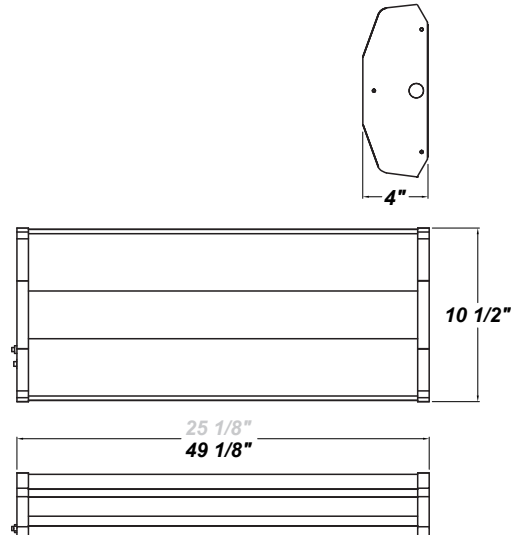
## FEATURES

- Steel Housing and End Caps with Matte Silver Powder Coat Finish
- 50% Impact Resistant Frosted DR Acrylic Diffuser
- Steel Reflector Plate with Hi-Reflectance White Powder Coat Finish
- Mounts Directly to Wall or Ceiling with Four Wall Anchors (Not Included)
- ADA Compliant
- CSA Listed Damp Location For Wall or Ceiling Mount
- Emergency Battery Available
- Vandal Resistant



## LINE DRAWING

LINE DRAWING NOT TO SCALE

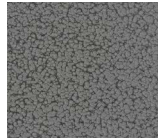


## FINISHES

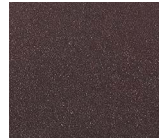
Antique Copper



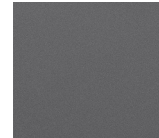
Antique Silver



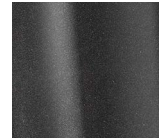
Bronze Mist



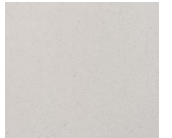
Matte Silver



Metallic Black



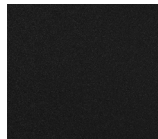
Sand



Swedish Steel



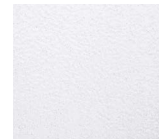
Textured Black



Textured Bronze



Textured White



For RAL Colors & Custom Match - Contact Teron Lighting Inc.



# BISCAYNE 49"

Architectural Indoor



Fixture Core

PROJECT:	
TYPE:	
PO#:	QTY:
COMMENTS:	

PRODUCT CODE	SOURCE/WATTAGE	VOLTAGE	DIMMING BALLAST
BSC49 - Biscayne 49"	228E - (2) 28W T5 232E - (2) 32W T8 432E - (4) 32W T8 428E - (4) 28W T5 254E-HO - (2) 54W T5 HO (High Output)	120V 277V	Not Applicable
ORDER INFO			
BSC49	228E	120V	Not Applicable

Example ^ (may not represent a manufacturable product)

Aesthetics & Options

TRIM	FINISH	COLOR TEMP	OPTIONS
Not Applicable	AC - Antique Copper AS - Antique Silver BT - Bronze Mist SM - Matte Silver (Standard) MB - Metallic Black SN - Sand SW - Swedish Steel TB - Textured Black BZ - Textured Bronze TW - Textured White	Not Applicable	DIM - Dimming Ballast (Unavailable for HO) EBR - Remote Mount Battery (Field Installed)* EBW - Integral Emergency Battery** F - Fused TP - Tamper Resistant Screws
ORDER INFO			
Not Applicable	AC	Not Applicable	DIM

Example ^ (may not represent a manufacturable product)

REPLACEMENT PART	PART NO	NOTES
Frosted 4' Acrylic Diffuser White	3001562	*EBR: Bodine's B94CG (Electronic) - Temperature Rating (Ambient) 32° F - 122° F
4' Acrylic Lens Assembly	38113	**EBW: Bodine's B90 (T8 Electronic) / Bodine's LP550 (T5 Electronic) - Temperature Rating (Ambient) 32° F - 122° F
		Emergency Battery Options - Initial light output in Emergency mode will last for a minimum of 90 minutes. 1 lamp wired unless ordered otherwise.
		Don't see the configuration you are looking for? Call us today at (513) 858-6004



**TERONLIGHTING.COM**  
 33 DONALD DR, FAIRFIELD, OH 45014  
 P: 513.858.6004 F: 513.858.6038  
 E: SALES@TERONLIGHT.COM



We reserve the right to revise the design components of any product due to parts availability or change in UL standards, without assuming any obligation or liability to modify any products previously manufactured, and without notice.