

# CALCUTTA CA BFP LED

Architectural Outdoor



PROJECT:	
TYPE:	
PO#:	QTY:
COMMENTS:	



## FEATURES

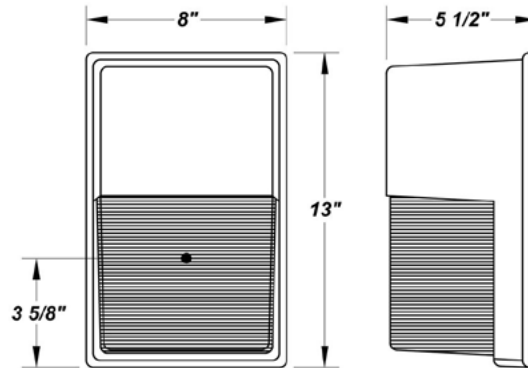
- Clear Prismatic Ribbed Borosilicate Glass lens
- CSA Listed Wet Location For Wall Mount
- Die-Cast Aluminum Housing w/ Textured Bronze Polyester Powder Coat Finish
- LED Light Fixture
- Mounts Directly to 4" Junction Box (By Others)
- Photocell Comes Standard (If Not Desired Disconnect During Installation)
- UL Listed Wet Fixture



## LINE DRAWING

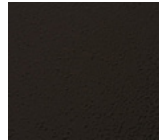
LINE DRAWING NOT TO SCALE

*0.50" CONDUIT ENTRIES  
ONE ON BOTTOM OF FIXTURE  
AND ONE ON BACK OF HOUSING*



## FINISHES

Textured  
Bronze



For RAL Colors  
& Custom  
Match -  
Contact Teron  
Lighting Inc.

# CALCUTTA CA BFP LED

Architectural Outdoor



Fixture Core

PROJECT:	
TYPE:	
PO#:	QTY:
COMMENTS:	

PRODUCT CODE	SOURCE/WATTAGE	VOLTAGE	DIMMING DRIVER
CAB - Calcutta CA BFP	L20.0-ZE550 - 20W @ 550mA 0-10V Dimming Driver	120 - 277V (50/60Hz)	0-10V Dimming
ORDER INFO			
CAB	L20.0-ZE700	120 - 277V	Not Applicable

Example ^ (may not represent a manufacturable product)

Aesthetics & Options

TRIM	FINISH	COLOR TEMP	OPTIONS
Not Applicable	BZ - Textured Bronze	40K - 4000K Color Temp	PCL - Photocell
ORDER INFO			
Not Applicable	BZ	40K	PCL

Example ^ (may not represent a manufacturable product)

PROD	SOURCE	40K SPECS			
CAB	L20.0	<ul style="list-style-type: none"> <li>40K - 4000K Color Temp</li> <li>1827 LED Delivered Lumens</li> <li>92 LED Delivered Lumens Per Watt</li> </ul>			

REPLACEMENT PART	PART NO	NOTES
Clear Glass Diffuser	37027	

Don't see the configuration you are looking for?  
Call us today at (513) 858-6004



TERONLIGHTING.COM  
33 DONALD DR, FAIRFIELD, OH 45014  
P: 513.858.6004 F: 513.858.6038  
E: SALES@TERONLIGHT.COM



We reserve the right to revise the design components of any product due to parts availability or change in UL standards, without assuming any obligation or liability to modify any products previously manufactured, and without notice.