

# TIGER FLD LED

Architectural Indoor



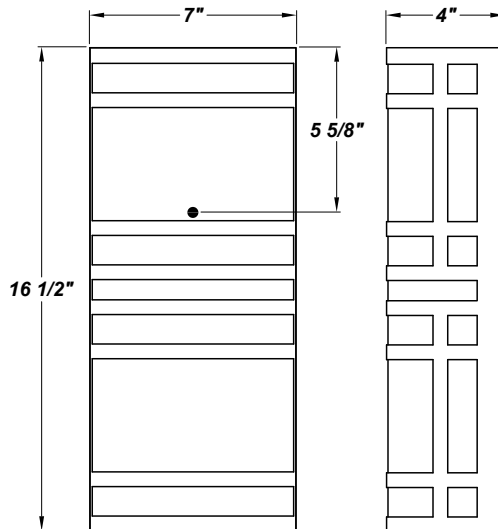
|           |      |
|-----------|------|
| PROJECT:  |      |
| TYPE:     |      |
| PO#:      | QTY: |
| COMMENTS: |      |

## FEATURES

- Steel Fascia with Matte Silver Powder Coat Finish
- Aluminum Mounting Plate Mounts to Flat Surface
- Centered Over and Mounted to 4" J-Box (By Others)
- Luminous White Acrylic Diffuser
- Open Top and Bottom
- Dimmable to 10%
- ADA Compliant
- CSA Listed Dry Location For Wall Mount
- Mounting Hardware Included

## LINE DRAWING

LINE DRAWING NOT TO SCALE

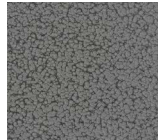


## FINISHES

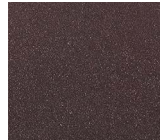
Antique Copper



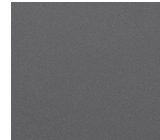
Antique Silver



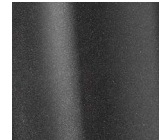
Bronze Mist



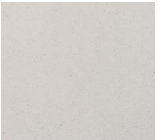
Matte Silver



Metallic Black



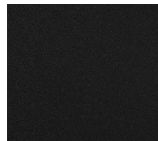
Sand



Swedish Steel



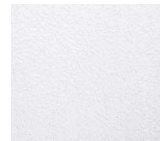
Textured Black



Textured Bronze



Textured White



For RAL Colors & Custom Match - Contact Teron Lighting Inc.

# TIGER FLD LED

Architectural Indoor



Fixture Core

|           |      |
|-----------|------|
| PROJECT:  |      |
| TYPE:     |      |
| PO#:      | QTY: |
| COMMENTS: |      |

| PRODUCT CODE     | SOURCE/WATTAGE   | VOLTAGE  | DIMMING DRIVER |
|------------------|--|--|----------------|
| TGR - Tiger      | <b>L12.0-LT350</b> - 12.0W LED Strips @ 350mA 2-Wire Trailing or Leading Edge Driver<br><b>L18.0-LT500</b> - 18.0W LED Strips @ 500mA 2-Wire Trailing or Leading Edge Driver | <b>100-277V</b><br>(120-230V Dimmable For Most LT LED Drivers)<br>(ZE 0-10V Drivers Are Dimmable From 120V - 277V) | Not Applicable |
| ORDER INFO       |  |  |                |
| TGR<br>Example ^ | L12.0-LT350  | 100-277V   | Not Applicable |

Aesthetics & Options

| TRIM             | FINISH   | COLOR TEMP  | OPTIONS   |
|------------------|--|---|---|
| FLD              | <b>AC</b> - Antique Copper<br><b>AS</b> - Antique Silver<br><b>BT</b> - Bronze Mist<br><b>MB</b> - Metallic Black<br><b>SM</b> - Matte Silver (Standard)<br><b>SN</b> - Sand<br><b>SW</b> - Swedish Steel<br><b>TB</b> - Textured Black<br><b>BZ</b> - Textured Bronze<br><b>TW</b> - Textured White | <b>30K</b> - 3000K Color Temp<br><b>35K</b> - 3500K Color Temp<br><b>40K</b> - 4000K Color Temp | <b>EB</b> - Emergency Integral Driver<br><b>F</b> - Fused<br><b>TBC</b> - Perforated Steel Top & Bottom Covers<br><b>TCV</b> - Perforated Steel Top Cover |
| ORDER INFO       |  |   |   |
| FLD<br>Example ^ | AC   | 30K   | EB  |

| PROD | SOURCE | 30K SPECS  |  |  |  |  |
|------|--------|--|--|--|--|--|
| TGR  | L12.0  | <ul style="list-style-type: none"> <li>30K - 3000K Color Temp</li> <li>1400 LED Source Lumens</li> <li>116.7 LED Source Lumens Per Watt</li> </ul> |  |  |  |  |
|      | L18.0  | <ul style="list-style-type: none"> <li>30K - 3000K Color Temp</li> <li>1986 LED Source Lumens</li> <li>110.3 LED Source Lumens Per Watt</li> </ul> |  |  |  |  |

| REPLACEMENT PART   | PART NO | NOTES |
|--------------------|---------|-------|
| White Acrylic Lens | 3040960 |       |

Don't see the configuration you are looking for?  
Call us today at (513) 858-6004



TERONLIGHTING.COM  
 33 DONALD DR, FAIRFIELD, OH 45014  
 P: 513.858.6004 F: 513.858.6038  
 E: SALES@TERONLIGHT.COM



We reserve the right to revise the design components of any product due to parts availability or change in UL standards, without assuming any obligation or liability to modify any products previously manufactured, and without notice.

# TIGER FLD LED

Architectural Indoor



Fixture Core

|           |      |
|-----------|------|
| PROJECT:  |      |
| TYPE:     |      |
| PO#:      | QTY: |
| COMMENTS: |      |

| PRODUCT CODE     | SOURCE/WATTAGE   | VOLTAGE  | DIMMING DRIVER        |
|------------------|--|--|-----------------------|
| TGR - Tiger      | <b>L18.0-ZE500</b> - 18.0W LED Strips @ 500mA Low Voltage 4-Wire Dimming Electronic Driver | <b>100-277V</b><br>(120-230V Dimmable For Most LT LED Drivers)<br>(ZE 0-10V Drivers Are Dimmable From 120V - 277V) | <b>Not Applicable</b> |
| ORDER INFO       |  |  |                       |
| TGR<br>Example ^ | L18.0-ZE500  | 100-277V   | Not Applicable        |

Aesthetics & Options

| TRIM             | FINISH   | COLOR TEMP  | OPTIONS   |
|------------------|--|---|---|
| <b>FLD</b>       | <b>AC</b> - Antique Copper<br><b>AS</b> - Antique Silver<br><b>BT</b> - Bronze Mist<br><b>MB</b> - Metallic Black<br><b>SM</b> - Matte Silver (Standard)<br><b>SN</b> - Sand<br><b>SW</b> - Swedish Steel<br><b>TB</b> - Textured Black<br><b>BZ</b> - Textured Bronze<br><b>TW</b> - Textured White | <b>30K</b> - 3000K Color Temp<br><b>35K</b> - 3500K Color Temp<br><b>40K</b> - 4000K Color Temp | <b>EB</b> - Emergency Integral Driver<br><b>F</b> - Fused<br><b>TBC</b> - Perforated Steel Top & Bottom Covers<br><b>TCV</b> - Perforated Steel Top Cover |
| ORDER INFO       |  |   |   |
| FLD<br>Example ^ | AC   | 30K   | EB  |

| PROD | SOURCE | 30K SPECS  |  |  |  |  |
|------|--------|--|--|--|--|--|
| TGR  | L18.0  | <ul style="list-style-type: none"> <li>30K - 3000K Color Temp</li> <li>1986 LED Source Lumens</li> <li>110.3 LED Source Lumens Per Watt</li> </ul> |  |  |  |  |

| REPLACEMENT PART   | PART NO | NOTES |
|--------------------|---------|-------|
| White Acrylic Lens | 3040960 |       |

Don't see the configuration you are looking for?  
Call us today at (513) 858-6004



TERONLIGHTING.COM  
 33 DONALD DR, FAIRFIELD, OH 45014  
 P: 513.858.6004 F: 513.858.6038  
 E: SALES@TERONLIGHT.COM



We reserve the right to revise the design components of any product due to parts availability or change in UL standards, without assuming any obligation or liability to modify any products previously manufactured, and without notice.