

# STADLER M LED

Architectural Outdoor



PROJECT:	
TYPE:	
PO#:	QTY:
COMMENTS:	

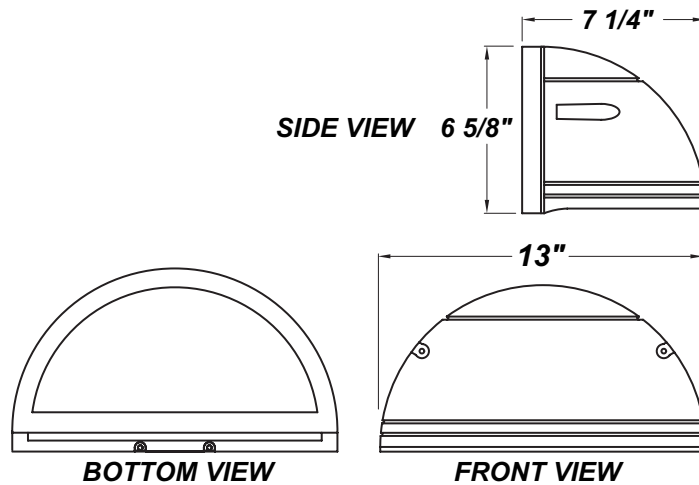
## FEATURES

- 120V - 277V
- Aluminum Heat-Sink Plate
- Clear Tempered Glass Diffuser
- CSA Approved Wet Location For Wall Mounting
- Dark Sky Compliant
- Die-Cast Aluminum Housing w/ Textured Bronze Polyester Powder Coat Finish
- LED Light Fixture
- Mounts Over 4" Junction Box w/ Easy-hang Wall Mounting Plate (Included)
- Surge Protector
- Thermal Compensation Technology Ensures Longer LED Lifetime, Which is Ideal For Fixtures Being Placed in Area w/ Fluctuating or Higher Ambient Temperatures



## LINE DRAWING

LINE DRAWING NOT TO SCALE

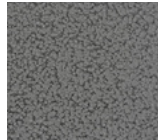


## FINISHES

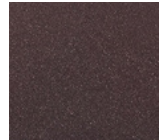
Antique Copper



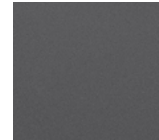
Antique Silver



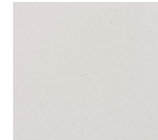
Bronze Mist



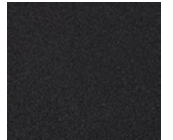
Matte Silver



Sand



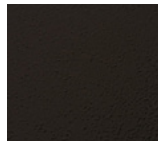
Swedish Steel



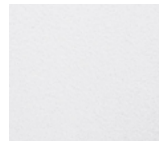
Textured Black



Textured Bronze



Textured White



For RAL Colors & Custom Match - Contact Teron Lighting Inc.

# STADLER M LED

Architectural Outdoor



Fixture Core

PROJECT:	
TYPE:	
PO#:	QTY:
COMMENTS:	

PRODUCT CODE	SOURCE/WATTAGE	VOLTAGE	DIMMING DRIVER
SDM - Stadler M	<b>L12.0-LT350</b> - 12.0W @ 350mA Triac and ELV Dimming Driver <b>L18.4-12VDC</b> - 18.4W @ 12V Direct Current Driver	<b>120V</b> <b>277V</b>	Not Applicable
ORDER INFO			
SDM	L12.0-LT350	120V	Not Applicable

Example ^ (may not represent a manufacturable product)

Aesthetics & Options

TRIM	FINISH	COLOR TEMP	OPTIONS
Not Applicable	<b>AC</b> - Antique Copper <b>AS</b> - Antique Silver <b>BT</b> - Bronze Mist <b>SM</b> - Matte Silver <b>SN</b> - Sand <b>SW</b> - Swedish Steel <b>TB</b> - Textured Black	<b>BZ</b> - Textured Bronze (Standard) <b>TW</b> - Textured White	<b>30K</b> - 3000K Color Temp <b>40K</b> - 4000K Color Temp <b>50K</b> - 5000K Color Temp <b>CGL</b> - Clear Glass Lens (Standard) <b>TP</b> - Tamper Resistant Screws <b>F</b> - Fused
ORDER INFO			
Not Applicable	AC	30K	CGL

Example ^ (may not represent a manufacturable product)

PROD	SOURCE	30K SPECS			
SDM	L12.0	<ul style="list-style-type: none"> <li>80 CRI typ.</li> <li>30K - 3000K Color Temp</li> <li>1740 LED Source Lumens</li> <li>145 LED Source Lumens Per Watt</li> </ul>			
	L18.4	<ul style="list-style-type: none"> <li>80 CRI typ.</li> <li>9 LED's Per ThermAdjust Module</li> <li>30K - 3000K Color Temp</li> <li>1896 LED Source Lumens</li> <li>103 LED Source Lumens Per Watt</li> </ul>			

REPLACEMENT PART	PART NO	NOTES
Clear Glass Diffuser	37068	

Don't see the configuration you are looking for?  
Call us today at (513) 858-6004



TERONLIGHTING.COM  
 33 DONALD DR, FAIRFIELD, OH 45014  
 P: 513.858.6004 F: 513.858.6038  
 E: SALES@TERONLIGHT.COM



We reserve the right to revise the design components of any product due to parts availability or change in UL standards, without assuming any obligation or liability to modify any products previously manufactured, and without notice.