

# DUNLOP LED 48"

Architectural Indoor



PROJECT:	
TYPE:	
PO#:	QTY:
COMMENTS:	

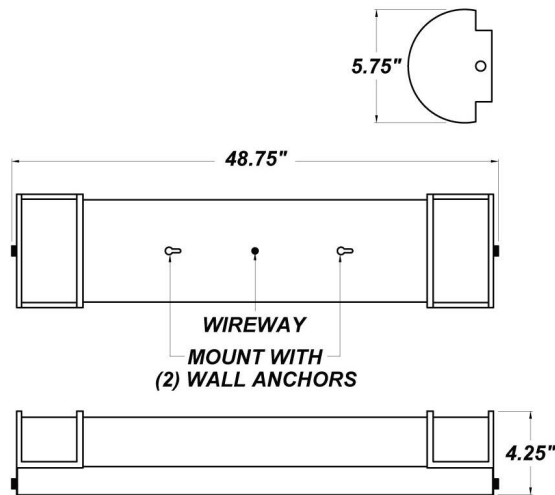
## FEATURES

- Aluminum Housing w/ Hi-Reflectance White Powder Coat Finish
- Aluminum LED Mount Plate
- CSA Listed Damp Location For Surface Mount
- Die-Formed Cold-Rolled Steel End Caps w/ Brushed Nickel Plated Finish
- Emergency Battery Available
- LED Light Fixture
- Luminous White Acrylic Diffuser
- Mounts Directly to Surface w/ Two Wall Anchors (Not Included)
- Vandal Resistant



## LINE DRAWING

LINE DRAWING NOT TO SCALE

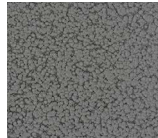


## FINISHES

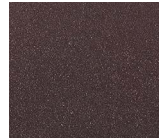
Antique Copper



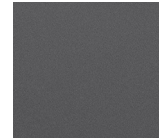
Antique Silver



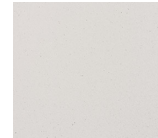
Bronze Mist



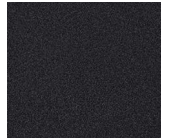
Matte Silver



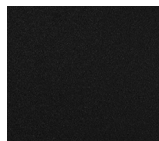
Sand



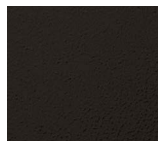
Swedish Steel



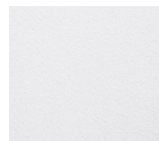
Textured Black



Textured Bronze



Textured White



For RAL Colors & Custom Match - Contact Teron Lighting Inc.

# DUNLOP LED 48"

Architectural Indoor



Fixture Core

PROJECT:	
TYPE:	
PO#:	QTY:
COMMENTS:	

PRODUCT CODE	SOURCE/WATTAGE	VOLTAGE	DIMMING DRIVER
DP48 - Dunlop 48"	<b>L24.0-LT700</b> - 24.0W @ 700mA ELV Dimming Driver <b>L36.0-LT1000</b> - 36W @ 1000mA ELV Dimming Driver <b>L36-ZE1000</b> - 36W @ 1000mA 0-10V Dimming Driver <b>L41.2-ZE1200</b> - 41.2W @ 1200mA 0-10V Dimming Driver	<b>120-277V</b>	<b>LT Drivers</b> are dimmable @120V <b>ZE Drivers</b> are dimmable 120-277V
ORDER INFO			
DP48 Example ^	L24.0-TE350	120-277V	Not Applicable

Aesthetics & Options

TRIM	FINISH	COLOR TEMP	OPTIONS
<b>Not Applicable</b>	<b>AC</b> - Antique Copper <b>AS</b> - Antique Silver <b>BT</b> - Bronze Mist <b>BN</b> - Brushed Nickel Plate (Standard) <b>SM</b> - Matte Silver <b>SN</b> - Sand <b>SW</b> - Swedish Steel <b>TB</b> - Textured Black <b>BZ</b> - Textured Bronze <b>TW</b> - Textured White	<b>30K</b> - 3000K Color Temp <b>35K</b> - 3500K Color Temp <b>40K</b> - 4000K Color Temp	<b>EB5</b> - 5W Intergral EM Battery <b>F</b> - Fused <b>TP</b> - Tamper Resistant
ORDER INFO			
Not Applicable Example ^	BN	30K	EB5

PROD	SOURCE	30K SPECS				
DP48	L24.0	<ul style="list-style-type: none"> <li>30K - 3000K Color Temp</li> <li>2601 LED Source Lumens</li> <li>108 LED Source Lumens Per Watt</li> </ul>				
	L36.0	<ul style="list-style-type: none"> <li>30K - 3000K Color Temp</li> <li>3540 LED Source Lumens</li> <li>98.3 LED Source Lumens Per Watt</li> </ul>				
	L41.2	<ul style="list-style-type: none"> <li>30K - 3000K Color Temp</li> <li>4119 LED Source Lumens</li> <li>99.9 LED Source Lumens Per Watt</li> </ul>				

REPLACEMENT PART	PART NO	NOTES
48" White Acrylic LED Lens Assembly	38202	
		Don't see the configuration you are looking for? Call us today at (513) 858-6004



**TERONLIGHTING.COM**  
 33 DONALD DR, FAIRFIELD, OH 45014  
 P: 513.858.6004 F: 513.858.6038  
 E: SALES@TERONLIGHT.COM



We reserve the right to revise the design components of any product due to parts availability or change in UL standards, without assuming any obligation or liability to modify any products previously manufactured, and without notice.