

DUNLOP LED 36"

Architectural Indoor



PROJECT:	
TYPE:	
PO#:	QTY:
COMMENTS:	

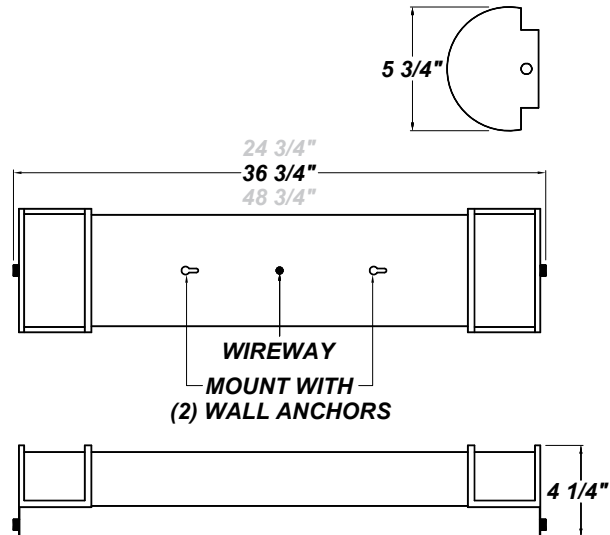
FEATURES

- Die-Formed Cold-Rolled Steel End Caps w/ Brushed Nickel Plated Finish
- Steel Housing w/ Hi-Reflectance White Powder Coat Finish
- Luminous White Acrylic Diffuser
- Aluminum LED Mount Plate
- Mounts Directly to Surface w/ Two Wall Anchors (Not Included)
- CSA Listed Damp Location For Surface Mount
- Emergency Battery Available
- LED Light Fixture
- Vandal Resistant



LINE DRAWING

LINE DRAWING NOT TO SCALE

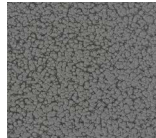


FINISHES

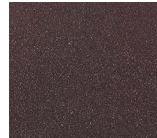
Antique Copper



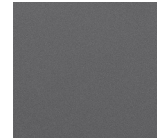
Antique Silver



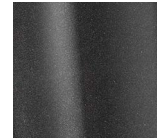
Bronze Mist



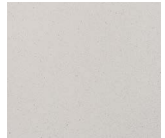
Matte Silver



Metallic Black



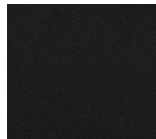
Sand



Swedish Steel



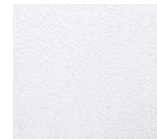
Textured Black



Textured Bronze



Textured White



For RAL Colors & Custom Match - Contact Teron Lighting Inc.

DUNLOP LED 36"

Architectural Indoor



Fixture Core

PROJECT:	
TYPE:	
PO#:	QTY:
COMMENTS:	

PRODUCT CODE	SOURCE/WATTAGE	VOLTAGE	DIMMING DRIVER
DP36 - Dunlop 36"	L23.2-TE700 - 23.2W @ 700mA ELV Dimming Driver L23.2-ZE700 - 23.2W @ 700mA 0-10V Dimming Driver L30.0-TE875 - 30W @ 875mA ELV Dimming Driver L30.0-ZE875 - 30W @ 875mA 0-10V Dimming Driver	120V 277V (120-230V Dimmable)	Not Applicable
ORDER INFO			
DP36 Example ^	L23.2-TE700	120V	Not Applicable

Aesthetics & Options

TRIM	FINISH	COLOR TEMP	OPTIONS
Not Applicable	AC - Antique Copper AS - Antique Silver BT - Bronze Mist BN - Brushed Nickel Plate (Standard) MB - Metallic Black SM - Matte Silver SN - Sand SW - Swedish Steel TB - Textured Black BZ - Textured Bronze TW - Textured White	30K - 3000K Color Temp 35K - 3500K Color Temp 40K - 4000K Color Temp	EB - 5.1W Intergral EM Battery F - Fused TP - Tamper Resistant
ORDER INFO			
Not Applicable Example ^	AC	30K	EB

PROD	SOURCE	30K SPECS			
DP 36"	L23.2	<ul style="list-style-type: none"> 30K - 3000K Color Temp 3258 LED Source Lumens 114.7 LED Source Lumens Per Watt 			
	L30.0	<ul style="list-style-type: none"> 30K - 3000K Color Temp 4072 LED Source Lumens 110.1 LED Source Lumens Per Watt 			

REPLACEMENT PART	PART NO	NOTES
36" White Acrylic LED Lens Assembly	38219	
		Don't see the configuration you are looking for? Call us today at (513) 858-6004



TERONLIGHTING.COM
 33 DONALD DR, FAIRFIELD, OH 45014
 P: 513.858.6004 F: 513.858.6038
 E: SALES@TERONLIGHT.COM



We reserve the right to revise the design components of any product due to parts availability or change in UL standards, without assuming any obligation or liability to modify any products previously manufactured, and without notice.