

# DUNLOP LED 24"

Architectural Indoor



PROJECT:	
TYPE:	
PO#:	QTY:
COMMENTS:	

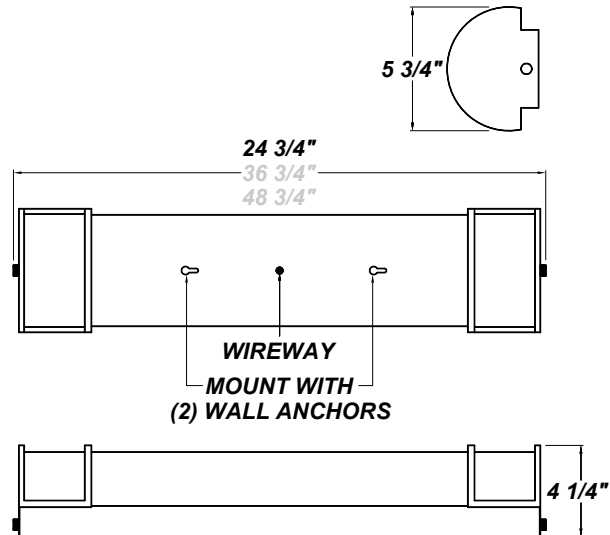
## FEATURES

- Die-Formed Cold-Rolled Steel End Caps w/ Brushed Nickel Plated Finish
- Steel Housing w/ Hi-Reflectance White Powder Coat Finish
- Luminous White Acrylic Diffuser
- Aluminum LED Mount Plate
- Mounts Directly to Surface w/ Two Wall Anchors (Not Included)
- CSA Listed Damp Location For Surface Mount
- Emergency Battery Available
- LED Light Fixture
- Vandal Resistant



## LINE DRAWING

LINE DRAWING NOT TO SCALE

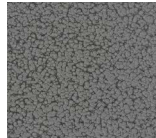


## FINISHES

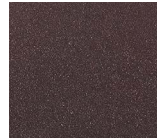
Antique Copper



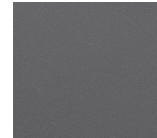
Antique Silver



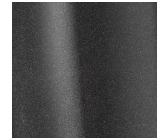
Bronze Mist



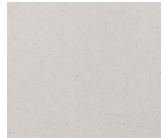
Matte Silver



Metallic Black



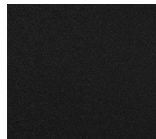
Sand



Swedish Steel



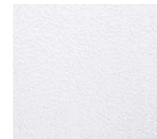
Textured Black



Textured Bronze



Textured White



For RAL Colors & Custom Match - Contact Teron Lighting Inc.

# DUNLOP LED 24"

Architectural Indoor



Fixture Core

PROJECT:	
TYPE:	
PO#:	QTY:
COMMENTS:	

PRODUCT CODE	SOURCE/WATTAGE	VOLTAGE	DIMMING DRIVER
DP24 - Dunlop 24"	<b>L12.0-TE350</b> - 12W @ 350mA ELV Dimming Driver <b>L18.0-TE500</b> - 18W @ 500mA ELV Dimming Driver <b>L18.0-ZE500</b> - 18W @ 500mA 0-10V Dimming Driver <b>L20.6-ZE600</b> - 20.6W @ 600mA 0-10V Dimming Driver	<b>120V</b> <b>277V</b> (120-230V Dimmable)	<b>Not Applicable</b>
ORDER INFO			
DP24 Example ^	L12.0-TE350	120V	Not Applicable

Aesthetics & Options

TRIM	FINISH	COLOR TEMP	OPTIONS
<b>Not Applicable</b>	<b>AC</b> - Antique Copper <b>AS</b> - Antique Silver <b>BT</b> - Bronze Mist <b>BN</b> - Brushed Nickel Plate (Standard) <b>MB</b> - Metallic Black <b>SM</b> - Matte Silver <b>SN</b> - Sand <b>SW</b> - Swedish Steel <b>TB</b> - Textured Black <b>BZ</b> - Textured Bronze <b>TW</b> - Textured White	<b>30K</b> - 3000K Color Temp <b>35K</b> - 3500K Color Temp <b>40K</b> - 4000K Color Temp	<b>EB</b> - 5.1W Intergral EM Battery <b>F</b> - Fused <b>TP</b> - Tamper Resistant
ORDER INFO			
Not Applicable Example ^	AC	30K	EB

PROD	SOURCE	30K SPECS				
DP 24"	L12.0	<ul style="list-style-type: none"> <li>30K - 3000K Color Temp</li> <li>1400 LED Source Lumens</li> <li>100 LED Source Lumens Per Watt</li> </ul>				
	L18.0	<ul style="list-style-type: none"> <li>30K - 3000K Color Temp</li> <li>1986 LED Source Lumens</li> <li>99 LED Source Lumens Per Watt</li> </ul>				
	L20.6	<ul style="list-style-type: none"> <li>30K - 3000K Color Temp</li> <li>2050 LED Source Lumens</li> <li>82 LED Source Lumens Per Watt</li> </ul>				

REPLACEMENT PART	PART NO	NOTES
24" White Acrylic LED Lens Assembly	38201	
		Don't see the configuration you are looking for? Call us today at (513) 858-6004



**TERONLIGHTING.COM**  
 33 DONALD DR, FAIRFIELD, OH 45014  
 P: 513.858.6004 F: 513.858.6038  
 E: SALES@TERONLIGHT.COM



We reserve the right to revise the design components of any product due to parts availability or change in UL standards, without assuming any obligation or liability to modify any products previously manufactured, and without notice.