

# ASHWORTH RNG

Architectural Outdoor



PROJECT:	
TYPE:	
PO#:	QTY:
COMMENTS:	

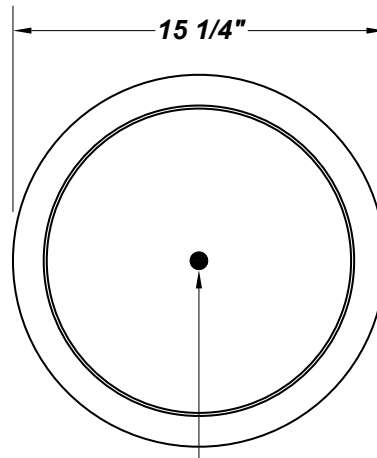


## FEATURES

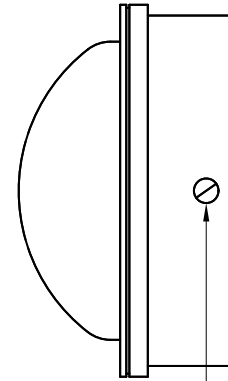
- 380 Grade Die-Cast Aluminum Housing w/ Textured Black Polyester Powder Coat Finish
- Die-Cast Aluminum Grill (Standard) w/ Textured Black Polyester Powder Coat Finish
- Clear Prismatic Ribbed Molded Borosilicate Glass Lens
- Fully Silicone Gasketed Channel
- Stainless Steel Zinc Coated Screws
- Cast-In Template
- Mounts Direct to Flat Surface w/Four #8 Wall Anchors (Not Included)
- CSA Listed Wet Location For Wall or Ceiling Mount
- Emergency Battery Available
- Lamps Included
- Vandal Resistant

## LINE DRAWING

LINE DRAWING NOT TO SCALE



**REAR  
CONDUIT ENTRY**



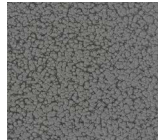
**CONDUIT ENTRY  
4 PLACES 90° APART**

## FINISHES

Antique  
Copper



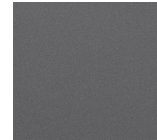
Antique  
Silver



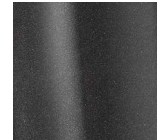
Bronze  
Mist



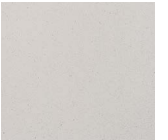
Matte  
Silver



Metallic  
Black



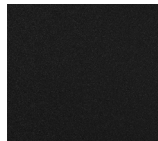
Sand



Swedish  
Steel



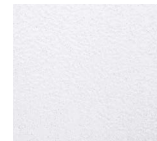
Textured  
Black



Textured  
Bronze



Textured  
White



For RAL Colors  
& Custom  
Match -  
Contact Teron  
Lighting Inc.

# ASHWORTH RNG

Architectural Outdoor



Fixture Core

PROJECT:	
TYPE:	
PO#:	QTY:
COMMENTS:	

PRODUCT CODE	SOURCE/WATTAGE	VOLTAGE	DIMMING BALLAST
AH - Ashworth	<b>218X</b> - (2) 18W TBX <b>226X</b> - (2) 26W TBX <b>232X</b> - (2) 32W TBX <b>242X</b> - (2) 42W TBX	<b>120V</b> <b>227V</b>	<b>Not Applicable</b>
ORDER INFO			
AH	218X	120V	Not Applicable

Example ^ (may not represent a manufacturable product)

Aesthetics & Options

TRIM	FINISH	COLOR TEMP	OPTIONS
RNG	<b>AC</b> - Antique Copper <b>AS</b> - Antique Silver <b>BT</b> - Bronze Mist <b>SM</b> - Matte Silver <b>MB</b> - Metallic Black <b>SN</b> - Sand <b>SW</b> - Swedish Steel <b>TB</b> - Textured Black (Standard) <b>BZ</b> - Textured Bronze <b>TW</b> - Textured White	<b>Not Applicable</b>	<b>DIM</b> - Dimming Ballast <b>EBC</b> - Integral EM Battery (-20°C) <b>EBR</b> - Remote Mount Battery (Field Installed) <b>EBW</b> - Integral EM Battery <b>F</b> - Fused <b>PCL</b> - Photocell <b>TP</b> - Tamper Resistant Screws <b>W2L</b> - Wire 2 Lamps to Integral Emergency Battery (EBW Only) (2x18W Only)
ORDER INFO			
RNG	AC	Not Applicable	DIM

Example ^ (may not represent a manufacturable product)

REPLACEMENT PART	PART NO	NOTES
Clear Prismatic Glass Lens	37042	
RND Fascia (Specify Finish)	5510999	

Don't see the configuration you are looking for?  
Call us today at (513) 858-6004



**TERONLIGHTING.COM**  
 33 DONALD DR, FAIRFIELD, OH 45014  
 P: 513.858.6004 F: 513.858.6038  
 E: SALES@TERONLIGHT.COM



We reserve the right to revise the design components of any product due to parts availability or change in UL standards, without assuming any obligation or liability to modify any products previously manufactured, and without notice.