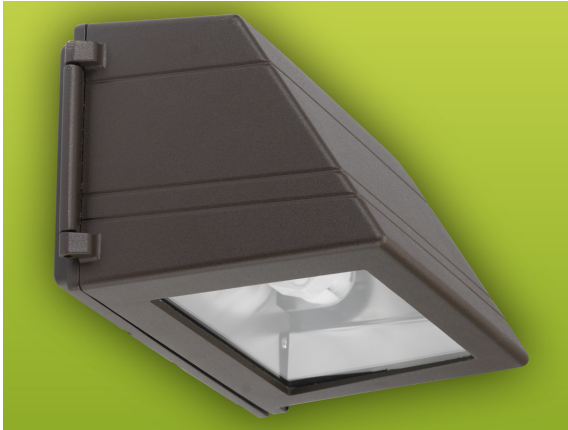


PROJECT :
TYPE :
ORDERING # :
COMMENTS :

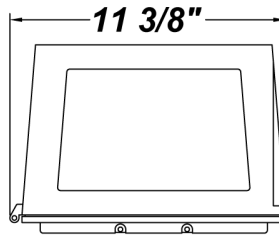
CADDY M LED



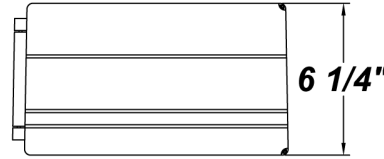
FEATURES

- Die-Cast Aluminum Housing w/ Textured Bronze Polyester Powder Coat Finish
- Clear Tempered Glass Lens
- Fully Gasketed
- Aluminum Heat-Sink Plate
- Mounts Direct to Flat Surface w/Three #8 Wall Anchors (Not Included)
- 100V - 277V
- Surge Protector
- CSA Approved Wet Location For Wall Mounting (Down Light Only)

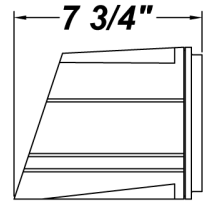
SOURCE/WATTAGE	30K SPECIFICATIONS
L18.4 - 18.4W LED Modules(s)	<p>Six (9) LED Strips 30K - 3000K Color Temp.</p> <ul style="list-style-type: none"> - 80 CRI typ. - 1896 Source Lumens - 103 Source Lumens Per Watt
L12.0 - 12.0W LED Strip(s)	<p>Two (11) LED Strips 30K - 3000K Color Temp.</p> <ul style="list-style-type: none"> - 80 CRI typ. - 1740 Source Lumens - 145 Source Lumens Per Watt



BOTTOM VIEW



FRONT VIEW



SIDE VIEW

ORDERING INFORMATION

Example : (CDM - L18.4 - 100-277V - CGL - BT - 40K)

Textured Bronze is Standard Finish

PRODUCT	SOURCE/WATTAGE	VOLTAGE	DRIVER	DIFFUSER	FINISH	OPTIONS / SPECS
Caddy M	<p>L18.4 - Six (9) LED Modules</p> <p>3.066W LED Modules - (LM80 Standard) **40,000 Hours(L70)</p> <p>L12.0 - Two (11) LED Strips</p> <p>(LM80 Standard) **40,000 Hours(L70)</p>	100 - 277V	<p>12VDC - 12V Direct Current (L18.4 Only)</p> <p>LT350 - 350mA Trailing & Leading Edge Driver (L12.0 Only)</p>	CGL - Clear Glass Lens (Standard)	<p>TB - Textured Black</p> <p>SM - Matte Silver</p> <p>AC - Antique Copper</p> <p>AS - Antique Silver</p> <p>BT - Bronze Mist</p> <p>CP - Copper</p> <p>SN - Sand</p> <p>SW - Swedish Steel</p> <p>BZ - Textured Bronze</p> <p>TW - Textured White</p> <p>RAL Colors or Custom Match - Consult Factory</p>	<p>30K - 3000K Color Temperature</p> <p>40K - 4000K Color Temperature</p> <p>50K - 5000K Color Temperature</p> <p>PCL120 - Photocell 120V</p> <p>PCL277 - Photocell 277V</p> <p>F - Fused</p> <p>MIV - 20 Watt Micro-Inverter (Remote)</p> <p>TP - Tamper-Proof Screw Set</p>

REPLACEMENT PARTS

PART NO.

Replacement Clear Tempered Glass Lens

37067

NOTES

We reserve the right to revise the design or components of any product due to parts availability or change in UL standards, without assuming any obligation or liability to modify any products previously manufactured, and without notice.

**Definition of 40,000 hours: Lifetime Rating is Based on Lamp Manufacturers' LM80 Test Results Which Utilized an Exponentially Decaying Model, a Standard Used by The Department of Energy, as Well as by Other Manufacturers.

