

## INSTALLATION & MAINTENANCE INSTRUCTIONS

DUNES	FAULTLESS	MACGREGOR
EAGLE	HORIZONS	MEDINAH
PGA	MYRTLE BEACH	TRADITIONS
ALLURE RD	ALLURE SQ	DALY
KEYSTONE C	MAXFLI	NIKE C 18"



**TLI**  
Teron Lighting, Inc.

Echelon  
COLLECTION

TERON  
SERIES

76004

## INSTALLATION

- 1] Remove any excess packing from the fixture.
- 2] If the lens is attached, loosen the screws (A) that hold the lens in place, and remove the lens. It is not necessary to completely remove the screws.
- 3] Insert 2 screws (provided) into the J-Box. Place the Mount Pan over the 2 screws via the Keyslots (B). Rotate the mount pan to secure it in the Keyslots, then tighten the screws to completely secure the pan to the J-Box / Mounting Surface.
- 4] Connect the fixture leads to the supply leads. TLI stipulates the Black as Line; White as Common; Bare/Green as Ground.
- 5] Install the lens by holding it in place while tightening the screws (A). Leave some space for the lens to move. The lens will expand slightly during operation due to the heat from the lamp(s) and ballast.
- 6] Check the re-lamp label to ensure that the lamp is the specified wattage. HID Lamps should be hand tight. For best operation, screw in the HID lamp, remove, & re-tighten. Fluorescent lamps will not snap into incorrect lampholders.

## MAINTENANCE

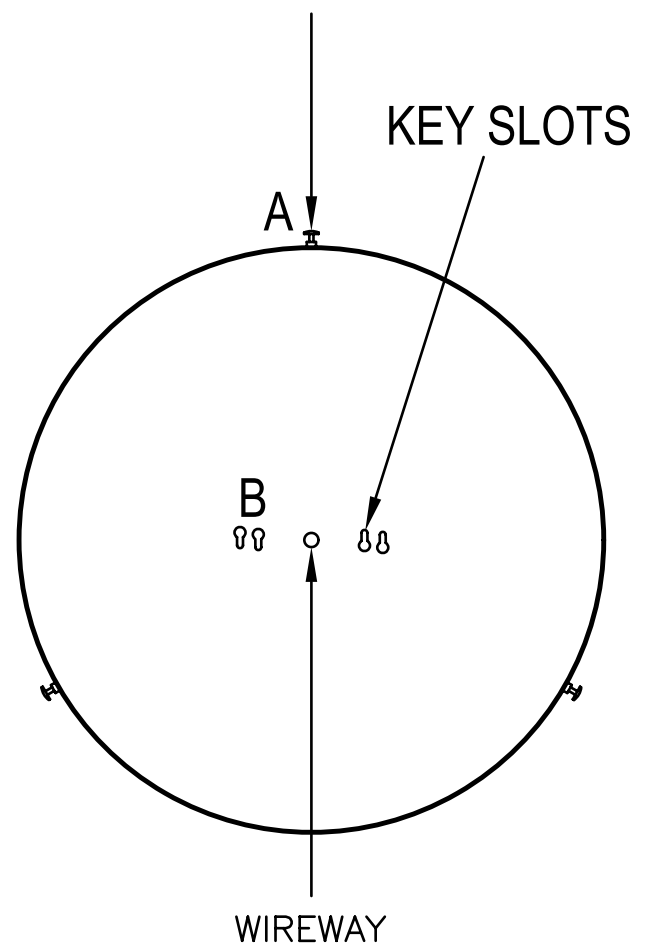
The lens should be cleaned once every 6 months. Repeat the above procedures in reverse to remove the lens. It must be washed in a mild soap solution. DO NOT use cleansers containing bleach. Re-assemble the fixture.

The metal portion of the fixture can be wiped clean as needed using a mild soap solution.

**ATTENTION:** Avoid moving any exposed wires. If any wires are accidentally disconnected, call a professional to repair.

**NOTE: THIS PRODUCT MUST BE INSTALLED IN ACCORDANCE WITH THE APPLICABLE INSTALLATION CODE BY A PERSON FAMILIAR WITH THE CONSTRUCTION AND OPERATION OF THE PRODUCT AND THE HAZARDS INVOLVED.**

## SCREWS SECURING LENS



These instructions are general to the fixtures noted.  
Due to the numerous options, all variations may not be covered.

Installation of an electrical luminaire must be performed by a qualified professional. The fixture must be wired in accordance to all local & national electrical codes.